



**Advanced
Career
Institute**

**2024
ANNUAL
SECURITY
REPORT**

Table of Contents

LOCATIONS	3
ANNUAL SECURITY REPORT	4
CAMPUS SECURITY AUTHORITIES.....	4
CRIME STATISTICS.....	5
PERSONAL SAFETY	5
REPORTING A CRIME.....	5
INVESTIGATIONS	6
DATING VIOLENCE, DOMESTIC VIOLENCE, SEXUAL ASSAULT AND STALKING POLICY, PROCEDURES, RIGHTS AND INFORMATION.....	7
POLICY	7
WRITTEN EXPLANATION OF RIGHTS	7
TERMS.....	7
BYSTANDER INTERVENTION.....	8
RISK REDUCTION	8
PROCEDURES TO FOLLOW AFTER AN ASSAULT.....	10
WHO TO REPORT THE OFFENSE TO.....	10
PROTECTIVE ORDERS, CRIMINAL/CIVIL PROSECUTION AND RIGHTS OF CRIME VICTIMS	10
PROTECTION OF CONFIDENTIALITY	12
ON AND OFF CAMPUS SERVICES	13
CHANGES IN ACADEMIC/WORK SITUATION.....	13
PROCEDURES FOR DISCIPLINARY PROCEEDINGS	13
STANDARDS OF EVIDENCE.....	14
SANCTIONS.....	14
PROTECTIVE MEASURES.....	14
APPEALS	14
WHERE AND HOW TO FILE A DISCIPLINARY COMPLAINT	15
REGISTERED SEX OFFENDERS.....	15
EMERGENCY NOTIFICATION.....	15
TIMELY WARNING	16
INFORMING THE LARGER COMMUNITY ON EMERGENCY NOTIFICATIONS:.....	17
EMERGENCY RESPONSE/EVACUATION PROCEDURES	17

DRUG/ALCOHOL ABUSE PREVENTION POLICY17

VISALIA CAMPUS CRIME STATISTICS.....27

VISALIA CAMPUS CLERY MAP (GEOGRAHY).....32

FRESNO CAMPUS CRIME STATISTICS33

FRESNO CAMPUS CLERY MAP (GEOGRAHY)38

NORTH AVE CRIME STATISTICS39

NORTH AVE CAMPUS CLERY MAP (GEOGRAHY).....44

MERCED CAMPUS CRIME STATISTICS.....45

MERCED CAMPUS CLERY MAP (GEOGRAHY).....50

BAKERSFIELD CAMPUS CRIME STATISTICS51

BAKERSFIELD CAMPUS CLERY MAP (GEOGRAHY).....56

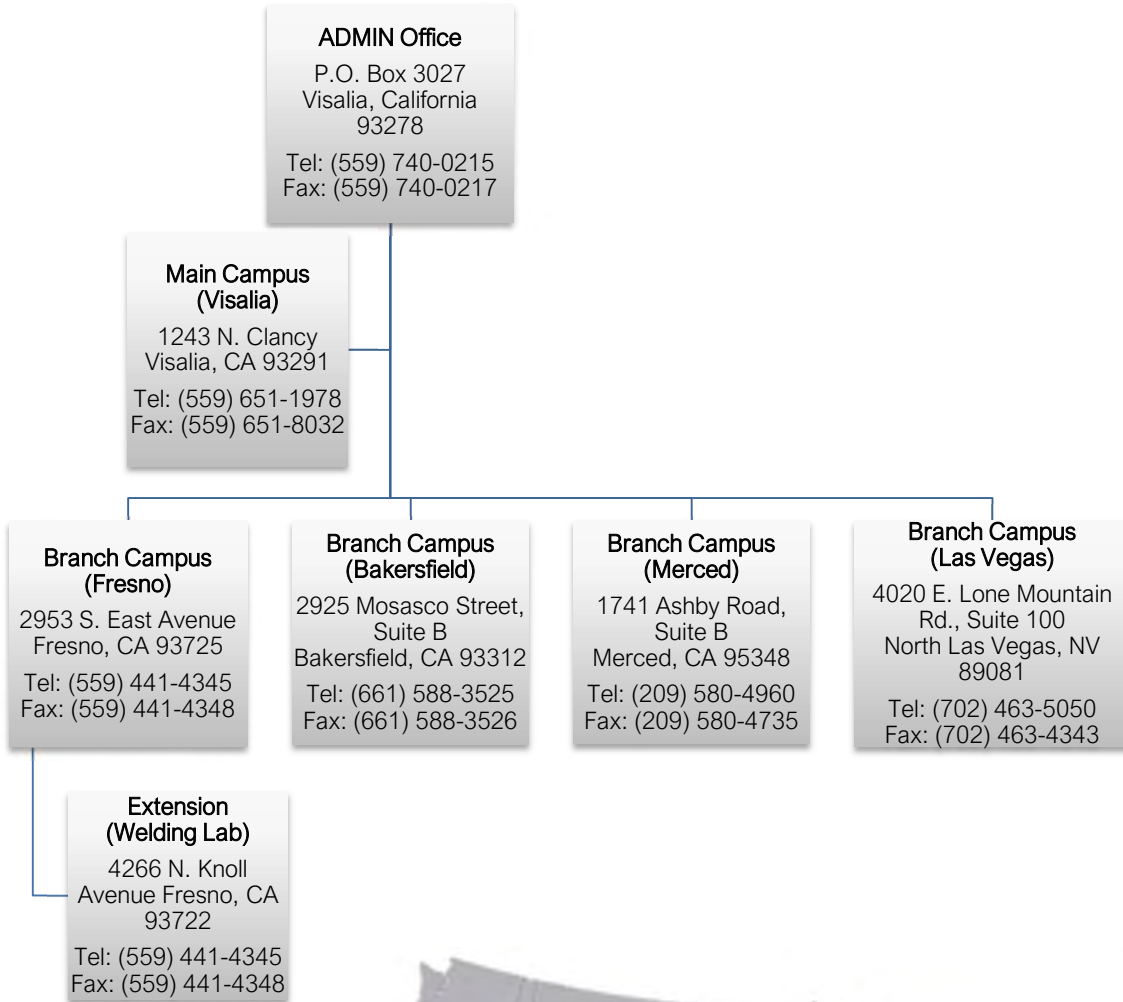
LAS VEGAS CAMPUS CRIME STATISTICS.....57

LAS VEGAS CAMPUS CLERY MAP (GEOGRAHY)62

DEFINITIONS.....63

RESIDENTIAL FACILITIES64

LOCATIONS



ANNUAL SECURITY REPORT

The Executive Office of Advanced Career Institute is responsible for campus security. The personnel of this department are empowered to enforce Advanced Career Institute's regulations and to investigate incidents on campus. All criminal incidents, accidents, and other emergencies are reported to the local authorities. When necessary, Advanced Career Institute will press charges against the criminal violators.

The school prepares this report to comply with the Jeanne Clery Disclosure of Campus Security Policy and Crime Statistics Act (Clery Act). This report is prepared in cooperation with local law enforcement agencies. Nothing in the law shall be construed to permit a school to retaliate, intimidate, threaten, coerce, or otherwise discriminate against any individual with respect to the implementation of the Clery Act.

Our school attempts to provide students and employees with a safe and secure environment in which to study and work. The school is open during posted hours. Access to campus facilities is generally limited to students, employees and approved guests during regularly scheduled business hours and class times. Employees should verify that the front office is notified of all anticipated visitors. Visitors should be instructed to report to the front office where they will sign in on the Visitor's Log. School facilities are secured during times the school is not open.

CAMPUS SECURITY AUTHORITIES

Advanced Career Institute's commitment to campus safety is guided by the contents of the Jeanne Clery Disclosure of Campus Security Policy and Crime Statistics Act.

Each location has a person responsible for overseeing campus security staff, ensuring the collection of crime reports, and providing timely warning to the campus community:

David Bither, EVP, Administrative Office
(559) 740-0215 ext. 101

Alexandra Rios, FAO, Administrative Office
(559-740-0215 ext. 102

Larry Helmuth, Campus Director, Visalia Campus
(559) 651-1978

Everett Yockey, Campus Director, Fresno Campus
(559) 441-4345

Everett Yockey, Campus Director, Merced Campus
(209) 580-4960

Everett Yockey, Campus Director, Bakersfield Campus
(661) 588-3525

Everett Yockey, Campus Director, Las Vegas Campus
(702) 463-5050

Advanced Career Institute's Annual Security Report is published and posted online at www.Advanced.edu under Consumer Information, Annual Security Report and all current students and employees are notified of its availability in writing. This report includes statistical data on the

incidence of crime over the past three years. This data is collected, and reported to the Department of Education. Prospective employees and students are informed in writing that the report is available at www.Advanced.edu under Consumer Information, Annual Security Report and is provided to them if requested.

CRIME STATISTICS

The crime statistics included in the Annual Security Report are based on incident reports and data collected from the local law enforcement agencies in whose jurisdiction campuses are located, if made available. These statistics include crimes committed on campus, off campus or on the public property that is immediately adjacent to, and accessible from, the campus. These statistics include those reported to a Campus Safety Officer, employee, city police, or county sheriff's department.

PERSONAL SAFETY

While the school attempts to provide a safe and secure environment, students, faculty, staff and campus visitors are ultimately responsible for their safety. Safety is enhanced when students and employees take precautions such as:

- Report all suspicious activity to Campus Security Authorities (CSA) immediately.
- Never take personal safety for granted.
- Avoid walking alone at night. Travel with a friend or companion.
- Avoid parking or walking in secluded or dimly lit areas.
- Limit your alcohol consumption, and leave social functions that get too loud, too crowded, or that have too many people drinking excessively.
- Carry only small amounts of cash.
- Never leave valuables (wallets, purses, books, computers, etc.) unattended.
- Carry your keys with you at all times and don't lend them to anyone.
- Lock your car doors and close the windows when leaving your car.
- Never leave valuables in your car especially if they are easily noticeable.
- Inventory your personal property and make records of the serial numbers of all items of value.
- Never admit anyone without a valid ID badge on campus/school premises.

As the school becomes aware of relevant programs that address responsible practices and procedures that enhance personal safety, when obtained such information will be made available in the Media Center.

REPORTING A CRIME

If a student or employee is aware that a crime has been, or is being, committed on school property or at a school sponsored or recognized event off-campus during the hours that the school is open, the crime should be reported as soon as possible to the Campus Director's Office or any CSA. The Campus Director's Office is located in the front office at each campus. Other emergencies should also be reported to the Campus Director's Office. If the crime has been committed when the school is closed, it should be reported to the Campus Director's Office as soon as possible after school is open. In addition to reporting the crime to the Campus Director's Office, the crime should be reported to local law enforcement authorities. The local Fresno Police Department may be reached at (559) 621-7000, Visalia Police Department at (559) 734-8116, Merced Police Department at (209) 385-8880, Bakersfield Police Department at (661) 327-7111 or Las Vegas Metropolitan Police

Department at (702) 828-3111. In an emergency, the local Police Department may be contacted by dialing 911.

The Front Office at each campus has authority to determine whether individuals have lawful business at the school and may request identification to make that determination. In addition, they have the authority to ensure that school policies, such as break time and building access, are followed. The school works with local law enforcement agencies and refers criminal incidents to the local police department having jurisdiction over such matters.

The Campus Director will work with local law enforcement, as appropriate, when a crime is reported. Crimes reported to the Campus Director's Office are included in the annual campus crime statistics. In addition, the school requests from the local Police Department crime information not reported to the school Campus Director's Office that is appropriate for inclusion in the annual campus crime statistics. Further, if circumstances warrant, the school community will be notified if an on-going threat is posed related to a reported crime.

If you are the victim of a crime and do not want to pursue action through the school or the criminal justice system, you may still consider making a confidential report. The purpose of a confidential report is to comply with your wish to keep the matter confidential, while taking steps to ensure the future safety of yourself and others. Reports filed in this manner are included in the annual crime statistics for the school.

The school does not tolerate violence or other threatening conduct against any members of the school community. This includes criminal acts against persons or property, as well as harassment based on sex, race, ethnicity, or disability. The school will impose strict disciplinary actions and appropriately involve law enforcement officials should any acts of violence or threatening conduct occur on school facilities or at school-sponsored events. This includes acts of violence against women.

In addition to any criminal sanctions, the school will impose appropriate disciplinary sanctions if the offender is a student or employee of the school. The school Campus Director's Office should be contacted should one wish to file a complaint. Also, note that, in cases of sexual assault complaints:

- ❖ both the accuser and the accused are entitled to the same opportunities to have others present during the disciplinary hearing and
- ❖ both the accuser and the accused shall be informed of the outcome of any disciplinary proceeding based on an allegation of sexual assault.

The school will work with the victim, should it be requested, in making such changes as can reasonably be accommodated relative to the student's academic and living situations.

INVESTIGATIONS

In the event that a student or employee is accused or suspected of committing a crime on campus, or while participating in an institution sponsored activity, the institution will cooperate in full with the appropriate law enforcement agency. It may be necessary to suspend the employee or student during the course of an investigation. The institution will impose the appropriate sanction, up to and including termination, if the accused is found guilty.

DATING VIOLENCE, DOMESTIC VIOLENCE, SEXUAL ASSAULT AND STALKING POLICY, PROCEDURES, RIGHTS AND INFORMATION

POLICY

Advanced Career Institution prohibits the crimes of dating violence, domestic violence, sexual assault and stalking. These crimes are a violation of institutional policies and regulations, and are subject to all applicable punishment, including criminal procedures and employee or student discipline procedures.

WRITTEN EXPLANATION OF RIGHTS

When a student or employee reports to the institution that the student or employee has been a victim of domestic violence, dating violence, sexual assault, or stalking, whether the offense occurred on or off campus, the institution will provide the student or employee a written explanation of the student's or employee's rights and options as described below.

TERMS

Sexual Assault: Means any non-consensual sexual act, including those acts when the victim lacks capacity to consent.

Consent (in reference to sexual activity): In California, consent means “affirmative consent.” Affirmative consent means affirmative, conscious and voluntary agreement to engage in sexual activity. It is the responsibility of each person involved in the sexual activity to ensure that he or she has the affirmative consent of the other, or others, to engage in the sexual activity.

Domestic Violence: Any person who willfully inflicts corporal injury resulting in a traumatic condition upon a victim who is or was one or more of the following: the offender's spouse or former spouse, the offender's cohabitant or former cohabitant, the offender's fiancé or fiancée, or someone with whom the offender has, or previously had, an engagement or dating relationship, the mother or father of the offender's child.

Dating Violence: When a battery is committed against a spouse, a person with whom the defendant is cohabiting, a person who is the parent of the defendant's child, former spouse, fiancé or fiancée, or a person with whom the defendant currently has, or has previously had, a dating or engagement relationship.

Stalking: Any person who willfully, maliciously, and repeatedly follows or willfully and maliciously harasses another person and who makes a credible threat with the intent to place that person in reasonable fear for his or her safety, or the safety of his or her immediate family is guilty of the crime of stalking.

BYSTANDER INTERVENTION

Bystander intervention means safe and positive options that may be carried out by an individual or individuals to prevent harm or intervene when there is a risk of dating violence, domestic violence, sexual assault, or stalking. Bystander intervention includes recognizing situations of potential harm, understanding institutional structures and cultural conditions that facilitate violence, overcoming barriers to intervening, identifying safe and effective intervention options, and taking action to intervene.

All members of the community are expected to take reasonable action to prevent or stop any act of sexual violence, harassment, or any violation of institutional policies. The institution prohibits any retaliation, coercion, threats, or discrimination against any individual who intervenes, reports, or provides information on sexual or relationship violence.

Safe and Positive Options for Bystander Intervention:

- Bystanders can engage in safe and positive actions to prevent harm or intervene when there is a risk of dating violence, sexual assault, or stalking.
- Possible actions include recognizing situations of potential harm, raising awareness for conditions that lead to violence and abuse, overcoming barriers for victims and bystanders and identifying safe and effective intervention options.
- If someone discloses a sexual assault, abusive relationship, or experience with stalking to you, you can start by believing them.
- If you see someone on or off campus who looks like they are in trouble, ask if they are okay. If you are afraid to interfere with the situation, call that person over for something very general (“Can I speak to you about the homework from the other day?”).
- If you see a colleague, student, or friend doing something harmful, speak up. If someone says something offensive, derogatory, or abusive, let them know that the behavior is wrong and you don’t want to be around it. Don’t laugh at sexist, racist, or homophobic jokes.
- Be respectful of yourself and others. Before initiating any sexual act with your partner, make sure you obtain their consent.
- Before intervening, always make sure you can do so safely.

RISK REDUCTION

With no intent to victim blame and recognizing that only rapists are responsible for rape, the following are some strategies to reduce one’s risk of sexual assault or harassment (taken from Rape, Abuse, & Incest National Network, www.rainn.org)

- Be aware of your surroundings. Knowing where you are and who is around you may help you to find a way to get out of a bad situation.
- Try to avoid isolated areas. It is more difficult to get help if no one is around.
- Walk with purpose. Even if you don’t know where you are going, act like you do.
- Trust your instincts. If a situation or location feels unsafe or uncomfortable, it probably isn’t the best place to be.
- Try not to load yourself down with packages or bags as this can make you appear more vulnerable.
- Make sure your cell phone is with you and charged and that you have cash money.
- Don’t allow yourself to be isolated with someone you don’t trust or someone you don’t know.
- Avoid putting music headphones in both ears so that you can be more aware of your surroundings, especially if you are walking alone.

- When you go to a social gathering, go with a group of friends. Arrive together, check in with each other throughout the evening, and leave together. Knowing where you are and who is around you may help you to find a way out of a bad situation.
- Trust your instincts. If you feel unsafe in any situation, go with your gut. If you see something suspicious, contact law enforcement immediately (local authorities can be reached by calling 9-1-1 in most areas of the U.S.).
- Don't leave your drink unattended while talking, dancing, using the restroom, or making a phone call. If you've left your drink alone, just get a new one.
- Don't accept drinks from people you don't know or trust. If you choose to accept a drink, go with the person to the bar to order it, watch it being poured, and carry it yourself. At parties, don't drink from the punch bowls or other large, common open containers.
- Watch out for your friends, and vice versa. If a friend seems out of it, is way too intoxicated for the amount of alcohol they've had, or is acting out of character, get him or her to a safe place immediately.
- If you suspect you or a friend has been drugged, contact law enforcement immediately (local authorities can be reached by calling 9-1-1 in most areas of the U.S.). Be explicit with doctors so they can give you the correct tests (you will need a urine test and possibly others).
- If you need to get out of an uncomfortable or scary situation here are some things that you can try:

Remember that being in this situation is not your fault. You did not do anything wrong, it is the person who is making you uncomfortable that is to blame.

Be true to yourself. Don't feel obligated to do anything you don't want to do. "I don't want to" is always a good enough reason. Do what feels right to you and what you are comfortable with.

Have a code word with your friends or family so that if you don't feel comfortable you can call them and communicate your discomfort without the person you are with knowing. Your friends or family can then come to get you or make up an excuse for you to leave.

- Lie. If you don't want to hurt the person's feelings it is better to lie and make up a reason to leave than to stay and be uncomfortable, scared, or worse. Some excuses you could use are: needing to take care of a friend or family member, not feeling well, having somewhere else that you need to be, etc.
- Try to think of an escape route. How would you try to get out of the room? Where are the doors? Windows? Are there people around who might be able to help you? Is there an emergency phone nearby?
- If you and/or the other person have been drinking, you can say that you would rather wait until you both have your full judgment before doing anything you may regret later.

PROCEDURES TO FOLLOW AFTER AN ASSAULT

- Get to a place of safety.
- Obtain necessary medical treatment.
- Time is a critical factor for the preservation of evidence that may be helpful for proving the criminal offense occurred or may be helpful in obtaining a protection.
- Do not wash your hands, bathe yourself, use the restroom, brush your teeth, or drink anything until a medical exam can be provided and evidence collected.
- Remain in the clothing worn during the assault or put the clothing in a paper bag (not plastic) so that it can be entered into evidence.
- Do not clean or straighten up the area where the assault occurred.
- Note the names/descriptions of other people who may have witnessed, been present in the area or have knowledge of the assault.

WHO TO REPORT THE OFFENSE TO

These crimes should be reported as soon as possible to the Campus Director's Office or any CSA. The Campus Director's Office is located in the front office at each campus. If the crime has been committed when the school is closed, it should be reported to the Campus Director's Office as soon as possible after school is open.

In addition to reporting the crime to the Campus Director's Office, the crime should be reported to local law enforcement authorities. The local Fresno Police Department may be reached at (559) 621-7000, Visalia Police Department at (559) 734-8116, Merced Police Department at (209) 385-8880, Bakersfield Police Department at (661) 327-7111 or Las Vegas Metropolitan Police Department at (702) 828-3111.

In an emergency, the local Police Department may be contacted by dialing 911. If the victim requests, institutional personnel will assist a victim by notifying the appropriate law enforcement authorities. Filing a police report will not obligate the victim to prosecute. A victim also has the option to decline to notify such authorities.

PROTECTIVE ORDERS, CRIMINAL/CIVIL PROSECUTION AND RIGHTS OF CRIME VICTIMS

Advanced Career Institute complies with California law in recognizing orders of protection, called "restraining orders," and requests that any person who obtains an order of protection from the State of California or any U.S. state provide a copy to Advanced Career Institute. A restraining order (also called a "protective order") is a court order that can protect someone from being physically or sexually abused, threatened, stalked, or harassed. The person obtaining the restraining order is called the "protected person." The person the restraining order is against is the "restrained person." Sometimes, restraining orders include other "protected persons" like family or household members of the protected person.

What does a restraining order do?

In general restraining orders can include:

1. Personal Conduct Orders

These are orders to stop specific acts against everyone named in the restraining order as a “protected person.” Some of the things that the restrained person can be ordered to stop are:

- Contacting, calling, or sending any messages (including e-mail);
- Attacking, striking, or battering;
- Stalking;
- Threatening;
- Sexually assaulting;
- Harassing;
- Destroying personal property; or
- Disturbing the peace of the protected people.

2. Stay-away orders

These are orders to keep the restrained person a certain distance away (like 50 or 100 yards) from:

- The protected person or persons;
- Where the protected person lives;
- His or her place of work;
- His or her children’s schools or places of child care;
- His or her vehicle;
- Other important places where he or she goes.

3. Residence exclusion (“kick-out” or “move-out”) orders

These are orders telling the restrained person to move out from where the protected person lives and to take only clothing and personal belongings until the court hearing. These orders can only be asked for in domestic violence or elder or dependent adult abuse restraining order cases.

For the person to be restrained, having a restraining order against him or her can have very serious consequences:

- He or she will not be able to go to certain places or to do certain things.
- He or she might have to move out of his or her home.
- It may affect his or her ability to see his or her children.
- He or she will generally not be able to own a gun. (And he or she will have to turn in, sell or store any guns they have now and not be able to buy a gun while the restraining order is in effect.)
- It may affect his or her immigration status if he or she is trying to get a green card or a visa.

If the restrained person violates (breaks) the restraining order, he or she may go to jail, or pay a fine, or both.

TYPES OF RESTRAINING ORDERS

There are four kinds of orders you can ask for:

Domestic Violence Restraining Order

<http://www.courts.ca.gov/1260.htm#domestic>

You can ask for a domestic violence restraining order if:

- Someone has abused you, and
- You have a close relationship with that person (married or registered domestic partners, divorced, separated, dating or used to date, have a child together, or live together or used to live together — but more than roommates), or you are closely related (parent, child, brother, sister, grandmother, grandfather, in-law).

Elder or Dependent Adult Abuse Restraining Order

<http://www.courts.ca.gov/1260.htm#elder>

You can ask for an elder or dependent adult abuse restraining order if:

- You are 65 or older, OR
- You are between 18 and 64 and have certain mental or physical disabilities that keep you from being able to do normal activities or protect yourself;

AND

- You are a victim of:
 - Physical or financial abuse,
 - Neglect or abandonment,
 - Treatment that has physically or mentally hurt you, or
 - Deprivation by a caregiver of basic things or services you need so you will not suffer physically, mentally, or emotionally.

Civil Harassment Restraining Order

<http://www.courts.ca.gov/1260.htm#civil%20harassment>

You can ask for a civil harassment restraining order if you are being harassed, stalked, abused, or threatened by someone you are not as close to as is required under domestic violence cases, like a roommate, a neighbor, or more distant family members like cousins, aunts or uncles, or nieces or nephews.

Workplace Violence Restraining Order

<http://www.courts.ca.gov/1260.htm#workplace>

You can ask for a workplace violence restraining order if:

- You are an employer, and
- You ask for a restraining order to protect an employee who has suffered stalking, serious harassment, violence, or a credible (real) threat of violence at the workplace.

An employee CANNOT ask for a workplace violence restraining order. If the employee wants to protect him or herself, he or she can ask for a civil harassment restraining order (or a domestic violence restraining order if the abuser is a partner/spouse or former partner/spouse or close family member).

Find more information: <http://www.courts.ca.gov/1260.htm>

PROTECTION OF CONFIDENTIALITY

Advanced Career Institute will maintain the identity of any alleged victim or witness or third party reporter of domestic violence, dating violence, sexual assault or stalking on campus property in confidence unless the alleged victim or witness, or third party reporter specifically waives that right to confidentiality

ON AND OFF CAMPUS SERVICES

On Campus Services

Advanced Career Institute is committed to providing appropriate support to employees and students who are the victims of crime regardless of whether the offense occurred on or off campus. The Campus Director will coordinate these services. Advanced Career Institute does not employ pastoral counselors, professional therapists, or psychological counselors; however, referral to these support services can be arranged in a confidential meeting with the Campus Director.

Off-Campus Services

Rape/Abuse/Incest/National Network Hotline (800) 656-4673

The California Coalition Against Sexual Assault (916) 446-2520

The National Domestic Violence Hotline (800) 799-7233

CHANGES IN ACADEMIC/WORK SITUATION

Accommodations or protective measures may be made if they are requested and if they are reasonably available, regardless of whether the victim chooses to report the crime to campus police or local law enforcement.

- Student academic situation change request: Education Director, Larry Helmuth (559) 740-0215
- Employee work situation change request: Human Resources, Everett Yockey (559) 441-4345

PROCEDURES FOR DISCIPLINARY PROCEEDINGS

Advanced Career Institute is committed to providing a prompt, fair, and impartial process from the initial investigation to the final result for an institutional disciplinary proceeding. Disciplinary proceedings are in place for both students and employees. All proceedings, steps, and decision making processes will conform to all relevant statutes, regulations, personnel policies and regulations. Proceedings will be conducted by officials who receive annual training on the issues related to these crimes and may not have a conflict of interest or bias for or against the accuser or the accused.

The proceedings must be conducted in a manner that:

- is consistent with the institution's policies and transparent to the accuser and the accused
- should include timely notice of meetings at which the accuser or accused, or both, may be present
- provides timely and equal access to the accuser, the accused and appropriate officials to any information that will be used during informal and formal disciplinary meetings and hearings
- provides same opportunities to have others present during proceedings
- have no limitations on the choice of advisor for the accuser or accused
- provides simultaneous notification in writing:
- the result of any institutional disciplinary proceeding that arises from an allegation
- the institution's procedures for the accused and the victim to appeal the result of the institutional disciplinary proceeding, if such procedures are available
- any change of the result
- when such results become final

STANDARDS OF EVIDENCE

The standard of evidence used during an institutional disciplinary hearing will be a “preponderance of the evidence” standard. This definition is the same as is used in most civil courts, and is not the standard of beyond a reasonable doubt. The preponderance of the evidence means that the offense “more likely than not” occurred—i.e., greater than 50% likelihood.

SANCTIONS

The institution may impose sanctions following a final determination of an institutional disciplinary proceeding regarding domestic violence, dating violence, sexual assault, and stalking.

Possible sanctions include—

For students:

- reprimand
- loss of privileges
- restitution
- removal from class
- administrative hold
- suspension
- expulsion

For employees:

- suspension without pay
- demotion to a lower class in which qualified
- dismissal

PROTECTIVE MEASURES

All reasonable and available protective measures may be provided if the victim requests them and if they are reasonably available, regardless of whether the victim chooses to report the crime to campus police or local law enforcement. Protective measures may include;

- safety escorts
- giving “no contact” orders
- preventing offending third parties from entering campus
- adjusting class locations/schedules and or
- adjusting work office locations/schedules

APPEALS

If the institution imposes discipline against a student or employee as a result of the findings in its investigation, the student or employee may appeal the decision using the regulation for appealing a disciplinary decision.

WHERE AND HOW TO FILE A DISCIPLINARY COMPLAINT

Disciplinary complaints may be filed with the Campus Director at each Campus or by contacting any of the following Campus Security Authorities (CSA):

David Bither, EVP, Corporate Office
(559) 740-0215 ext. 101

Alexandra Rios, FAO, Corporate Office
(559-740-0215 ext. 102

Larry Helmuth, Campus Director, Visalia Campus
(559) 651-1978

Everett Yockey, Campus Director, Fresno Campus
(559) 441-4345

Everett Yockey, Campus Director, Merced Campus
(209) 580-4960

Everett Yockey, Campus Director, Bakersfield Campus
(661) 588-3525

Everett Yockey, Campus Director, Las Vegas Campus
(702) 476-5067

REGISTERED SEX OFFENDERS

The Jacob Wetterling Act requires states to obtain information concerning registered sex offenders' enrollment or employment at institutions of higher education. Those seeking to obtain information about registered sex offenders should visit the following website: www.nsopr.gov. Further, to the extent the State notifies an educational institution of information concerning registered sex offenders, the Family Educational Rights and Privacy Act (FERPA) does not prevent educational institutions from disclosing such information.

In the State of California, convicted sex offenders must register with the Sex Offender Tracking Program maintained by the California Department of Justice and is provided for the purposes including the protection of the general public. The California Department of Justice is responsible for maintaining this registry, located at: <http://www.meganslaw.ca.gov>. The Nevada State Registry can be found at: <http://www.nvsexoffenders.gov/ConditionsOfUse.aspx>.

EMERGENCY NOTIFICATION

It is the intent of Advanced Career Institute to protect students, visitors and employees from serious injury, property loss or loss of life. If a significant emergency or dangerous situation involving an immediate threat to the health and safety of students and employees occurs on campus, Advanced Career Institute will utilize its Emergency Notification System (Text Aim) to send a SMS text message and email to staff and students.

Persons responsible for planning, implementing and communicating urgent notifications are the Campus Director and Emergency Response Team (ERT). The responsibilities of the ERT include assessing the nature and extent of emergency, coordinating appropriate response, facilitating emergency evacuation or lockdown and administering first aid and CPR as a first responder. Some examples of significant emergencies include fire, hazardous material spill or release, disruptive or combative person, riot or civil disturbance, earthquake and bomb threat. Widespread emergencies

have the potential to prevent students and employees from reaching the campus and may necessitate its closure. During a widespread emergency, the Campus Director may decide to close the campus, keep the campus open under special conditions, or keep the campus open as usual.

The Campus Director's decision and any related information will be communicated to the campus community as follows:

Campus personnel will record a status message that can be heard on the main campus phone number. The message will be updated as necessary.

- Campus administration will make every reasonable effort to post status signs on the campus.
- Employees and students unable to reach the campus due to safety concerns should communicate their status by leaving a voice message, if possible, with the campus administration.

In addition, methods of immediate internal communication include automated alarm for the fire detection, verbal alert by ERT members, and/or telephone systems. External methods of notification include police or fire-rescue, civil defense system and commercial radio or television. Employee and students are to report emergencies to the Campus Director or front desk to initiate the process of the Emergency Response Team.

Maps are posted in numerous locations throughout the facilities. Employees and students should be aware of how they will evacuate the facilities, no matter where they are located. Basic instructions include evacuating quickly and orderly, without running, to the nearest exit at the sound of the fire alarm, proceeding to the gathering area and waiting for instructions, remaining in the gathering area until given permission to leave or return to the facility. Talking and cell phone use is prohibited. More detailed instructions are located in the Emergency Action Plan in each Office and Classroom.

Evacuation drills are conducted at student orientation for all students.

TIMELY WARNING

Advanced Career Institute takes seriously its responsibility to notify students and employees in a timely manner when any of the following have been reported to the Campus or local police agencies:

- Murder, non-negligent manslaughter, negligent manslaughter
- Forcible and non-forcible sex offenses
- Robbery
- Aggravated assault
- Burglary
- Motor vehicle theft
- Crimes of murder, forcible rape and aggravated assault that show evidence of prejudice based on race, religion, sexual orientation, ethnicity or disability

This timely warning information is provided in an appropriate manner in order to prevent similar crimes from occurring and to protect the personal safety of students and employees. Anyone with information warranting a timely warning should report by phone or in person the circumstances to the Campus Director, who is responsible for issuing these warnings. In the event that a situation arises, either on or off campus, that, in the judgment of the Campus Director, constitutes an ongoing or continuing threat, a campus wide "timely warning" will be issued without delay.

Information is released through security alerts posted through the use of an SMS text messaging system (Text Aim), email and telephone systems. Text Aim will send urgent notifications to staff and

students via SMS text message. Authorized users may enter a message, choose the campus location, and choose the recipient group from either, Staff, Students, or both. This message is then sent via text message. Employees and students may opt in or out of the emergency text messaging system. Warnings will be issued through e-mail or via Text Aim to students, faculty, and staff.

INFORMING THE LARGER COMMUNITY ON EMERGENCY NOTIFICATIONS:

If the Campus Security Authorities determine that notification of audiences other than students and employees is necessary and appropriate, Advanced Career Institutes procedures for disseminating emergency information to the larger community will include making pertinent information available on the institution's web site (www.advanced.edu). In addition, the institution will provide emergency information to area broadcast media as appropriate

EMERGENCY RESPONSE/EVACUATION PROCEDURES

The school maintains an Emergency Action Plan which includes evacuation procedures and is posted in the front office and in all classrooms at each campus. The institution's procedures are to test the emergency response and evacuation procedures on at least an annual basis. Please contact the Campus Director's Office for more information.

1. The Emergency Action Plan shall be tested as a planned/announced or unplanned/alarm exercise at least once annually. The test exercises may be any combination of building evacuation (fire, toxic exposure, armed assailant), lockdown (dangerous perpetrator) or shelter-in-place exercise.
2. The Campus Director or designee immediately announces the "alarm" and initiates the procedure developed for that situation.
3. The exercise is documented on the proper form to include a description of the exercise, the date, time, the time taken to successfully evacuate or achieve safety and whether it was announced or unannounced.

DRUG/ALCOHOL ABUSE PREVENTION POLICY

A school that participates in the FSA programs must provide information to its students, faculty, and employees to prevent drug and alcohol abuse.

DRUG FREE CAMPUS GUIDELINES

In compliance with the Drug-Free Schools and Communities Act (DFSCA), the school has set forth in this guide the legal penalties under Federal law for the illegal possession or distribution of drugs and alcohol, as well as the range of school sanctions that can be imposed for violation of the school's policies regarding substance abuse. Both students and employees should read this carefully.

POLICY

The United States Department of Education has issued regulations for the implementation of the provisions of the "Drug-Free Schools and Communities Act Amendments of 1989" (Public law 101-226). The school will distribute annually to each student and employee information regarding the unlawful possession, use, or distribution of illicit drugs and alcohol by students and employees on school property.

STANDARDS OF CONDUCT

The school is committed to a campus free of illegal drug use, misuse and abuse of prescription drugs, underage drinking and alcohol abuse. The school has no tolerance for illegal activity or any other

harmful conduct influenced by drugs or alcohol. Unlawful possession as well as the distribution of illegal drugs or alcohol is prohibited on school property or as part of its activities. The school will cooperate fully with law enforcement agencies and will apply appropriate internal disciplinary processes should a student or an employee violate criminal statutes with regard to illegal drugs or possession or sale of alcohol.

The two charts on the following pages show the Federal penalties.

Federal Trafficking Penalties for Schedules I, II, III, IV, and V (except Marijuana)				
Schedule	Substance/Quantity	Penalty	Substance/Quantity	Penalty
II	Cocaine 500-4999 grams mixture	<p>First Offense: Not less than 5 yrs. and not more than 40 yrs. If death or serious bodily injury, not less than 20 yrs. or more than life. Fine of not more than \$5 million if an individual, \$25 million if not an individual.</p> <p>Second Offense: Not less than 10 yrs. and not more than life. If death or serious bodily injury, life imprisonment. Fine of not more than \$8 million if an individual, \$50 million if not an individual.</p>	Cocaine 5 kilograms or more mixture	<p>First Offense: Not less than 10 yrs. and not more than life. If death or serious bodily injury, not less than 20 yrs. or more than life. Fine of not more than \$10 million if an individual, \$50 million if not an individual.</p> <p>Second Offense: Not less than 20 yrs. and not more than life. If death or serious bodily injury, life imprisonment. Fine of not more than \$20 million if an individual, \$75 million if not an individual.</p> <p>2 or More Prior Offenses: Life imprisonment. Fine of not more than \$20 million if an individual, \$75 million if not an individual.</p>
II	Cocaine Base 28-279 grams mixture		Cocaine Base 280 grams or more mixture	
IV	Fentanyl 40-399 grams mixture		Fentanyl 400 grams or more mixture	
I	Fentanyl Analogue 10-99 grams mixture		Fentanyl Analogue 100 grams or more mixture	
I	Heroin 100-999 grams mixture		Heroin 1 kilogram or more mixture	
I	LSD 1-9 grams mixture		LSD 10 grams or more mixture	
II	Methamphetamine 5-49 grams pure or 50-499 grams mixture		Methamphetamine 50 grams or more pure or 500 grams or more mixture	
II	PCP 10-99 grams pure or 100-999 grams mixture		PCP 100 grams or more pure or 1 kilogram or more mixture	

Substance/Quantity	Penalty
<p>Any Amount Of Other Schedule I & II Substances</p> <p>Any Drug Product Containing Gamma Hydroxybutyric Acid</p> <p>Flunitrazepam (Schedule IV)</p> <p>1 Gram</p>	<p>First Offense: Not more that 20 yrs. If death or serious bodily injury, not less than 20 yrs. or more than Life. Fine \$1 million if an individual, \$5 million if not an individual.</p> <p>Second Offense: Not more than 30 yrs. If death or serious bodily injury, life imprisonment. Fine \$2 million if an individual, \$10 million if not an individual.</p>
<p>Any Amount Of Other Schedule III Drugs</p>	<p>First Offense: Not more than 10 yrs. If death or serious bodily injury, not more that 15 yrs. Fine not more than \$500,000 if an individual, \$2.5 million if not an individual.</p> <p>Second Offense: Not more than 20 yrs. If death or serious injury, not more than 30 yrs. Fine not more than \$1 million if an individual, \$5 million if not an individual.</p>
<p>Any Amount Of All Other Schedule IV Drugs (other than one gram or more of Flunitrazepam)</p>	<p>First Offense: Not more than 5 yrs. Fine not more than \$250,000 if an individual, \$1 million if not an individual.</p> <p>Second Offense: Not more than 10 yrs. Fine not more than \$500,000 if an individual, \$2 million if other than an individual.</p>
<p>Any Amount Of All Schedule V Drugs</p>	<p>First Offense: Not more than 1 yr. Fine not more than \$100,000 if an individual, \$250,000 if not an individual.</p> <p>Second Offense: Not more than 4 yrs. Fine not more than \$200,000 if an individual, \$500,000 if not an individual.</p>

Federal Trafficking Penalties for Marijuana, Hashish and Hashish Oil, Schedule I Substances	
<p>Marijuana 1,000 kilograms or more marijuana mixture or 1,000 or more marijuana plants</p>	<p>First Offense: Not less than 10 yrs. or more than life. If death or serious bodily injury, not less than 20 yrs., or more than life. Fine not more than \$10 million if an individual, \$50 million if other than an individual.</p> <p>Second Offense: Not less than 20 yrs. or more than life. If death or serious bodily injury, life imprisonment. Fine not more than \$20 million if an individual, \$75 million if other than an individual.</p>
<p>Marijuana 100 to 999 kilograms marijuana mixture or 100 to 999 marijuana plants</p>	<p>First Offense: Not less than 5 yrs. or more than 40 yrs. If death or serious bodily injury, not less than 20 yrs. or more than life. Fine not more than \$5 million if an individual, \$25 million if other than an individual.</p> <p>Second Offense: Not less than 10 yrs. or more than life. If death or serious bodily injury, life imprisonment. Fine not more than \$8 million if an individual, \$50 million if other than an individual.</p>
<p>Marijuana 50 to 99 kilograms marijuana mixture, 50 to 99 marijuana plants</p>	<p>First Offense: Not more than 20 yrs. If death or serious bodily injury, not less than 20 yrs. or more than life. Fine \$1 million if an individual, \$5 million if other than an individual.</p> <p>Second Offense: Not more than 30 yrs. If death or serious bodily injury, life imprisonment. Fine \$2 million if an individual, \$10 million if other than an individual.</p>
<p>More than 10 kilograms</p>	
<p>Hashish Oil More than 1 kilogram</p>	
<p>Marijuana less than 50 kilograms marijuana (but does not include 50 or more marijuana plants regardless of weight)</p>	<p>First Offense: Not more than 5 yrs. Fine not more than \$250,000, \$1 million if other than an individual.</p> <p>Second Offense: Not more than 10 yrs. Fine \$500,000 if an individual, \$2 million if other than individual.</p>
<p>1 to 49 marijuana plants</p>	
<p>Hashish 10 kilograms or less</p>	
<p>Hashish Oil 1 kilogram or less</p>	

HEALTH RISKS

The following briefly summarizes health risks and symptoms associated with the use of alcohol and other drugs. It is important to note that individuals experience alcohol and drugs in different ways based on physical tolerance, body size and gender, and on a variety of other physical and psychological factors.

Alcohol:

Alcohol consumption causes a number of changes in behavior. Even low doses significantly impair the judgment and coordination required to drive a car safely, increasing the likelihood that the driver will be involved in an accident. Low to moderate doses of alcohol also increase the incidence of a variety of aggressive acts. Moderate to high doses of alcohol cause marked impairments in higher mental functions severely altering a person's ability to learn and remember information. Very high doses cause respiratory depression and death. If combined with other depressants of the central nervous system, much lower doses of alcohol will produce the effects just described. Repeated use of alcohol can lead to dependence. Sudden cessation of alcohol intake is likely to produce withdrawal symptoms, including severe anxiety, tremors, hallucinations and convulsions.

Long-term consumption of large quantities of alcohol can also lead to permanent damage to vital organs such as the brain and the liver. Mothers who drink during pregnancy may give birth to infants with fetal alcohol syndrome. These infants have irreversible physical abnormalities and mental retardation. In addition, research indicates that children of alcoholic parents are at greater risk than others of developing alcohol related problems.

California Laws & Sanctions:

California law prohibits the possession of alcoholic beverages on any school property or school-sponsored event. The penalties for violations of these laws may include substantial fines and jail.

State law also prohibits driving a motor vehicle under the influence. A blood alcohol level of .08 percent or higher creates a presumption of intoxication, but charges can be filed with lower blood alcohol levels, drinking or possessing an open container of alcohol while driving and operating a bicycle while intoxicated.

Driving while under the influence penalties include jail or prison, fines of \$1,000 or more, driver's license suspension or revocation, and required drug/alcohol treatment programs. Refusing to submit to a test for blood alcohol can result in suspension of driver's license for up to 3 years.

Sale or possession for sale of controlled substances such as cocaine, methamphetamines, heroin, Ecstasy, GHB, Ketamine, LSD, PCP, and "designer drugs" is a felony with terms of 7 years or more; manufacture results in terms of 20 years or more; possession alone is punishable by up to 7 years in prison.

Sentences are enhanced for previously convicted felons, for distribution within 1,000 feet of a school or District campus or within 100 feet of a recreational facility, and for distribution to a pregnant woman or to someone under 18 by one over 18. Property used in drug transactions can be seized.

Cigarettes and other Nicotine Products:

In 1989, the U.S. Surgeon General issued a report that concluded that cigarettes and other forms of tobacco, such as cigars, pipe tobacco and chewing tobacco, are addictive and that nicotine is the drug in tobacco that causes addiction. In addition, the report determined that smoking was a major cause of stroke and the third leading cause of death in the United States. Nicotine is both a stimulant and a

sedative to the central nervous system. Nicotine is absorbed readily from tobacco smoke in the lungs, and it does not matter whether the tobacco smoke is from cigarettes, cigars, or pipes, Nicotine also is absorbed readily when tobacco is chewed.

In addition to nicotine, cigarette smoke is primarily composed of a dozen gases (mainly carbon monoxide) and tar. The tar in a cigarette, which varies from about 15 mg for a regular cigarette to 7 mg in a low-tar cigarette, exposes the user to a high expectancy rate of lung cancer, emphysema, and bronchial disorders. The carbon monoxide in the smoke increases the chance of cardiovascular diseases. The Environmental Protection Agency has concluded that secondhand smoke causes lung cancer in adults and greatly increases the risk of respiratory illnesses in children and sudden infant death.

Prescription Medications:

Prescription drugs that are abused or used for non-medical reasons can alter brain activity and lead to dependence. Commonly abused classes of prescription drugs include opioids (often prescribed in the treatment of pain), central nervous system depressants (often prescribed to treat anxiety and sleep disorders), and stimulants (prescribed to treat narcolepsy, ADHD, and obesity). Long-term use of opioids or central nervous system depressants can lead to physical dependence and addiction. Taken in high doses, stimulants can lead to compulsive use, paranoia, dangerously high body temperatures and irregular heartbeat.

Marijuana:

Marijuana use can lead to a number of long term and short term physical and psychological effects. Marijuana use leads to a substantial increase in the heart rate, impairs short term memory and comprehension and motivation can be altered.

Cocaine and Crack:

Health risks may include changes in body temperature and blood pressure as well as heart and breathing rates. Even small amounts may cause the body to exceed its own limits, sometimes resulting in death. Snorting cocaine may severely damage nasal tissue and the septum. Smoking cocaine may damage the lungs. Someone using cocaine may experience muscle twitching, panic reactions, anxiety, numbness in hands and feet, loss of weight, a period of hyperactivity followed by a crash, a runny or bleeding nose, and depression. Other symptoms of cocaine use may include nausea, vomiting, insomnia, tremors, and convulsions. Chronic users may become paranoid and/or experience hallucinations.

Barbiturates:

In small doses, barbiturates produce calmness, relaxed muscles, and lowered anxiety. Larger doses cause slurred speech, staggering gait, and altered perception. Very large doses or doses taken in combination with other central nervous system depressants (e.g., alcohol) may cause respiratory depression, coma and even death. A person who uses barbiturates may have poor muscle control, appear drowsy or drunk, become confused, irritable, or inattentive, or have slowed reactions.

Amphetamines:

Amphetamines, methamphetamines, or other stimulants can cause increased heart rate and respiratory rates, elevated blood pressure, and dilated pupils. Larger doses cause rapid or irregular heartbeat, tremors, and physical collapse. An amphetamine injection creates a sudden increase in blood pressure that can result in stroke, high fever, heart failure and death. An individual using amphetamines might

begin to lose weight, have the sweats, and appear restless, anxious, moody, and unable to focus. Extended use may produce psychosis, including hallucinations, delusions and paranoia.

Hallucinogens:

PCP, or angel dust, interrupts the part of the brain that controls the intellect and keeps instincts in check. PCP blocks pain receptors. Violent episodes, including self-inflicted injuries, are not uncommon. Chronic users report memory loss and speech difficulty. Very large doses produce convulsions, coma, heart and lung failure, or ruptured blood vessels in the brain. LSD, mescaline, peyote, etc. cause dilated pupils, elevated body temperature, increased heart rate and blood pressure and tremors. Someone under the influence of PCP might appear moody, aggressive, or violent. Sleeplessness, confusion, anxiety, and panic, and may report perceptual distortions. Flashbacks may occur.

Steroids (anabolic):

Anabolic steroids are human-made substances related to male sex hormones. Some athletes abuse anabolic steroids to enhance performance. Abuse of anabolic steroids can lead to serious health problems, some of which are irreversible. Short term side effects include depression, hallucinations, paranoia, severe mood swings and aggressive behavior. Major side effects also can include liver tumors and cancer, jaundice, high blood pressure, kidney tumors, severe acne and trembling. In males side effects may include shrinking of the testicles and breast development. In females, side effects may include growth of facial hair, menstrual changes and deepened voice. In teenagers, growth may be halted prematurely and permanently.

Narcotics:

Because narcotics are generally injected, the use of contaminated needles may result in the contraction of many different diseases, including AIDS and hepatitis. Symptoms of overdose include shallow breathing, clammy skin, convulsions, and coma and may result in death. Some signs of narcotic use are euphoria, drowsiness, constricted pupils, and nausea. Other symptoms include itchy skin, needle or “track” marks on the arms and legs, nodding, lack of sex drive and appetite, sweating, cramps and nausea when withdrawing from the drug.

TREATMENT

Medication and behavioral therapy, alone or in combination, are aspects of an overall therapeutic process that often begins with detoxification, followed by treatment and relapse prevention. Easing withdrawal symptoms can be important in the initiation of treatment; preventing relapse is necessary for maintaining its effects. And sometimes, as with other chronic conditions, episodes of relapse may require a return to prior treatment components. A continuum of care that includes a customized treatment regimen, addressing all aspects of an individual’s life including medical and mental health services, and follow-up options (e.g. community or family based recovery support systems) can be crucial to a person’s success in achieving and maintaining a drug-free lifestyle.

Below are some local substance abuse providers in your area:

WestCare California, Inc.	2772 S M.L.K. Jr Blvd., Fresno, CA 93706 (559) 265-4800	Men and women, 18 years of age and over.
Fresno New Connections, Inc.	4411 N. Cedar Avenue, #108 Fresno, CA 93726 (559) 248-1548	Men and women, 18 years of age and over.
Tulare County Mental Health Alcohol and Drug	942 S. Santa Fe Ave. (West Side of Building) Visalia, CA 93292 (800) 834-7121 (559) 636-4000	Tulare County Residents
Merced County Alcohol & Drug	1628 N St, Merced, CA 95340 (209) 381-6809	Merced County Residents
Kern Behavioral Health & Recovery Services	2001, 28th Street Bakersfield, California 93301 (661) 868 - 6600	Kern County Residents
WestCare Nevada - Community Involvement Center	323 N Maryland Pkwy, Las Vegas, NV 89101 (702) 385-3330	Men and women, 18 years of age and over.

Hotline Numbers:

National Drug and Alcohol Treatment referral Services: 1-800-662-4357

1-800-879-2772 (toll-free)	Available 24 hours a day Answered by ADP staff 8:00 a.m. – 4:30 p.m. and by voicemail after-hours
1-800-662-4357 (toll-free)	Available 24 hours a day from telephone numbers within California Answered by ADP staff 8:00 a.m. – 4:30 p.m. and by the U.S. Department of Health and Human Services staff after-hours

SCHOOL DISCIPLINARY SANCTIONS:

It is the school policy to discourage all violations of Federal, State or local laws by any member of the school community. In addition to possible prosecution and punishment by civil authorities, a student or employee violating any law may be subject to sanctions imposed by the school.

Students:

Sanctions against students for violations of the standards of conduct (consistent with local, state, and federal law) include but are not limited to, disciplinary expulsion, suspension, and/or probation. When appropriate, school sanctions may be entered into permanent records. Parents of dependent students will be notified of pending charges or subsequent decisions.

Faculty:

Faculty who violate the school's standards of conduct are subject to disciplinary action including reprimand, suspension, or dismissal.

Other Employees:

The school may impose sanctions against any employee who violates Federal, State or local laws, or the standards of school conduct. Depending on the nature and severity of the violation, these sanctions can range from warnings and/or mandatory referral for drug or alcohol rehabilitation to outright termination of employment.

Note:

Under the Higher Education Act, a student may become ineligible for federal student aid upon conviction of any offense involving the possession or sale of illegal drugs while receiving Title IV federal financial aid.

VISALIA CAMPUS CRIME STATISTICS

The following criminal offenses occurred during the calendar years listed.

CRIMINAL OFFENSES	On Campus			Noncampus			Public Property		
	2021	2022	2023	2021	2022	2023	2021	2022	2023
Murder/Non-Negligent Manslaughter	0	0	0	0	0	0	0	0	0
Manslaughter by Negligence	0	0	0	0	0	0	0	0	0
Rape	0	0	0	0	0	0	0	0	0
Fondling	0	0	0	0	0	0	0	0	0
Incest	0	0	0	0	0	0	0	0	0
Statutory Rape	0	0	0	0	0	0	0	0	0
Robbery	0	0	0	0	0	0	0	0	0
Aggravated Assault	0	0	0	0	0	0	0	0	0
Burglary	0	0	0	0	0	0	0	0	0
Motor Vehicle Theft	0	0	0	0	0	0	0	0	0
Arson	0	0	0	0	0	0	0	0	0
HATE CRIMES ON CAMPUS	2023	Race	Religion	Sexual Orientation	Gender	Gender Identity	Disability	Ethnicity	National Origin
Murder/Non-Negligent Manslaughter	0	0	0	0	0	0	0	0	0
Rape	0	0	0	0	0	0	0	0	0
Fondling	0	0	0	0	0	0	0	0	0
Incest	0	0	0	0	0	0	0	0	0
Statutory Rape	0	0	0	0	0	0	0	0	0
Robbery	0	0	0	0	0	0	0	0	0
Aggravated Assault	0	0	0	0	0	0	0	0	0
Burglary	0	0	0	0	0	0	0	0	0
Motor Vehicle Theft	0	0	0	0	0	0	0	0	0
Arson	0	0	0	0	0	0	0	0	0
Simple Assault	0	0	0	0	0	0	0	0	0
Larceny/Theft	0	0	0	0	0	0	0	0	0
Intimidation	0	0	0	0	0	0	0	0	0
Destruction/Damage/Vandalism of Property	0	0	0	0	0	0	0	0	0
HATE CRIMES NONCAMPUS	2023	Race	Religion	Sexual Orientation	Gender	Gender Identity	Disability	Ethnicity	National Origin
Murder/Non-Negligent Manslaughter	0	0	0	0	0	0	0	0	0
Rape	0	0	0	0	0	0	0	0	0
Fondling	0	0	0	0	0	0	0	0	0
Incest	0	0	0	0	0	0	0	0	0
Statutory Rape	0	0	0	0	0	0	0	0	0
Robbery	0	0	0	0	0	0	0	0	0
Aggravated Assault	0	0	0	0	0	0	0	0	0
Burglary	0	0	0	0	0	0	0	0	0

HATE CRIMES NONCAMPUS CONTINUED	2023	Race	Religion	Sexual Orientation	Gender	Gender Identity	Disability	Ethnicity	National Origin
Motor Vehicle Theft	0	0	0	0	0	0	0	0	0
Arson	0	0	0	0	0	0	0	0	0
Simple Assault	0	0	0	0	0	0	0	0	0
Larceny/Theft	0	0	0	0	0	0	0	0	0
Intimidation	0	0	0	0	0	0	0	0	0
Destruction/Damage/Vandalism of Property	0	0	0	0	0	0	0	0	0
HATE CRIMES PUBLIC PROPERTY	2023	Race	Religion	Sexual Orientation	Gender	Gender Identity	Disability	Ethnicity	National Origin
Murder/Non-Negligent Manslaughter	0	0	0	0	0	0	0	0	0
Rape	0	0	0	0	0	0	0	0	0
Fondling	0	0	0	0	0	0	0	0	0
Incest	0	0	0	0	0	0	0	0	0
Statutory Rape	0	0	0	0	0	0	0	0	0
Robbery	0	0	0	0	0	0	0	0	0
Aggravated Assault	0	0	0	0	0	0	0	0	0
Burglary	0	0	0	0	0	0	0	0	0
Motor Vehicle Theft	0	0	0	0	0	0	0	0	0
Arson	0	0	0	0	0	0	0	0	0
Simple Assault	0	0	0	0	0	0	0	0	0
Larceny/Theft	0	0	0	0	0	0	0	0	0
Intimidation	0	0	0	0	0	0	0	0	0
Destruction/Damage/Vandalism of Property	0	0	0	0	0	0	0	0	0
HATE CRIMES ON CAMPUS	2022	Race	Religion	Sexual Orientation	Gender	Gender Identity	Disability	Ethnicity	National Origin
Murder/Non-Negligent Manslaughter	0	0	0	0	0	0	0	0	0
Rape	0	0	0	0	0	0	0	0	0
Fondling	0	0	0	0	0	0	0	0	0
Incest	0	0	0	0	0	0	0	0	0
Statutory Rape	0	0	0	0	0	0	0	0	0
Robbery	0	0	0	0	0	0	0	0	0
Aggravated Assault	0	0	0	0	0	0	0	0	0
Burglary	0	0	0	0	0	0	0	0	0
Motor Vehicle Theft	0	0	0	0	0	0	0	0	0
Arson	0	0	0	0	0	0	0	0	0
Simple Assault	0	0	0	0	0	0	0	0	0
Larceny/Theft	0	0	0	0	0	0	0	0	0
Intimidation	0	0	0	0	0	0	0	0	0
Destruction/Damage/Vandalism of Property	0	0	0	0	0	0	0	0	0

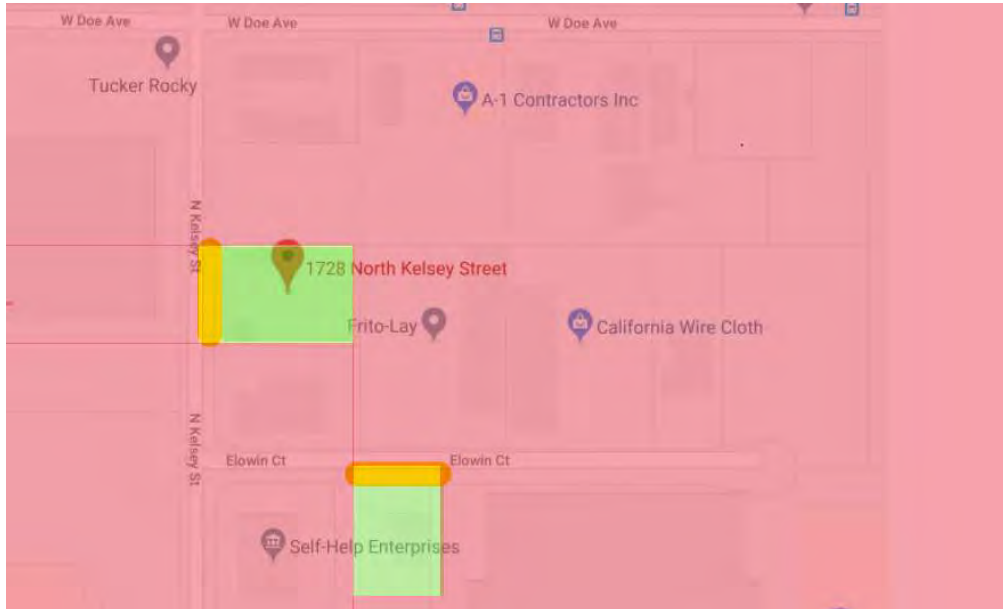
HATE CRIMES NONCAMPUS	2022	Race	Religion	Sexual Orientation	Gender	Gender Identity	Disability	Ethnicity	National Origin
Murder/Non-Negligent Manslaughter	0	0	0	0	0	0	0	0	0
Rape	0	0	0	0	0	0	0	0	0
Fondling	0	0	0	0	0	0	0	0	0
Incest	0	0	0	0	0	0	0	0	0
Statutory Rape	0	0	0	0	0	0	0	0	0
Robbery	0	0	0	0	0	0	0	0	0
Aggravated Assault	0	0	0	0	0	0	0	0	0
Burglary	0	0	0	0	0	0	0	0	0
HATE CRIMES NONCAMPUS CONTINUED	2022	Race	Religion	Sexual Orientation	Gender	Gender Identity	Disability	Ethnicity	National Origin
Motor Vehicle Theft	0	0	0	0	0	0	0	0	0
Arson	0	0	0	0	0	0	0	0	0
Simple Assault	0	0	0	0	0	0	0	0	0
Larceny/Theft	0	0	0	0	0	0	0	0	0
Intimidation	0	0	0	0	0	0	0	0	0
Destruction/Damage/Vandalism of Property	0	0	0	0	0	0	0	0	0
HATE CRIMES PUBLIC PROPERTY	2022	Race	Religion	Sexual Orientation	Gender	Gender Identity	Disability	Ethnicity	National Origin
Murder/Non-Negligent Manslaughter	0	0	0	0	0	0	0	0	0
Rape	0	0	0	0	0	0	0	0	0
Fondling	0	0	0	0	0	0	0	0	0
Incest	0	0	0	0	0	0	0	0	0
Statutory Rape	0	0	0	0	0	0	0	0	0
Robbery	0	0	0	0	0	0	0	0	0
Aggravated Assault	0	0	0	0	0	0	0	0	0
Burglary	0	0	0	0	0	0	0	0	0
Motor Vehicle Theft	0	0	0	0	0	0	0	0	0
Arson	0	0	0	0	0	0	0	0	0
Simple Assault	0	0	0	0	0	0	0	0	0
Larceny/Theft	0	0	0	0	0	0	0	0	0
Intimidation	0	0	0	0	0	0	0	0	0
Destruction/Damage/Vandalism of Property	0	0	0	0	0	0	0	0	0
HATE CRIMES ON CAMPUS	2021	Race	Religion	Sexual Orientation	Gender	Gender Identity	Disability	Ethnicity	National Origin
Murder/Non-Negligent Manslaughter	0	0	0	0	0	0	0	0	0
Rape	0	0	0	0	0	0	0	0	0
Fondling	0	0	0	0	0	0	0	0	0
Incest	0	0	0	0	0	0	0	0	0
Statutory Rape	0	0	0	0	0	0	0	0	0
Robbery	0	0	0	0	0	0	0	0	0
Aggravated Assault	0	0	0	0	0	0	0	0	0
Burglary	0	0	0	0	0	0	0	0	0
Motor Vehicle Theft	0	0	0	0	0	0	0	0	0

HATE CRIMES ON CAMPUS CON TINUED	2021	Race	Religion	Sexual Orientation	Gender	Gender Identity	Disability	Ethnicity	National Origin
Arson	0	0	0	0	0	0	0	0	0
Simple Assault	0	0	0	0	0	0	0	0	0
Larceny/Theft	0	0	0	0	0	0	0	0	0
Intimidation	0	0	0	0	0	0	0	0	0
Destruction/Damage/Vandalism of Property	0	0	0	0	0	0	0	0	0
HATE CRIMES NONCAMPUS	2021	Race	Religion	Sexual Orientation	Gender	Gender Identity	Disability	Ethnicity	National Origin
Murder/Non-Negligent Manslaughter	0	0	0	0	0	0	0	0	0
Rape	0	0	0	0	0	0	0	0	0
Fondling	0	0	0	0	0	0	0	0	0
Incest	0	0	0	0	0	0	0	0	0
Statutory Rape	0	0	0	0	0	0	0	0	0
Robbery	0	0	0	0	0	0	0	0	0
Aggravated Assault	0	0	0	0	0	0	0	0	0
Burglary	0	0	0	0	0	0	0	0	0
Motor Vehicle Theft	0	0	0	0	0	0	0	0	0
Arson	0	0	0	0	0	0	0	0	0
Simple Assault	0	0	0	0	0	0	0	0	0
Larceny/Theft	0	0	0	0	0	0	0	0	0
Intimidation	0	0	0	0	0	0	0	0	0
Destruction/Damage/Vandalism of Property	0	0	0	0	0	0	0	0	0
HATE CRIMES PUBLIC PROPERTY	2021	Race	Religion	Sexual Orientation	Gender	Gender Identity	Disability	Ethnicity	National Origin
Murder/Non-Negligent Manslaughter	0	0	0	0	0	0	0	0	0
Rape	0	0	0	0	0	0	0	0	0
Fondling	0	0	0	0	0	0	0	0	0
Incest	0	0	0	0	0	0	0	0	0
Statutory Rape	0	0	0	0	0	0	0	0	0
Robbery	0	0	0	0	0	0	0	0	0
Aggravated Assault	0	0	0	0	0	0	0	0	0
Burglary	0	0	0	0	0	0	0	0	0
Motor Vehicle Theft	0	0	0	0	0	0	0	0	0
Arson	0	0	0	0	0	0	0	0	0
Simple Assault	0	0	0	0	0	0	0	0	0
Larceny/Theft	0	0	0	0	0	0	0	0	0
Intimidation	0	0	0	0	0	0	0	0	0
Destruction/Damage/Vandalism of Property	0	0	0	0	0	0	0	0	0
VAWA OFFENSES	On Campus			Noncampus			Public Property		
	2021	2022	2023	2021	2022	2023	2021	2022	2023
Domestic Violence	0	0	0	0	0	0	0	0	0
Dating Violence	0	0	0	0	0	0	0	0	0
Stalking	0	0	0	0	0	0	0	0	0

ARREST	On Campus			Noncampus			Public Property		
	2021	2022	2023	2021	2022	2023	2021	2022	2023
Weapons: Carrying, Possessing, etc.	0	0	0	0	0	0	0	0	0
Drug Abuse Violation	0	0	0	0	0	0	0	0	0
Liquor Law Violations	0	0	0	0	0	0	0	0	0
DISCIPLINARY ACTIONS	On Campus			Noncampus			Public Property		
	2021	2022	2023	2021	2022	2023	2021	2022	2023
Weapons: Carrying, Possessing, etc.	0	0	0	0	0	0	0	0	0
Drug Abuse Violation	0	0	0	0	0	0	0	0	0
Liquor Law Violations	0	0	0	0	0	0	0	0	0
UNFOUNDED CRIMES	2021			2022			2023		
	0			0			0		

VISALIA CAMPUS CLERY MAP (GEOGRAPHY)

The preceding crime statistic tables reflect the mandatory reporting offenses as specified in the Jeanne Clery Act. The tables display crime data over the past three calendar years and are separated by crimes occurring in four different geographical locations: 1. On Campus – the main core campus 2. Non-Campus - crimes occurring off of campus property, and 3. Public Property - crimes occurring on the borders of the Campus.



- Public Property
- On Campus
- NonCampus

FRESNO CAMPUS CRIME STATISTICS

The following criminal offenses occurred during the calendar years listed.

CRIMINAL OFFENSES	On Campus			Noncampus			Public Property		
	2021	2022	2023	2021	2022	2023	2021	2022	2023
Murder/Non-Negligent Manslaughter	0	0	0	0	0	0	0	0	0
Manslaughter by Negligence	0	0	0	0	0	0	0	0	0
Rape	0	0	0	0	0	0	0	0	0
Fondling	0	0	0	0	0	0	0	0	0
Incest	0	0	0	0	0	0	0	0	0
Statutory Rape	0	0	0	0	0	0	0	0	0
Robbery	0	0	0	0	0	0	0	0	0
Aggravated Assault	0	0	0	0	0	0	0	0	0
Burglary	0	0	0	0	0	0	0	0	0
Motor Vehicle Theft	0	0	0	0	0	0	0	0	0
Arson	0	0	0	0	0	0	0	0	0
HATE CRIMES ON CAMPUS	2023	Race	Religion	Sexual Orientation	Gender	Gender Identity	Disability	Ethnicity	National Origin
Murder/Non-Negligent Manslaughter	0	0	0	0	0	0	0	0	0
Rape	0	0	0	0	0	0	0	0	0
Fondling	0	0	0	0	0	0	0	0	0
Incest	0	0	0	0	0	0	0	0	0
Statutory Rape	0	0	0	0	0	0	0	0	0
Robbery	0	0	0	0	0	0	0	0	0
Aggravated Assault	0	0	0	0	0	0	0	0	0
Burglary	0	0	0	0	0	0	0	0	0
Motor Vehicle Theft	0	0	0	0	0	0	0	0	0
Arson	0	0	0	0	0	0	0	0	0
Simple Assault	0	0	0	0	0	0	0	0	0
Larceny/Theft	0	0	0	0	0	0	0	0	0
Intimidation	0	0	0	0	0	0	0	0	0
Destruction/Damage/Vandalism of Property	0	0	0	0	0	0	0	0	0
HATE CRIMES NONCAMPUS	2023	Race	Religion	Sexual Orientation	Gender	Gender Identity	Disability	Ethnicity	National Origin
Murder/Non-Negligent Manslaughter	0	0	0	0	0	0	0	0	0
Rape	0	0	0	0	0	0	0	0	0
Fondling	0	0	0	0	0	0	0	0	0
Incest	0	0	0	0	0	0	0	0	0
Statutory Rape	0	0	0	0	0	0	0	0	0
Robbery	0	0	0	0	0	0	0	0	0
Aggravated Assault	0	0	0	0	0	0	0	0	0
Burglary	0	0	0	0	0	0	0	0	0

HATE CRIMES NONCAMPUS CONTINUED	2023	Race	Religion	Sexual Orientation	Gender	Gender Identity	Disability	Ethnicity	National Origin
Motor Vehicle Theft	0	0	0	0	0	0	0	0	0
Arson	0	0	0	0	0	0	0	0	0
Simple Assault	0	0	0	0	0	0	0	0	0
Larceny/Theft	0	0	0	0	0	0	0	0	0
Intimidation	0	0	0	0	0	0	0	0	0
Destruction/Damage/Vandalism of Property	0	0	0	0	0	0	0	0	0
HATE CRIMES PUBLIC PROPERTY	2023	Race	Religion	Sexual Orientation	Gender	Gender Identity	Disability	Ethnicity	National Origin
Murder/Non-Negligent Manslaughter	0	0	0	0	0	0	0	0	0
Rape	0	0	0	0	0	0	0	0	0
Fondling	0	0	0	0	0	0	0	0	0
Incest	0	0	0	0	0	0	0	0	0
Statutory Rape	0	0	0	0	0	0	0	0	0
Robbery	0	0	0	0	0	0	0	0	0
Aggravated Assault	0	0	0	0	0	0	0	0	0
Burglary	0	0	0	0	0	0	0	0	0
Motor Vehicle Theft	0	0	0	0	0	0	0	0	0
Arson	0	0	0	0	0	0	0	0	0
Simple Assault	0	0	0	0	0	0	0	0	0
Larceny/Theft	0	0	0	0	0	0	0	0	0
Intimidation	0	0	0	0	0	0	0	0	0
Destruction/Damage/Vandalism of Property	0	0	0	0	0	0	0	0	0
HATE CRIMES ON CAMPUS	2022	Race	Religion	Sexual Orientation	Gender	Gender Identity	Disability	Ethnicity	National Origin
Murder/Non-Negligent Manslaughter	0	0	0	0	0	0	0	0	0
Rape	0	0	0	0	0	0	0	0	0
Fondling	0	0	0	0	0	0	0	0	0
Incest	0	0	0	0	0	0	0	0	0
Statutory Rape	0	0	0	0	0	0	0	0	0
Robbery	0	0	0	0	0	0	0	0	0
Aggravated Assault	0	0	0	0	0	0	0	0	0
Burglary	0	0	0	0	0	0	0	0	0
Motor Vehicle Theft	0	0	0	0	0	0	0	0	0
Arson	0	0	0	0	0	0	0	0	0
Simple Assault	0	0	0	0	0	0	0	0	0
Larceny/Theft	0	0	0	0	0	0	0	0	0
Intimidation	0	0	0	0	0	0	0	0	0
Destruction/Damage/Vandalism of Property	0	0	0	0	0	0	0	0	0

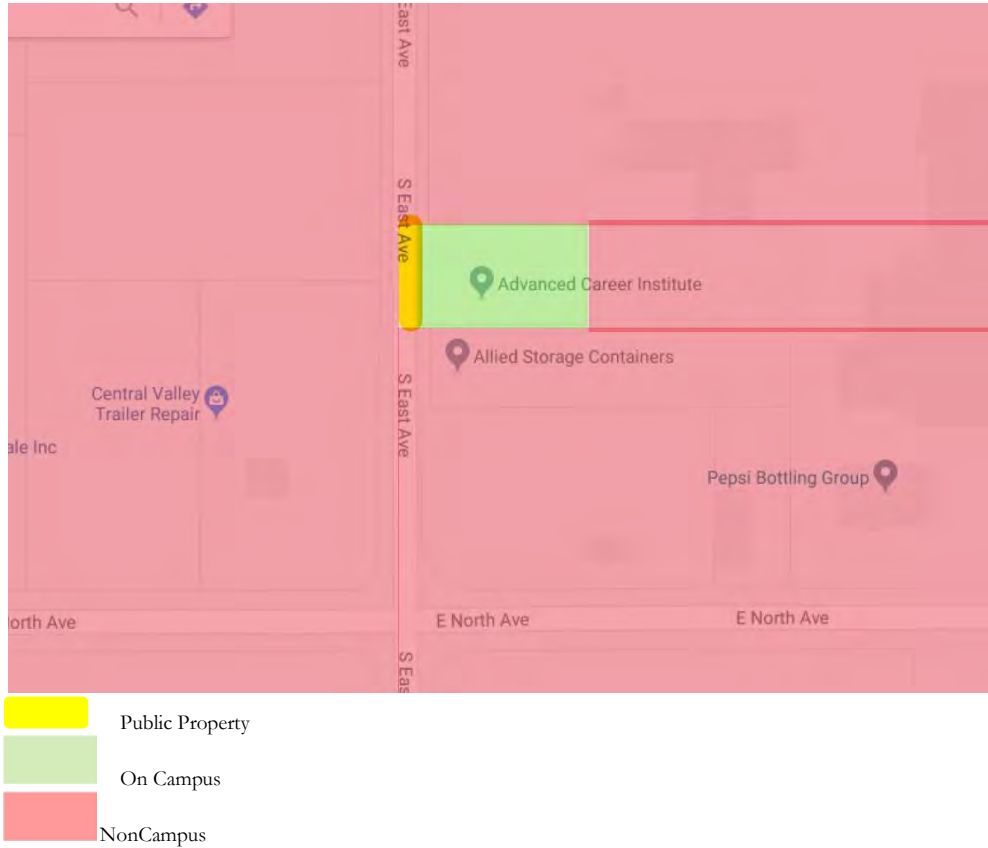
HATE CRIMES NONCAMPUS	2022	Race	Religion	Sexual Orientation	Gender	Gender Identity	Disability	Ethnicity	National Origin
Murder/Non-Negligent Manslaughter	0	0	0	0	0	0	0	0	0
Rape	0	0	0	0	0	0	0	0	0
Fondling	0	0	0	0	0	0	0	0	0
Incest	0	0	0	0	0	0	0	0	0
Statutory Rape	0	0	0	0	0	0	0	0	0
Robbery	0	0	0	0	0	0	0	0	0
Aggravated Assault	0	0	0	0	0	0	0	0	0
Burglary	0	0	0	0	0	0	0	0	0
HATE CRIMES NONCAMPUS CONTINUED	2022	Race	Religion	Sexual Orientation	Gender	Gender Identity	Disability	Ethnicity	National Origin
Motor Vehicle Theft	0	0	0	0	0	0	0	0	0
Arson	0	0	0	0	0	0	0	0	0
Simple Assault	0	0	0	0	0	0	0	0	0
Larceny/Theft	0	0	0	0	0	0	0	0	0
Intimidation	0	0	0	0	0	0	0	0	0
Destruction/Damage/Vandalism of Property	0	0	0	0	0	0	0	0	0
HATE CRIMES PUBLIC PROPERTY	2022	Race	Religion	Sexual Orientation	Gender	Gender Identity	Disability	Ethnicity	National Origin
Murder/Non-Negligent Manslaughter	0	0	0	0	0	0	0	0	0
Rape	0	0	0	0	0	0	0	0	0
Fondling	0	0	0	0	0	0	0	0	0
Incest	0	0	0	0	0	0	0	0	0
Statutory Rape	0	0	0	0	0	0	0	0	0
Robbery	0	0	0	0	0	0	0	0	0
Aggravated Assault	0	0	0	0	0	0	0	0	0
Burglary	0	0	0	0	0	0	0	0	0
Motor Vehicle Theft	0	0	0	0	0	0	0	0	0
Arson	0	0	0	0	0	0	0	0	0
Simple Assault	0	0	0	0	0	0	0	0	0
Larceny/Theft	0	0	0	0	0	0	0	0	0
Intimidation	0	0	0	0	0	0	0	0	0
Destruction/Damage/Vandalism of Property	0	0	0	0	0	0	0	0	0
HATE CRIMES ON CAMPUS	2021	Race	Religion	Sexual Orientation	Gender	Gender Identity	Disability	Ethnicity	National Origin
Murder/Non-Negligent Manslaughter	0	0	0	0	0	0	0	0	0
Rape	0	0	0	0	0	0	0	0	0
Fondling	0	0	0	0	0	0	0	0	0
Incest	0	0	0	0	0	0	0	0	0
Statutory Rape	0	0	0	0	0	0	0	0	0
Robbery	0	0	0	0	0	0	0	0	0
Aggravated Assault	0	0	0	0	0	0	0	0	0
Burglary	0	0	0	0	0	0	0	0	0
Motor Vehicle Theft	0	0	0	0	0	0	0	0	0

HATE CRIMES ONCAMPUS CON TINUED	2021	Race	Religion	Sexual Orientation	Gender	Gender Identity	Disability	Ethnicity	National Origin
Arson	0	0	0	0	0	0	0	0	0
Simple Assault	0	0	0	0	0	0	0	0	0
Larceny/Theft	0	0	0	0	0	0	0	0	0
Intimidation	0	0	0	0	0	0	0	0	0
Destruction/Damage/Vandalism of Property	0	0	0	0	0	0	0	0	0
HATE CRIMES NONCAMPUS	2021	Race	Religion	Sexual Orientation	Gender	Gender Identity	Disability	Ethnicity	National Origin
Murder/Non-Negligent Manslaughter	0	0	0	0	0	0	0	0	0
Rape	0	0	0	0	0	0	0	0	0
Fondling	0	0	0	0	0	0	0	0	0
Incest	0	0	0	0	0	0	0	0	0
Statutory Rape	0	0	0	0	0	0	0	0	0
Robbery	0	0	0	0	0	0	0	0	0
Aggravated Assault	0	0	0	0	0	0	0	0	0
Burglary	0	0	0	0	0	0	0	0	0
Motor Vehicle Theft	0	0	0	0	0	0	0	0	0
Arson	0	0	0	0	0	0	0	0	0
Simple Assault	0	0	0	0	0	0	0	0	0
Larceny/Theft	0	0	0	0	0	0	0	0	0
Intimidation	0	0	0	0	0	0	0	0	0
Destruction/Damage/Vandalism of Property	0	0	0	0	0	0	0	0	0
HATE CRIMES PUBLIC PROPERTY	2021	Race	Religion	Sexual Orientation	Gender	Gender Identity	Disability	Ethnicity	National Origin
Murder/Non-Negligent Manslaughter	0	0	0	0	0	0	0	0	0
Rape	0	0	0	0	0	0	0	0	0
Fondling	0	0	0	0	0	0	0	0	0
Incest	0	0	0	0	0	0	0	0	0
Statutory Rape	0	0	0	0	0	0	0	0	0
Robbery	0	0	0	0	0	0	0	0	0
Aggravated Assault	0	0	0	0	0	0	0	0	0
Burglary	0	0	0	0	0	0	0	0	0
Motor Vehicle Theft	0	0	0	0	0	0	0	0	0
Arson	0	0	0	0	0	0	0	0	0
Simple Assault	0	0	0	0	0	0	0	0	0
Larceny/Theft	0	0	0	0	0	0	0	0	0
Intimidation	0	0	0	0	0	0	0	0	0
Destruction/Damage/Vandalism of Property	0	0	0	0	0	0	0	0	0
VAWA OFFENSES	On Campus			Noncampus			Public Property		
	2021	2022	2023	2021	2022	2023	2021	2022	2023
Domestic Violence	0	0	0	0	0	0	0	0	0
Dating Violence	0	0	0	0	0	0	0	0	0
Stalking	0	0	0	0	0	0	0	0	0

ARREST	On Campus			Noncampus			Public Property		
	2021	2022	2023	2021	2022	2023	2021	2022	2023
Weapons: Carrying, Possessing, etc.	0	0	0	0	0	0	0	0	0
Drug Abuse Violation	0	0	0	0	0	0	0	0	0
Liquor Law Violations	0	0	0	0	0	0	0	0	0
DISCIPLINARY ACTIONS	On Campus			Noncampus			Public Property		
	2021	2022	2023	2021	2022	2023	2021	2022	2023
Weapons: Carrying, Possessing, etc.	0	0	0	0	0	0	0	0	0
Drug Abuse Violation	0	0	0	0	0	0	0	0	0
Liquor Law Violations	0	0	0	0	0	0	0	0	0
UNFOUNDED CRIMES	2021			2022			2023		
	0			0			0		

FRESNO CAMPUS CLERY MAP (GEOGRAPHY)

The preceding crime statistic tables reflect the mandatory reporting offenses as specified in the Jeanne Clery Act. The tables display crime data over the past three calendar years and are separated by crimes occurring in four different geographical locations: 1. On Campus – the main core campus 2. Non-Campus - crimes occurring off of campus property, and 3. Public Property - crimes occurring on the borders of the Campus.



NORTH AVE CRIME STATISTICS

The following criminal offenses occurred during the calendar years listed.

CRIMINAL OFFENSES	On Campus			Noncampus			Public Property		
	2021	2022	2023	2021	2022	2023	2021	2022	2023
Murder/Non-Negligent Manslaughter	0	0	0	0	0	0	0	0	0
Manslaughter by Negligence	0	0	0	0	0	0	0	0	0
Rape	0	0	0	0	0	0	0	0	0
Fondling	0	0	0	0	0	0	0	0	0
Incest	0	0	0	0	0	0	0	0	0
Statutory Rape	0	0	0	0	0	0	0	0	0
Robbery	0	0	0	0	0	0	0	0	0
Aggravated Assault	0	0	0	0	0	0	0	0	0
Burglary	0	0	0	0	0	0	0	0	0
Motor Vehicle Theft	0	0	0	0	0	0	0	0	0
Arson	0	0	0	0	0	0	0	0	0
HATE CRIMES ON CAMPUS	2023	Race	Religion	Sexual Orientation	Gender	Gender Identity	Disability	Ethnicity	National Origin
Murder/Non-Negligent Manslaughter	0	0	0	0	0	0	0	0	0
Rape	0	0	0	0	0	0	0	0	0
Fondling	0	0	0	0	0	0	0	0	0
Incest	0	0	0	0	0	0	0	0	0
Statutory Rape	0	0	0	0	0	0	0	0	0
Robbery	0	0	0	0	0	0	0	0	0
Aggravated Assault	0	0	0	0	0	0	0	0	0
Burglary	0	0	0	0	0	0	0	0	0
Motor Vehicle Theft	0	0	0	0	0	0	0	0	0
Arson	0	0	0	0	0	0	0	0	0
Simple Assault	0	0	0	0	0	0	0	0	0
Larceny/Theft	0	0	0	0	0	0	0	0	0
Intimidation	0	0	0	0	0	0	0	0	0
Destruction/Damage/Vandalism of Property	0	0	0	0	0	0	0	0	0
HATE CRIMES NONCAMPUS	2023	Race	Religion	Sexual Orientation	Gender	Gender Identity	Disability	Ethnicity	National Origin
Murder/Non-Negligent Manslaughter	0	0	0	0	0	0	0	0	0
Rape	0	0	0	0	0	0	0	0	0
Fondling	0	0	0	0	0	0	0	0	0
Incest	0	0	0	0	0	0	0	0	0
Statutory Rape	0	0	0	0	0	0	0	0	0
Robbery	0	0	0	0	0	0	0	0	0
Aggravated Assault	0	0	0	0	0	0	0	0	0
Burglary	0	0	0	0	0	0	0	0	0

HATE CRIMES NONCAMPUS CONTINUED	2023	Race	Religion	Sexual Orientation	Gender	Gender Identity	Disability	Ethnicity	National Origin
Motor Vehicle Theft	0	0	0	0	0	0	0	0	0
Arson	0	0	0	0	0	0	0	0	0
Simple Assault	0	0	0	0	0	0	0	0	0
Larceny/Theft	0	0	0	0	0	0	0	0	0
Intimidation	0	0	0	0	0	0	0	0	0
Destruction/Damage/Vandalism of Property	0	0	0	0	0	0	0	0	0
HATE CRIMES PUBLIC PROPERTY	2023	Race	Religion	Sexual Orientation	Gender	Gender Identity	Disability	Ethnicity	National Origin
Murder/Non-Negligent Manslaughter	0	0	0	0	0	0	0	0	0
Rape	0	0	0	0	0	0	0	0	0
Fondling	0	0	0	0	0	0	0	0	0
Incest	0	0	0	0	0	0	0	0	0
Statutory Rape	0	0	0	0	0	0	0	0	0
Robbery	0	0	0	0	0	0	0	0	0
Aggravated Assault	0	0	0	0	0	0	0	0	0
Burglary	0	0	0	0	0	0	0	0	0
Motor Vehicle Theft	0	0	0	0	0	0	0	0	0
Arson	0	0	0	0	0	0	0	0	0
Simple Assault	0	0	0	0	0	0	0	0	0
Larceny/Theft	0	0	0	0	0	0	0	0	0
Intimidation	0	0	0	0	0	0	0	0	0
Destruction/Damage/Vandalism of Property	0	0	0	0	0	0	0	0	0
HATE CRIMES ON CAMPUS	2022	Race	Religion	Sexual Orientation	Gender	Gender Identity	Disability	Ethnicity	National Origin
Murder/Non-Negligent Manslaughter	0	0	0	0	0	0	0	0	0
Rape	0	0	0	0	0	0	0	0	0
Fondling	0	0	0	0	0	0	0	0	0
Incest	0	0	0	0	0	0	0	0	0
Statutory Rape	0	0	0	0	0	0	0	0	0
Robbery	0	0	0	0	0	0	0	0	0
Aggravated Assault	0	0	0	0	0	0	0	0	0
Burglary	0	0	0	0	0	0	0	0	0
Motor Vehicle Theft	0	0	0	0	0	0	0	0	0
Arson	0	0	0	0	0	0	0	0	0
Simple Assault	0	0	0	0	0	0	0	0	0
Larceny/Theft	0	0	0	0	0	0	0	0	0
Intimidation	0	0	0	0	0	0	0	0	0
Destruction/Damage/Vandalism of Property	0	0	0	0	0	0	0	0	0

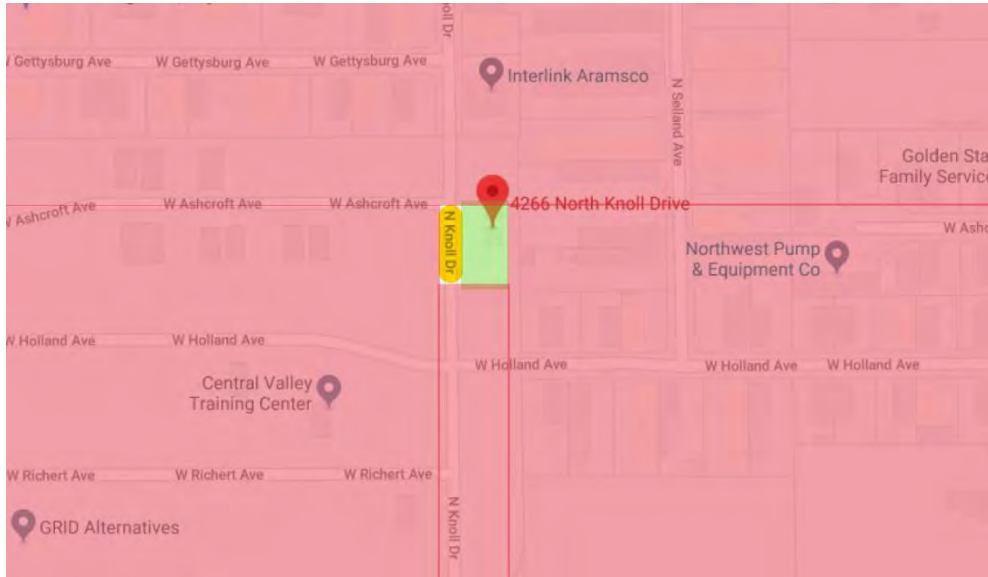
HATE CRIMES NONCAMPUS	2022	Race	Religion	Sexual Orientation	Gender	Gender Identity	Disability	Ethnicity	National Origin
Murder/Non-Negligent Manslaughter	0	0	0	0	0	0	0	0	0
Rape	0	0	0	0	0	0	0	0	0
Fondling	0	0	0	0	0	0	0	0	0
Incest	0	0	0	0	0	0	0	0	0
Statutory Rape	0	0	0	0	0	0	0	0	0
Robbery	0	0	0	0	0	0	0	0	0
Aggravated Assault	0	0	0	0	0	0	0	0	0
Burglary	0	0	0	0	0	0	0	0	0
HATE CRIMES NONCAMPUS CONTINUED	2022	Race	Religion	Sexual Orientation	Gender	Gender Identity	Disability	Ethnicity	National Origin
Motor Vehicle Theft	0	0	0	0	0	0	0	0	0
Arson	0	0	0	0	0	0	0	0	0
Simple Assault	0	0	0	0	0	0	0	0	0
Larceny/Theft	0	0	0	0	0	0	0	0	0
Intimidation	0	0	0	0	0	0	0	0	0
Destruction/Damage/Vandalism of Property	0	0	0	0	0	0	0	0	0
HATE CRIMES PUBLIC PROPERTY	2022	Race	Religion	Sexual Orientation	Gender	Gender Identity	Disability	Ethnicity	National Origin
Murder/Non-Negligent Manslaughter	0	0	0	0	0	0	0	0	0
Rape	0	0	0	0	0	0	0	0	0
Fondling	0	0	0	0	0	0	0	0	0
Incest	0	0	0	0	0	0	0	0	0
Statutory Rape	0	0	0	0	0	0	0	0	0
Robbery	0	0	0	0	0	0	0	0	0
Aggravated Assault	0	0	0	0	0	0	0	0	0
Burglary	0	0	0	0	0	0	0	0	0
Motor Vehicle Theft	0	0	0	0	0	0	0	0	0
Arson	0	0	0	0	0	0	0	0	0
Simple Assault	0	0	0	0	0	0	0	0	0
Larceny/Theft	0	0	0	0	0	0	0	0	0
Intimidation	0	0	0	0	0	0	0	0	0
Destruction/Damage/Vandalism of Property	0	0	0	0	0	0	0	0	0
HATE CRIMES ON CAMPUS	2021	Race	Religion	Sexual Orientation	Gender	Gender Identity	Disability	Ethnicity	National Origin
Murder/Non-Negligent Manslaughter	0	0	0	0	0	0	0	0	0
Rape	0	0	0	0	0	0	0	0	0
Fondling	0	0	0	0	0	0	0	0	0
Incest	0	0	0	0	0	0	0	0	0
Statutory Rape	0	0	0	0	0	0	0	0	0
Robbery	0	0	0	0	0	0	0	0	0
Aggravated Assault	0	0	0	0	0	0	0	0	0
Burglary	0	0	0	0	0	0	0	0	0
Motor Vehicle Theft	0	0	0	0	0	0	0	0	0

HATE CRIMES ONCAMPUS CON TINUED	2021	Race	Religion	Sexual Orientation	Gender	Gender Identity	Disability	Ethnicity	National Origin
Arson	0	0	0	0	0	0	0	0	0
Simple Assault	0	0	0	0	0	0	0	0	0
Larceny/Theft	0	0	0	0	0	0	0	0	0
Intimidation	0	0	0	0	0	0	0	0	0
Destruction/Damage/Vandalism of Property	0	0	0	0	0	0	0	0	0
HATE CRIMES NONCAMPUS	2021	Race	Religion	Sexual Orientation	Gender	Gender Identity	Disability	Ethnicity	National Origin
Murder/Non-Negligent Manslaughter	0	0	0	0	0	0	0	0	0
Rape	0	0	0	0	0	0	0	0	0
Fondling	0	0	0	0	0	0	0	0	0
Incest	0	0	0	0	0	0	0	0	0
Statutory Rape	0	0	0	0	0	0	0	0	0
Robbery	0	0	0	0	0	0	0	0	0
Aggravated Assault	0	0	0	0	0	0	0	0	0
Burglary	0	0	0	0	0	0	0	0	0
Motor Vehicle Theft	0	0	0	0	0	0	0	0	0
Arson	0	0	0	0	0	0	0	0	0
Simple Assault	0	0	0	0	0	0	0	0	0
Larceny/Theft	0	0	0	0	0	0	0	0	0
Intimidation	0	0	0	0	0	0	0	0	0
Destruction/Damage/Vandalism of Property	0	0	0	0	0	0	0	0	0
HATE CRIMES PUBLIC PROPERTY	2021	Race	Religion	Sexual Orientation	Gender	Gender Identity	Disability	Ethnicity	National Origin
Murder/Non-Negligent Manslaughter	0	0	0	0	0	0	0	0	0
Rape	0	0	0	0	0	0	0	0	0
Fondling	0	0	0	0	0	0	0	0	0
Incest	0	0	0	0	0	0	0	0	0
Statutory Rape	0	0	0	0	0	0	0	0	0
Robbery	0	0	0	0	0	0	0	0	0
Aggravated Assault	0	0	0	0	0	0	0	0	0
Burglary	0	0	0	0	0	0	0	0	0
Motor Vehicle Theft	0	0	0	0	0	0	0	0	0
Arson	0	0	0	0	0	0	0	0	0
Simple Assault	0	0	0	0	0	0	0	0	0
Larceny/Theft	0	0	0	0	0	0	0	0	0
Intimidation	0	0	0	0	0	0	0	0	0
Destruction/Damage/Vandalism of Property	0	0	0	0	0	0	0	0	0
VAWA OFFENSES	On Campus			Noncampus			Public Property		
	2021	2022	2023	2021	2022	2023	2021	2022	2023
Domestic Violence	0	0	0	0	0	0	0	0	0
Dating Violence	0	0	0	0	0	0	0	0	0
Stalking	0	0	0	0	0	0	0	0	0

ARREST	On Campus			Noncampus			Public Property		
	2021	2022	2023	2021	2022	2023	2021	2022	2023
Weapons: Carrying, Possessing, etc.	0	0	0	0	0	0	0	0	0
Drug Abuse Violation	0	0	0	0	0	0	0	0	0
Liquor Law Violations	0	0	0	0	0	0	0	0	0
DISCIPLINARY ACTIONS	On Campus			Noncampus			Public Property		
	2021	2022	2023	2021	2022	2023	2021	2022	2023
Weapons: Carrying, Possessing, etc.	0	0	0	0	0	0	0	0	0
Drug Abuse Violation	0	0	0	0	0	0	0	0	0
Liquor Law Violations	0	0	0	0	0	0	0	0	0
UNFOUNDED CRIMES	2021			2022			2023		
	0			0			0		

NORTH AVE CAMPUS CLERY MAP (GEOGRAPHY)

The preceding crime statistic tables reflect the mandatory reporting offenses as specified in the Jeanne Clery Act. The tables display crime data over the past three calendar years and are separated by crimes occurring in four different geographical locations: 1. On Campus – the main core campus 2. Non-Campus - crimes occurring off of campus property, and 3. Public Property - crimes occurring on the borders of the Campus.



- Public Property
- On Campus
- NonCampus

MERCED CAMPUS CRIME STATISTICS

The following criminal offenses occurred during the calendar years listed.

CRIMINAL OFFENSES	On Campus			Noncampus			Public Property		
	2021	2022	2023	2021	2022	2023	2021	2022	2023
Murder/Non-Negligent Manslaughter	0	0	0	0	0	0	0	0	0
Manslaughter by Negligence	0	0	0	0	0	0	0	0	0
Rape	0	0	0	0	0	0	0	0	0
Fondling	0	0	0	0	0	0	0	0	0
Incest	0	0	0	0	0	0	0	0	0
Statutory Rape	0	0	0	0	0	0	0	0	0
Robbery	0	0	0	0	0	0	0	0	0
Aggravated Assault	0	0	0	0	0	0	0	0	0
Burglary	0	0	0	0	0	0	0	0	0
Motor Vehicle Theft	0	0	0	0	0	0	0	0	0
Arson	0	0	0	0	0	0	0	0	0
HATE CRIMES ON CAMPUS	2023	Race	Religion	Sexual Orientation	Gender	Gender Identity	Disability	Ethnicity	National Origin
Murder/Non-Negligent Manslaughter	0	0	0	0	0	0	0	0	0
Rape	0	0	0	0	0	0	0	0	0
Fondling	0	0	0	0	0	0	0	0	0
Incest	0	0	0	0	0	0	0	0	0
Statutory Rape	0	0	0	0	0	0	0	0	0
Robbery	0	0	0	0	0	0	0	0	0
Aggravated Assault	0	0	0	0	0	0	0	0	0
Burglary	0	0	0	0	0	0	0	0	0
Motor Vehicle Theft	0	0	0	0	0	0	0	0	0
Arson	0	0	0	0	0	0	0	0	0
Simple Assault	0	0	0	0	0	0	0	0	0
Larceny/Theft	0	0	0	0	0	0	0	0	0
Intimidation	0	0	0	0	0	0	0	0	0
Destruction/Damage/Vandalism of Property	0	0	0	0	0	0	0	0	0
HATE CRIMES NONCAMPUS	2023	Race	Religion	Sexual Orientation	Gender	Gender Identity	Disability	Ethnicity	National Origin
Murder/Non-Negligent Manslaughter	0	0	0	0	0	0	0	0	0
Rape	0	0	0	0	0	0	0	0	0
Fondling	0	0	0	0	0	0	0	0	0
Incest	0	0	0	0	0	0	0	0	0
Statutory Rape	0	0	0	0	0	0	0	0	0
Robbery	0	0	0	0	0	0	0	0	0
Aggravated Assault	0	0	0	0	0	0	0	0	0
Burglary	0	0	0	0	0	0	0	0	0

HATE CRIMES NONCAMPUS CONTINUED	2023	Race	Religion	Sexual Orientation	Gender	Gender Identity	Disability	Ethnicity	National Origin
Motor Vehicle Theft	0	0	0	0	0	0	0	0	0
Arson	0	0	0	0	0	0	0	0	0
Simple Assault	0	0	0	0	0	0	0	0	0
Larceny/Theft	0	0	0	0	0	0	0	0	0
Intimidation	0	0	0	0	0	0	0	0	0
Destruction/Damage/Vandalism of Property	0	0	0	0	0	0	0	0	0
HATE CRIMES PUBLIC PROPERTY	2023	Race	Religion	Sexual Orientation	Gender	Gender Identity	Disability	Ethnicity	National Origin
Murder/Non-Negligent Manslaughter	0	0	0	0	0	0	0	0	0
Rape	0	0	0	0	0	0	0	0	0
Fondling	0	0	0	0	0	0	0	0	0
Incest	0	0	0	0	0	0	0	0	0
Statutory Rape	0	0	0	0	0	0	0	0	0
Robbery	0	0	0	0	0	0	0	0	0
Aggravated Assault	0	0	0	0	0	0	0	0	0
Burglary	0	0	0	0	0	0	0	0	0
Motor Vehicle Theft	0	0	0	0	0	0	0	0	0
Arson	0	0	0	0	0	0	0	0	0
Simple Assault	0	0	0	0	0	0	0	0	0
Larceny/Theft	0	0	0	0	0	0	0	0	0
Intimidation	0	0	0	0	0	0	0	0	0
Destruction/Damage/Vandalism of Property	0	0	0	0	0	0	0	0	0
HATE CRIMES ON CAMPUS	2022	Race	Religion	Sexual Orientation	Gender	Gender Identity	Disability	Ethnicity	National Origin
Murder/Non-Negligent Manslaughter	0	0	0	0	0	0	0	0	0
Rape	0	0	0	0	0	0	0	0	0
Fondling	0	0	0	0	0	0	0	0	0
Incest	0	0	0	0	0	0	0	0	0
Statutory Rape	0	0	0	0	0	0	0	0	0
Robbery	0	0	0	0	0	0	0	0	0
Aggravated Assault	0	0	0	0	0	0	0	0	0
Burglary	0	0	0	0	0	0	0	0	0
Motor Vehicle Theft	0	0	0	0	0	0	0	0	0
Arson	0	0	0	0	0	0	0	0	0
Simple Assault	0	0	0	0	0	0	0	0	0
Larceny/Theft	0	0	0	0	0	0	0	0	0
Intimidation	0	0	0	0	0	0	0	0	0
Destruction/Damage/Vandalism of Property	0	0	0	0	0	0	0	0	0

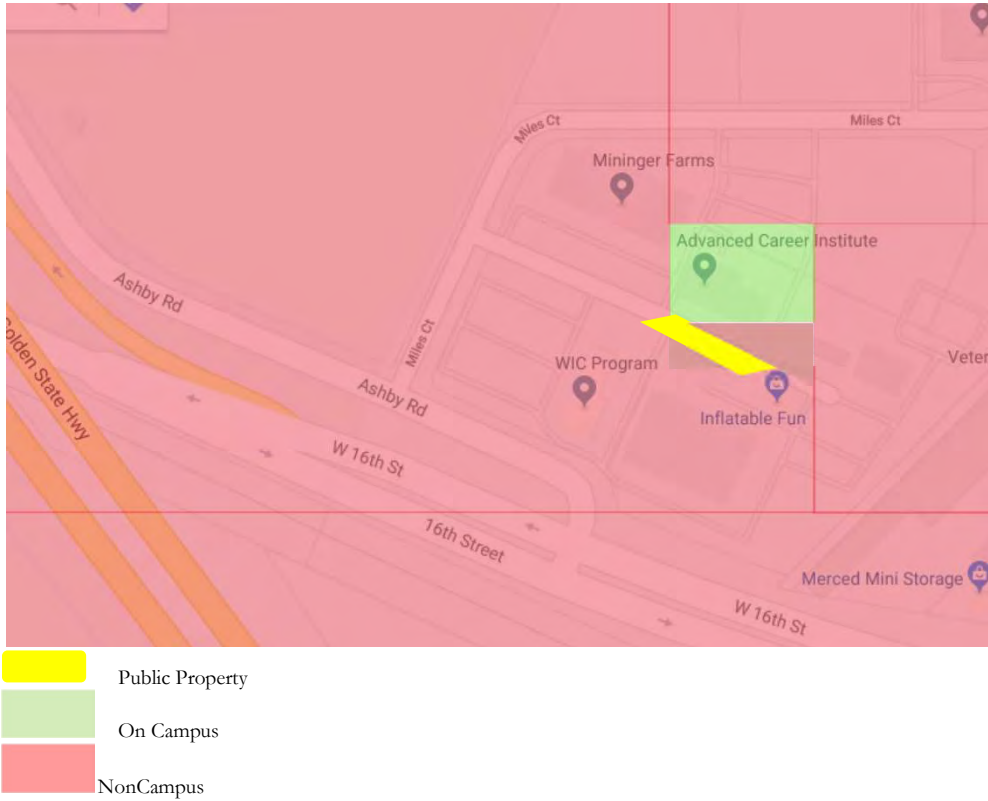
HATE CRIMES NONCAMPUS	2022	Race	Religion	Sexual Orientation	Gender	Gender Identity	Disability	Ethnicity	National Origin
Murder/Non-Negligent Manslaughter	0	0	0	0	0	0	0	0	0
Rape	0	0	0	0	0	0	0	0	0
Fondling	0	0	0	0	0	0	0	0	0
Incest	0	0	0	0	0	0	0	0	0
Statutory Rape	0	0	0	0	0	0	0	0	0
Robbery	0	0	0	0	0	0	0	0	0
Aggravated Assault	0	0	0	0	0	0	0	0	0
Burglary	0	0	0	0	0	0	0	0	0
HATE CRIMES NONCAMPUS CONTINUED	2022	Race	Religion	Sexual Orientation	Gender	Gender Identity	Disability	Ethnicity	National Origin
Motor Vehicle Theft	0	0	0	0	0	0	0	0	0
Arson	0	0	0	0	0	0	0	0	0
Simple Assault	0	0	0	0	0	0	0	0	0
Larceny/Theft	0	0	0	0	0	0	0	0	0
Intimidation	0	0	0	0	0	0	0	0	0
Destruction/Damage/Vandalism of Property	0	0	0	0	0	0	0	0	0
HATE CRIMES PUBLIC PROPERTY	2022	Race	Religion	Sexual Orientation	Gender	Gender Identity	Disability	Ethnicity	National Origin
Murder/Non-Negligent Manslaughter	0	0	0	0	0	0	0	0	0
Rape	0	0	0	0	0	0	0	0	0
Fondling	0	0	0	0	0	0	0	0	0
Incest	0	0	0	0	0	0	0	0	0
Statutory Rape	0	0	0	0	0	0	0	0	0
Robbery	0	0	0	0	0	0	0	0	0
Aggravated Assault	0	0	0	0	0	0	0	0	0
Burglary	0	0	0	0	0	0	0	0	0
Motor Vehicle Theft	0	0	0	0	0	0	0	0	0
Arson	0	0	0	0	0	0	0	0	0
Simple Assault	0	0	0	0	0	0	0	0	0
Larceny/Theft	0	0	0	0	0	0	0	0	0
Intimidation	0	0	0	0	0	0	0	0	0
Destruction/Damage/Vandalism of Property	0	0	0	0	0	0	0	0	0
HATE CRIMES ON CAMPUS	2021	Race	Religion	Sexual Orientation	Gender	Gender Identity	Disability	Ethnicity	National Origin
Murder/Non-Negligent Manslaughter	0	0	0	0	0	0	0	0	0
Rape	0	0	0	0	0	0	0	0	0
Fondling	0	0	0	0	0	0	0	0	0
Incest	0	0	0	0	0	0	0	0	0
Statutory Rape	0	0	0	0	0	0	0	0	0
Robbery	0	0	0	0	0	0	0	0	0
Aggravated Assault	0	0	0	0	0	0	0	0	0
Burglary	0	0	0	0	0	0	0	0	0
Motor Vehicle Theft	0	0	0	0	0	0	0	0	0

HATE CRIMES ONCAMPUS CON TINUED	2021	Race	Religion	Sexual Orientation	Gender	Gender Identity	Disability	Ethnicity	National Origin
Arson	0	0	0	0	0	0	0	0	0
Simple Assault	0	0	0	0	0	0	0	0	0
Larceny/Theft	0	0	0	0	0	0	0	0	0
Intimidation	0	0	0	0	0	0	0	0	0
Destruction/Damage/Vandalism of Property	0	0	0	0	0	0	0	0	0
HATE CRIMES NONCAMPUS	2021	Race	Religion	Sexual Orientation	Gender	Gender Identity	Disability	Ethnicity	National Origin
Murder/Non-Negligent Manslaughter	0	0	0	0	0	0	0	0	0
Rape	0	0	0	0	0	0	0	0	0
Fondling	0	0	0	0	0	0	0	0	0
Incest	0	0	0	0	0	0	0	0	0
Statutory Rape	0	0	0	0	0	0	0	0	0
Robbery	0	0	0	0	0	0	0	0	0
Aggravated Assault	0	0	0	0	0	0	0	0	0
Burglary	0	0	0	0	0	0	0	0	0
Motor Vehicle Theft	0	0	0	0	0	0	0	0	0
Arson	0	0	0	0	0	0	0	0	0
Simple Assault	0	0	0	0	0	0	0	0	0
Larceny/Theft	0	0	0	0	0	0	0	0	0
Intimidation	0	0	0	0	0	0	0	0	0
Destruction/Damage/Vandalism of Property	0	0	0	0	0	0	0	0	0
HATE CRIMES PUBLIC PROPERTY	2021	Race	Religion	Sexual Orientation	Gender	Gender Identity	Disability	Ethnicity	National Origin
Murder/Non-Negligent Manslaughter	0	0	0	0	0	0	0	0	0
Rape	0	0	0	0	0	0	0	0	0
Fondling	0	0	0	0	0	0	0	0	0
Incest	0	0	0	0	0	0	0	0	0
Statutory Rape	0	0	0	0	0	0	0	0	0
Robbery	0	0	0	0	0	0	0	0	0
Aggravated Assault	0	0	0	0	0	0	0	0	0
Burglary	0	0	0	0	0	0	0	0	0
Motor Vehicle Theft	0	0	0	0	0	0	0	0	0
Arson	0	0	0	0	0	0	0	0	0
Simple Assault	0	0	0	0	0	0	0	0	0
Larceny/Theft	0	0	0	0	0	0	0	0	0
Intimidation	0	0	0	0	0	0	0	0	0
Destruction/Damage/Vandalism of Property	0	0	0	0	0	0	0	0	0
VAWA OFFENSES	On Campus			Noncampus			Public Property		
	2021	2022	2023	2021	2022	2023	2021	2022	2023
Domestic Violence	0	0	0	0	0	0	0	0	0
Dating Violence	0	0	0	0	0	0	0	0	0
Stalking	0	0	0	0	0	0	0	0	0

ARREST	On Campus			Noncampus			Public Property		
	2021	2022	2023	2021	2022	2023	2021	2022	2023
Weapons: Carrying, Possessing, etc.	0	0	0	0	0	0	0	0	0
Drug Abuse Violation	0	0	0	0	0	0	0	0	0
Liquor Law Violations	0	0	0	0	0	0	0	0	0
DISCIPLINARY ACTIONS	On Campus			Noncampus			Public Property		
	2021	2022	2023	2021	2022	2023	2021	2022	2023
Weapons: Carrying, Possessing, etc.	0	0	0	0	0	0	0	0	0
Drug Abuse Violation	0	0	0	0	0	0	0	0	0
Liquor Law Violations	0	0	0	0	0	0	0	0	0
UNFOUNDED CRIMES	2021			2022			2023		
	0			0			0		

MERCED CAMPUS CLERY MAP (GEOGRAPHY)

The preceding crime statistic tables reflect the mandatory reporting offenses as specified in the Jeanne Clery Act. The tables display crime data over the past three calendar years and are separated by crimes occurring in four different geographical locations: 1. On Campus – the main core campus 2. Non-Campus - crimes occurring off of campus property, and 3. Public Property - crimes occurring on the borders of the Campus.



BAKERSFIELD CAMPUS CRIME STATISTICS

The following criminal offenses occurred during the calendar years listed.

CRIMINAL OFFENSES	On Campus			Noncampus			Public Property		
	2021	2022	2023	2021	2022	2023	2021	2022	2023
Murder/Non-Negligent Manslaughter	0	0	0	0	0	0	0	0	0
Manslaughter by Negligence	0	0	0	0	0	0	0	0	0
Rape	0	0	0	0	0	0	0	0	0
Fondling	0	0	0	0	0	0	0	0	0
Incest	0	0	0	0	0	0	0	0	0
Statutory Rape	0	0	0	0	0	0	0	0	0
Robbery	0	0	0	0	0	0	0	0	0
Aggravated Assault	0	0	0	0	0	0	0	0	0
Burglary	0	0	0	0	0	0	0	0	0
Motor Vehicle Theft	0	0	0	0	0	0	0	0	0
Arson	0	0	0	0	0	0	0	0	0
HATE CRIMES ON CAMPUS	2023	Race	Religion	Sexual Orientation	Gender	Gender Identity	Disability	Ethnicity	National Origin
Murder/Non-Negligent Manslaughter	0	0	0	0	0	0	0	0	0
Rape	0	0	0	0	0	0	0	0	0
Fondling	0	0	0	0	0	0	0	0	0
Incest	0	0	0	0	0	0	0	0	0
Statutory Rape	0	0	0	0	0	0	0	0	0
Robbery	0	0	0	0	0	0	0	0	0
Aggravated Assault	0	0	0	0	0	0	0	0	0
Burglary	0	0	0	0	0	0	0	0	0
Motor Vehicle Theft	0	0	0	0	0	0	0	0	0
Arson	0	0	0	0	0	0	0	0	0
Simple Assault	0	0	0	0	0	0	0	0	0
Larceny/Theft	0	0	0	0	0	0	0	0	0
Intimidation	0	0	0	0	0	0	0	0	0
Destruction/Damage/Vandalism of Property	0	0	0	0	0	0	0	0	0
HATE CRIMES NONCAMPUS	2023	Race	Religion	Sexual Orientation	Gender	Gender Identity	Disability	Ethnicity	National Origin
Murder/Non-Negligent Manslaughter	0	0	0	0	0	0	0	0	0
Rape	0	0	0	0	0	0	0	0	0
Fondling	0	0	0	0	0	0	0	0	0
Incest	0	0	0	0	0	0	0	0	0
Statutory Rape	0	0	0	0	0	0	0	0	0
Robbery	0	0	0	0	0	0	0	0	0
Aggravated Assault	0	0	0	0	0	0	0	0	0
Burglary	0	0	0	0	0	0	0	0	0

HATE CRIMES NONCAMPUS CONTINUED	2023	Race	Religion	Sexual Orientation	Gender	Gender Identity	Disability	Ethnicity	National Origin
Motor Vehicle Theft	0	0	0	0	0	0	0	0	0
Arson	0	0	0	0	0	0	0	0	0
Simple Assault	0	0	0	0	0	0	0	0	0
Larceny/Theft	0	0	0	0	0	0	0	0	0
Intimidation	0	0	0	0	0	0	0	0	0
Destruction/Damage/Vandalism of Property	0	0	0	0	0	0	0	0	0
HATE CRIMES PUBLIC PROPERTY	2023	Race	Religion	Sexual Orientation	Gender	Gender Identity	Disability	Ethnicity	National Origin
Murder/Non-Negligent Manslaughter	0	0	0	0	0	0	0	0	0
Rape	0	0	0	0	0	0	0	0	0
Fondling	0	0	0	0	0	0	0	0	0
Incest	0	0	0	0	0	0	0	0	0
Statutory Rape	0	0	0	0	0	0	0	0	0
Robbery	0	0	0	0	0	0	0	0	0
Aggravated Assault	0	0	0	0	0	0	0	0	0
Burglary	0	0	0	0	0	0	0	0	0
Motor Vehicle Theft	0	0	0	0	0	0	0	0	0
Arson	0	0	0	0	0	0	0	0	0
Simple Assault	0	0	0	0	0	0	0	0	0
Larceny/Theft	0	0	0	0	0	0	0	0	0
Intimidation	0	0	0	0	0	0	0	0	0
Destruction/Damage/Vandalism of Property	0	0	0	0	0	0	0	0	0
HATE CRIMES ON CAMPUS	2022	Race	Religion	Sexual Orientation	Gender	Gender Identity	Disability	Ethnicity	National Origin
Murder/Non-Negligent Manslaughter	0	0	0	0	0	0	0	0	0
Rape	0	0	0	0	0	0	0	0	0
Fondling	0	0	0	0	0	0	0	0	0
Incest	0	0	0	0	0	0	0	0	0
Statutory Rape	0	0	0	0	0	0	0	0	0
Robbery	0	0	0	0	0	0	0	0	0
Aggravated Assault	0	0	0	0	0	0	0	0	0
Burglary	0	0	0	0	0	0	0	0	0
Motor Vehicle Theft	0	0	0	0	0	0	0	0	0
Arson	0	0	0	0	0	0	0	0	0
Simple Assault	0	0	0	0	0	0	0	0	0
Larceny/Theft	0	0	0	0	0	0	0	0	0
Intimidation	0	0	0	0	0	0	0	0	0
Destruction/Damage/Vandalism of Property	0	0	0	0	0	0	0	0	0

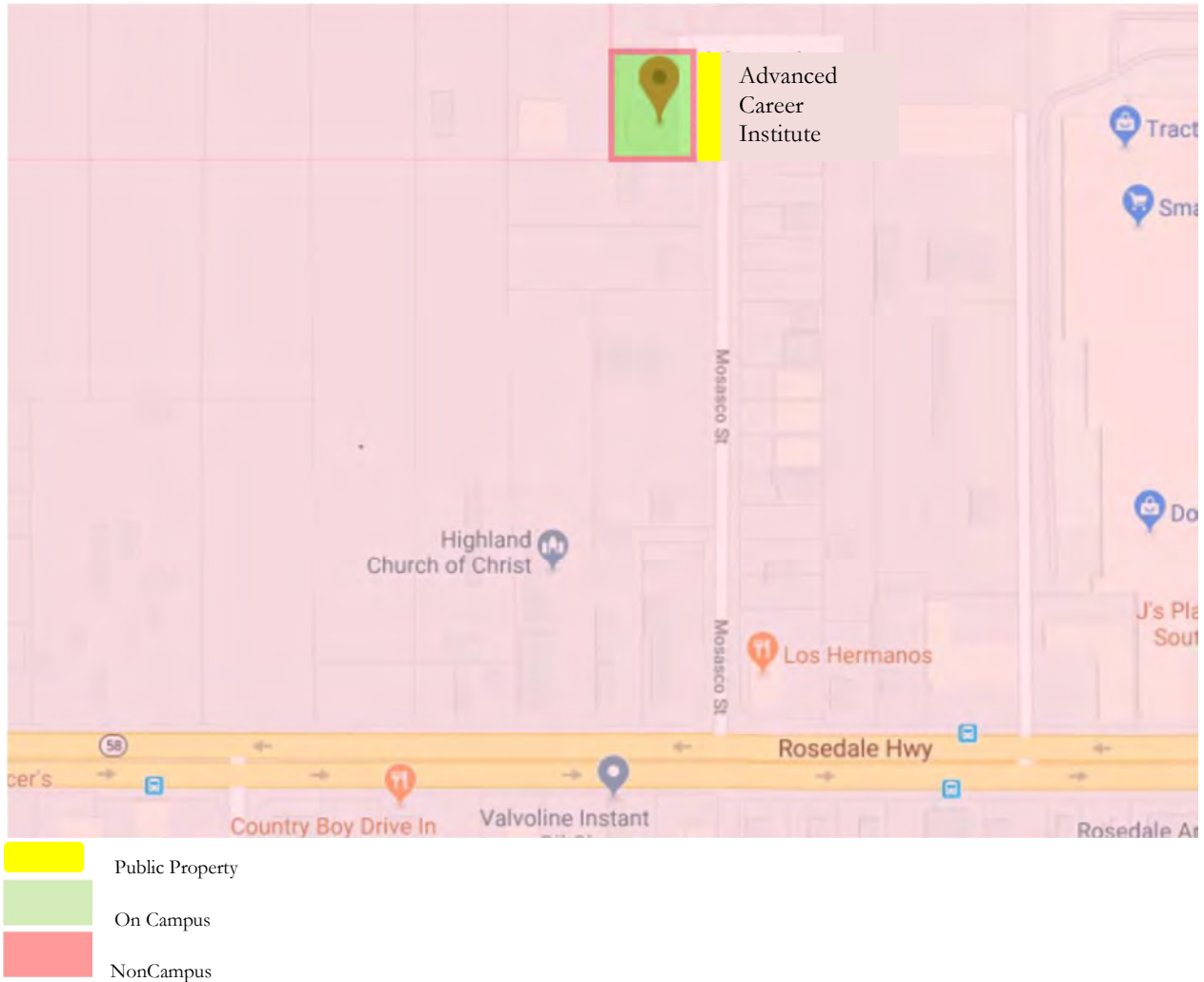
HATE CRIMES NONCAMPUS	2022	Race	Religion	Sexual Orientation	Gender	Gender Identity	Disability	Ethnicity	National Origin
Murder/Non-Negligent Manslaughter	0	0	0	0	0	0	0	0	0
Rape	0	0	0	0	0	0	0	0	0
Fondling	0	0	0	0	0	0	0	0	0
Incest	0	0	0	0	0	0	0	0	0
Statutory Rape	0	0	0	0	0	0	0	0	0
Robbery	0	0	0	0	0	0	0	0	0
Aggravated Assault	0	0	0	0	0	0	0	0	0
Burglary	0	0	0	0	0	0	0	0	0
HATE CRIMES NONCAMPUS CONTINUED	2022	Race	Religion	Sexual Orientation	Gender	Gender Identity	Disability	Ethnicity	National Origin
Motor Vehicle Theft	0	0	0	0	0	0	0	0	0
Arson	0	0	0	0	0	0	0	0	0
Simple Assault	0	0	0	0	0	0	0	0	0
Larceny/Theft	0	0	0	0	0	0	0	0	0
Intimidation	0	0	0	0	0	0	0	0	0
Destruction/Damage/Vandalism of Property	0	0	0	0	0	0	0	0	0
HATE CRIMES PUBLIC PROPERTY	2022	Race	Religion	Sexual Orientation	Gender	Gender Identity	Disability	Ethnicity	National Origin
Murder/Non-Negligent Manslaughter	0	0	0	0	0	0	0	0	0
Rape	0	0	0	0	0	0	0	0	0
Fondling	0	0	0	0	0	0	0	0	0
Incest	0	0	0	0	0	0	0	0	0
Statutory Rape	0	0	0	0	0	0	0	0	0
Robbery	0	0	0	0	0	0	0	0	0
Aggravated Assault	0	0	0	0	0	0	0	0	0
Burglary	0	0	0	0	0	0	0	0	0
Motor Vehicle Theft	0	0	0	0	0	0	0	0	0
Arson	0	0	0	0	0	0	0	0	0
Simple Assault	0	0	0	0	0	0	0	0	0
Larceny/Theft	0	0	0	0	0	0	0	0	0
Intimidation	0	0	0	0	0	0	0	0	0
Destruction/Damage/Vandalism of Property	0	0	0	0	0	0	0	0	0
HATE CRIMES ON CAMPUS	2021	Race	Religion	Sexual Orientation	Gender	Gender Identity	Disability	Ethnicity	National Origin
Murder/Non-Negligent Manslaughter	0	0	0	0	0	0	0	0	0
Rape	0	0	0	0	0	0	0	0	0
Fondling	0	0	0	0	0	0	0	0	0
Incest	0	0	0	0	0	0	0	0	0
Statutory Rape	0	0	0	0	0	0	0	0	0
Robbery	0	0	0	0	0	0	0	0	0
Aggravated Assault	0	0	0	0	0	0	0	0	0
Burglary	0	0	0	0	0	0	0	0	0
Motor Vehicle Theft	0	0	0	0	0	0	0	0	0

HATE CRIMES ONCAMPUS CON TINUED	2021	Race	Religion	Sexual Orientation	Gender	Gender Identity	Disability	Ethnicity	National Origin
Arson	0	0	0	0	0	0	0	0	0
Simple Assault	0	0	0	0	0	0	0	0	0
Larceny/Theft	0	0	0	0	0	0	0	0	0
Intimidation	0	0	0	0	0	0	0	0	0
Destruction/Damage/Vandalism of Property	0	0	0	0	0	0	0	0	0
HATE CRIMES NONCAMPUS	2021	Race	Religion	Sexual Orientation	Gender	Gender Identity	Disability	Ethnicity	National Origin
Murder/Non-Negligent Manslaughter	0	0	0	0	0	0	0	0	0
Rape	0	0	0	0	0	0	0	0	0
Fondling	0	0	0	0	0	0	0	0	0
Incest	0	0	0	0	0	0	0	0	0
Statutory Rape	0	0	0	0	0	0	0	0	0
Robbery	0	0	0	0	0	0	0	0	0
Aggravated Assault	0	0	0	0	0	0	0	0	0
Burglary	0	0	0	0	0	0	0	0	0
Motor Vehicle Theft	0	0	0	0	0	0	0	0	0
Arson	0	0	0	0	0	0	0	0	0
Simple Assault	0	0	0	0	0	0	0	0	0
Larceny/Theft	0	0	0	0	0	0	0	0	0
Intimidation	0	0	0	0	0	0	0	0	0
Destruction/Damage/Vandalism of Property	0	0	0	0	0	0	0	0	0
HATE CRIMES PUBLIC PROPERTY	2021	Race	Religion	Sexual Orientation	Gender	Gender Identity	Disability	Ethnicity	National Origin
Murder/Non-Negligent Manslaughter	0	0	0	0	0	0	0	0	0
Rape	0	0	0	0	0	0	0	0	0
Fondling	0	0	0	0	0	0	0	0	0
Incest	0	0	0	0	0	0	0	0	0
Statutory Rape	0	0	0	0	0	0	0	0	0
Robbery	0	0	0	0	0	0	0	0	0
Aggravated Assault	0	0	0	0	0	0	0	0	0
Burglary	0	0	0	0	0	0	0	0	0
Motor Vehicle Theft	0	0	0	0	0	0	0	0	0
Arson	0	0	0	0	0	0	0	0	0
Simple Assault	0	0	0	0	0	0	0	0	0
Larceny/Theft	0	0	0	0	0	0	0	0	0
Intimidation	0	0	0	0	0	0	0	0	0
Destruction/Damage/Vandalism of Property	0	0	0	0	0	0	0	0	0
VAWA OFFENSES	On Campus			Noncampus			Public Property		
	2021	2022	2023	2021	2022	2023	2021	2022	2023
Domestic Violence	0	0	0	0	0	0	0	0	0
Dating Violence	0	0	0	0	0	0	0	0	0
Stalking	0	0	0	0	0	0	0	0	0

ARREST	On Campus			Noncampus			Public Property		
	2021	2022	2023	2021	2022	2023	2021	2022	2023
Weapons: Carrying, Possessing, etc.	0	0	0	0	0	0	0	0	0
Drug Abuse Violation	0	0	0	0	0	0	0	0	0
Liquor Law Violations	0	0	0	0	0	0	0	0	0
DISCIPLINARY ACTIONS	On Campus			Noncampus			Public Property		
	2021	2022	2023	2021	2022	2023	2021	2022	2023
Weapons: Carrying, Possessing, etc.	0	0	0	0	0	0	0	0	0
Drug Abuse Violation	0	0	0	0	0	0	0	0	0
Liquor Law Violations	0	0	0	0	0	0	0	0	0
UNFOUNDED CRIMES	2021			2022			2023		
	0			0			0		

BAKERSFIELD CAMPUS CLERY MAP (GEOGRAPHY)

The preceding crime statistic tables reflect the mandatory reporting offenses as specified in the Jeanne Clery Act. The tables display crime data over the past three calendar years and are separated by crimes occurring in four different geographical locations: 1. On Campus – the main core campus 2. Non-Campus - crimes occurring off of campus property, and 3. Public Property - crimes occurring on the borders of the Campus.



LAS VEGAS CAMPUS CRIME STATISTICS

The following criminal offenses occurred during the calendar years listed.

CRIMINAL OFFENSES	On Campus			Noncampus			Public Property		
	2021	2022	2023	2021	2022	2023	2021	2022	2023
Murder/Non-Negligent Manslaughter	0	0	0	0	0	0	0	0	0
Manslaughter by Negligence	0	0	0	0	0	0	0	0	0
Rape	0	0	0	0	0	0	0	0	0
Fondling	0	0	0	0	0	0	0	0	0
Incest	0	0	0	0	0	0	0	0	0
Statutory Rape	0	0	0	0	0	0	0	0	0
Robbery	0	0	0	0	0	0	0	0	0
Aggravated Assault	0	0	0	0	0	0	0	0	0
Burglary	0	0	0	0	0	0	0	0	0
Motor Vehicle Theft	0	0	0	0	0	0	0	0	0
Arson	0	0	0	0	0	0	0	0	0
HATE CRIMES ON CAMPUS	2023	Race	Religion	Sexual Orientation	Gender	Gender Identity	Disability	Ethnicity	National Origin
Murder/Non-Negligent Manslaughter	0	0	0	0	0	0	0	0	0
Rape	0	0	0	0	0	0	0	0	0
Fondling	0	0	0	0	0	0	0	0	0
Incest	0	0	0	0	0	0	0	0	0
Statutory Rape	0	0	0	0	0	0	0	0	0
Robbery	0	0	0	0	0	0	0	0	0
Aggravated Assault	0	0	0	0	0	0	0	0	0
Burglary	0	0	0	0	0	0	0	0	0
Motor Vehicle Theft	0	0	0	0	0	0	0	0	0
Arson	0	0	0	0	0	0	0	0	0
Simple Assault	0	0	0	0	0	0	0	0	0
Larceny/Theft	0	0	0	0	0	0	0	0	0
Intimidation	0	0	0	0	0	0	0	0	0
Destruction/Damage/Vandalism of Property	0	0	0	0	0	0	0	0	0
HATE CRIMES NONCAMPUS	2023	Race	Religion	Sexual Orientation	Gender	Gender Identity	Disability	Ethnicity	National Origin
Murder/Non-Negligent Manslaughter	0	0	0	0	0	0	0	0	0
Rape	0	0	0	0	0	0	0	0	0
Fondling	0	0	0	0	0	0	0	0	0
Incest	0	0	0	0	0	0	0	0	0
Statutory Rape	0	0	0	0	0	0	0	0	0
Robbery	0	0	0	0	0	0	0	0	0
Aggravated Assault	0	0	0	0	0	0	0	0	0
Burglary	0	0	0	0	0	0	0	0	0

HATE CRIMES NONCAMPUS CONTINUED	2023	Race	Religion	Sexual Orientation	Gender	Gender Identity	Disability	Ethnicity	National Origin
Motor Vehicle Theft	0	0	0	0	0	0	0	0	0
Arson	0	0	0	0	0	0	0	0	0
Simple Assault	0	0	0	0	0	0	0	0	0
Larceny/Theft	0	0	0	0	0	0	0	0	0
Intimidation	0	0	0	0	0	0	0	0	0
Destruction/Damage/Vandalism of Property	0	0	0	0	0	0	0	0	0
HATE CRIMES PUBLIC PROPERTY	2023	Race	Religion	Sexual Orientation	Gender	Gender Identity	Disability	Ethnicity	National Origin
Murder/Non-Negligent Manslaughter	0	0	0	0	0	0	0	0	0
Rape	0	0	0	0	0	0	0	0	0
Fondling	0	0	0	0	0	0	0	0	0
Incest	0	0	0	0	0	0	0	0	0
Statutory Rape	0	0	0	0	0	0	0	0	0
Robbery	0	0	0	0	0	0	0	0	0
Aggravated Assault	0	0	0	0	0	0	0	0	0
Burglary	0	0	0	0	0	0	0	0	0
Motor Vehicle Theft	0	0	0	0	0	0	0	0	0
Arson	0	0	0	0	0	0	0	0	0
Simple Assault	0	0	0	0	0	0	0	0	0
Larceny/Theft	0	0	0	0	0	0	0	0	0
Intimidation	0	0	0	0	0	0	0	0	0
Destruction/Damage/Vandalism of Property	0	0	0	0	0	0	0	0	0
HATE CRIMES ON CAMPUS	2022	Race	Religion	Sexual Orientation	Gender	Gender Identity	Disability	Ethnicity	National Origin
Murder/Non-Negligent Manslaughter	0	0	0	0	0	0	0	0	0
Rape	0	0	0	0	0	0	0	0	0
Fondling	0	0	0	0	0	0	0	0	0
Incest	0	0	0	0	0	0	0	0	0
Statutory Rape	0	0	0	0	0	0	0	0	0
Robbery	0	0	0	0	0	0	0	0	0
Aggravated Assault	0	0	0	0	0	0	0	0	0
Burglary	0	0	0	0	0	0	0	0	0
Motor Vehicle Theft	0	0	0	0	0	0	0	0	0
Arson	0	0	0	0	0	0	0	0	0
Simple Assault	0	0	0	0	0	0	0	0	0
Larceny/Theft	0	0	0	0	0	0	0	0	0
Intimidation	0	0	0	0	0	0	0	0	0
Destruction/Damage/Vandalism of Property	0	0	0	0	0	0	0	0	0

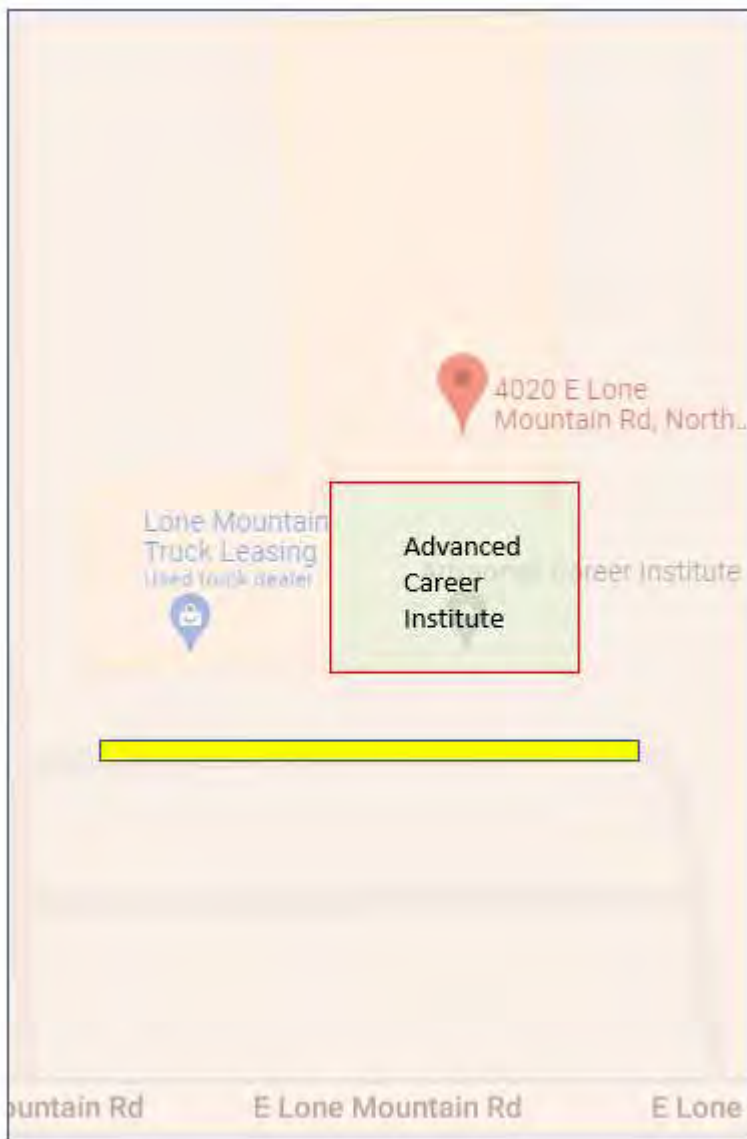
HATE CRIMES NONCAMPUS	2022	Race	Religion	Sexual Orientation	Gender	Gender Identity	Disability	Ethnicity	National Origin
Murder/Non-Negligent Manslaughter	0	0	0	0	0	0	0	0	0
Rape	0	0	0	0	0	0	0	0	0
Fondling	0	0	0	0	0	0	0	0	0
Incest	0	0	0	0	0	0	0	0	0
Statutory Rape	0	0	0	0	0	0	0	0	0
Robbery	0	0	0	0	0	0	0	0	0
Aggravated Assault	0	0	0	0	0	0	0	0	0
Burglary	0	0	0	0	0	0	0	0	0
HATE CRIMES NONCAMPUS CONTINUED	2022	Race	Religion	Sexual Orientation	Gender	Gender Identity	Disability	Ethnicity	National Origin
Motor Vehicle Theft	0	0	0	0	0	0	0	0	0
Arson	0	0	0	0	0	0	0	0	0
Simple Assault	0	0	0	0	0	0	0	0	0
Larceny/Theft	0	0	0	0	0	0	0	0	0
Intimidation	0	0	0	0	0	0	0	0	0
Destruction/Damage/Vandalism of Property	0	0	0	0	0	0	0	0	0
HATE CRIMES PUBLIC PROPERTY	2022	Race	Religion	Sexual Orientation	Gender	Gender Identity	Disability	Ethnicity	National Origin
Murder/Non-Negligent Manslaughter	0	0	0	0	0	0	0	0	0
Rape	0	0	0	0	0	0	0	0	0
Fondling	0	0	0	0	0	0	0	0	0
Incest	0	0	0	0	0	0	0	0	0
Statutory Rape	0	0	0	0	0	0	0	0	0
Robbery	0	0	0	0	0	0	0	0	0
Aggravated Assault	0	0	0	0	0	0	0	0	0
Burglary	0	0	0	0	0	0	0	0	0
Motor Vehicle Theft	0	0	0	0	0	0	0	0	0
Arson	0	0	0	0	0	0	0	0	0
Simple Assault	0	0	0	0	0	0	0	0	0
Larceny/Theft	0	0	0	0	0	0	0	0	0
Intimidation	0	0	0	0	0	0	0	0	0
Destruction/Damage/Vandalism of Property	0	0	0	0	0	0	0	0	0
HATE CRIMES ON CAMPUS	2021	Race	Religion	Sexual Orientation	Gender	Gender Identity	Disability	Ethnicity	National Origin
Murder/Non-Negligent Manslaughter	0	0	0	0	0	0	0	0	0
Rape	0	0	0	0	0	0	0	0	0
Fondling	0	0	0	0	0	0	0	0	0
Incest	0	0	0	0	0	0	0	0	0
Statutory Rape	0	0	0	0	0	0	0	0	0
Robbery	0	0	0	0	0	0	0	0	0
Aggravated Assault	0	0	0	0	0	0	0	0	0
Burglary	0	0	0	0	0	0	0	0	0
Motor Vehicle Theft	0	0	0	0	0	0	0	0	0


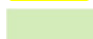
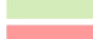
HATE CRIMES ONCAMPUS CON TINUED	2021	Race	Religion	Sexual Orientation	Gender	Gender Identity	Disability	Ethnicity	National Origin
Arson	0	0	0	0	0	0	0	0	0
Simple Assault	0	0	0	0	0	0	0	0	0
Larceny/Theft	0	0	0	0	0	0	0	0	0
Intimidation	0	0	0	0	0	0	0	0	0
Destruction/Damage/Vandalism of Property	0	0	0	0	0	0	0	0	0
HATE CRIMES NONCAMPUS	2021	Race	Religion	Sexual Orientation	Gender	Gender Identity	Disability	Ethnicity	National Origin
Murder/Non-Negligent Manslaughter	0	0	0	0	0	0	0	0	0
Rape	0	0	0	0	0	0	0	0	0
Fondling	0	0	0	0	0	0	0	0	0
Incest	0	0	0	0	0	0	0	0	0
Statutory Rape	0	0	0	0	0	0	0	0	0
Robbery	0	0	0	0	0	0	0	0	0
Aggravated Assault	0	0	0	0	0	0	0	0	0
Burglary	0	0	0	0	0	0	0	0	0
Motor Vehicle Theft	0	0	0	0	0	0	0	0	0
Arson	0	0	0	0	0	0	0	0	0
Simple Assault	0	0	0	0	0	0	0	0	0
Larceny/Theft	0	0	0	0	0	0	0	0	0
Intimidation	0	0	0	0	0	0	0	0	0
Destruction/Damage/Vandalism of Property	0	0	0	0	0	0	0	0	0
HATE CRIMES PUBLIC PROPERTY	2021	Race	Religion	Sexual Orientation	Gender	Gender Identity	Disability	Ethnicity	National Origin
Murder/Non-Negligent Manslaughter	0	0	0	0	0	0	0	0	0
Rape	0	0	0	0	0	0	0	0	0
Fondling	0	0	0	0	0	0	0	0	0
Incest	0	0	0	0	0	0	0	0	0
Statutory Rape	0	0	0	0	0	0	0	0	0
Robbery	0	0	0	0	0	0	0	0	0
Aggravated Assault	0	0	0	0	0	0	0	0	0
Burglary	0	0	0	0	0	0	0	0	0
Motor Vehicle Theft	0	0	0	0	0	0	0	0	0
Arson	0	0	0	0	0	0	0	0	0
Simple Assault	0	0	0	0	0	0	0	0	0
Larceny/Theft	0	0	0	0	0	0	0	0	0
Intimidation	0	0	0	0	0	0	0	0	0
Destruction/Damage/Vandalism of Property	0	0	0	0	0	0	0	0	0
VAWA OFFENSES	On Campus			Noncampus			Public Property		
	2021	2022	2023	2021	2022	2023	2021	2022	2023
Domestic Violence	-	0	0	0	0	0	0	0	0
Dating Violence	-	0	0	0	0	0	0	0	0
Stalking	-	0	0	0	0	0	0	0	0

ARREST	On Campus			Noncampus			Public Property		
	2021	2022	2023	2021	2022	2023	2021	2022	2023
Weapons: Carrying, Possessing, etc.	0	0	0	0	0	0	0	0	0
Drug Abuse Violation	0	0	0	0	0	0	0	0	0
Liquor Law Violations	0	0	0	0	0	0	0	0	0
DISCIPLINARY ACTIONS	On Campus			Noncampus			Public Property		
	2021	2022	2023	2021	2022	2023	2021	2022	2023
Weapons: Carrying, Possessing, etc.	0	0	0	0	0	0	0	0	0
Drug Abuse Violation	0	0	0	0	0	0	0	0	0
Liquor Law Violations	0	0	0	0	0	0	0	0	0
UNFOUNDED CRIMES	2021			2022			2023		
	0			0			0		

LAS VEGAS CAMPUS CLERY MAP (GEOGRAPHY)

The preceding crime statistic tables reflect the mandatory reporting offenses as specified in the Jeanne Clery Act. The tables display crime data over the past three calendar years and are separated by crimes occurring in four different geographical locations: 1. On Campus – the main core campus 2. Non-Campus - crimes occurring off of campus property, and 3. Public Property - crimes occurring on the borders of the Campus.



-  Public Property
-  On Campus
-  NonCampus

DEFINITIONS

Consent: The term “consent” means a willingness to participate in a mutually agreed upon sexual activity indicated by words and/or actions which are informed, freely and actively given, and mutually understood.

Sexual Assault: An offense classified as a forcible or non-forcible sex offense under the uniform crime reporting system of the Federal Bureau of Investigation. In Pennsylvania, sexual assault is defined by Title 18 as a person engaging in sexual intercourse or deviate sexual intercourse with a complainant without the complainants consent.

Rape: The penetration, no matter how slight, of the vagina or anus with any body part or object, or oral penetration by a sex organ of another person, without consent of the victim. Rape also occurs when a person engages in sexual intercourse with a person by forcible compulsion or the threat of forcible compulsion that would prevent resistance by a person of reasonable resolution, or when a person is unconscious or where the person knows that the victim is unaware that the act is occurring. This definition includes any gender of victim or perpetrator

Dating Violence: Violence by a person who is or has been in a social relationship of a romantic or intimate nature with the victim; and where the existence of such a relationship shall be determined based on a consideration of the length and type of relationship; and the frequency of interaction between the persons involved in the relationship. Dating violence is currently not specifically defined by Pennsylvania State statute.

Domestic Violence: A felony or misdemeanor crime of violence committed by a current or former spouse or intimate partner of the victim, by a person with whom the victim shares a child in common, by a person who is cohabitating with or has cohabitated with the victim as a spouse or intimate partner; by a person similarly situated to a spouse of the victim under the domestic or family violence laws of the jurisdiction receiving grant monies (under VAWA), or by any other person against an adult or youth victim who is protected from that person’s acts under the domestic or family violence laws of the jurisdiction. Domestic Violence is currently not specifically defined by Pennsylvania state statute, however family abuse is. Abuse is defined as the occurrence of one or more of the following acts between family or household members, sexual or intimate partners or persons who share biological parenthood:

- (1) Attempting to cause or intentionally, knowingly or recklessly causing bodily injury, serious bodily injury, rape, involuntary deviate sexual intercourse, sexual assault, statutory sexual assault, aggravated indecent assault, indecent assault or incest with or without a deadly weapon.
- (2) Placing another in reasonable fear of imminent serious bodily injury.
- (3) The infliction of false imprisonment pursuant to 18 Pa.C.S. §2903 (relating to false imprisonment).
- (4) Physically or sexually abusing minor children, including such terms as defined in Chapter 63 (relating to child protective services).
- (5) Knowingly engaging in a course of conduct or repeatedly committing acts toward another person, including following the person, without proper authority, under circumstances which place the person in reasonable fear of bodily injury. The definition of this paragraph applies only to proceedings commenced under this title and is inapplicable to any criminal prosecutions commenced under Title 18 (relating to crimes and offenses).

Stalking: Engaging in a course of conduct directed at a specific person that would cause a reasonable person to fear for his or her safety or the safety of others; or to suffer substantial emotional distress. A person commits the crime of stalking when the person either:

- (1) engages in a course of conduct or repeatedly commits acts toward another person, including following the person without proper authority, under circumstances which demonstrate either an intent to place such other person in reasonable fear of bodily injury or to cause substantial emotional distress to such other person; or
- (2) engages in a course of conduct or repeatedly communicates to another person under circumstances which demonstrate or communicate either an intent to place such other person in reasonable fear of bodily injury or to cause substantial emotional distress to such other person.

Hate Crime: A hate crime is a criminal offense committed against a person or property which is motivated, in whole or in part, by the offender's bias. Bias is a performed negative opinion or attitude toward a group of persons based on their race, gender, religion, disability, sexual orientation or ethnicity/national origin.

The school reports all hate crime statistics separately for the categories of criminal offenses listed in the chart above. Additionally, hate crimes statistics are also reported separately for the following offenses:

- **Larceny-theft:** is the unlawful taking, carrying, leading, or riding away of property from the possession or constructive possession of another. Constructive possession is the condition in which a person does not have physical custody or possession but is in a position to exercise dominion or control over a thing.
- **Simple Assault:** is an unlawful physical attack by one person upon another where neither the offender displays a weapon, nor the victim suffers obvious severe or aggravated bodily injury involving apparent broken bones, loss of teeth, possible internal injury, severe laceration, or loss of consciousness.
- **Intimidation:** is to unlawfully place another person in reasonable fear of bodily harm through the use of threatening words and/or other conduct, but without displaying a weapon or subjecting the victim to actual physical attack.
- **Destructive/Damage/Vandalism of Property:** Is to willfully or maliciously destroy, damage, deface or otherwise injury real or personal property without the consent of the owner or the person having custody or control of it.

There were no reported hate crimes for the years 2021, 2022, or 2023.

RESIDENTIAL FACILITIES

Advanced Career Institute does not have any school-operated residential facilities for students.