



2019

Annual Security Report

Table of Contents

ANNUAL SECURITY REPORT	3
CAMPUS SECURITY AUTHORITIES.....	3
CRIME STATISTICS.....	4
PERSONAL SAFETY	4
REPORTING A CRIME.....	4
INVESTIGATIONS	5
SUPPORTIVE SERVICES.....	6
SEXUAL ASSAULT PREVENTION	6
REGISTERED SEX OFFENDERS.....	7
EMERGENCY NOTIFICATION.....	7
TIMELY WARNING	8
EMERGENCY RESPONSE/EVACUATION PROCEDURES	9
VISALIA CAMPUS CRIME STATISTICS.....	10
VISALIA CAMPUS CLERY MAP (GEOGRAPAHY).....	15
FRESNO CAMPUS CRIME STATISTICS	16
FRESNO CAMPUS CLERY MAP (GEOGRAPAHY)	21
NORTH AVE CRIME STATISTICS	22
NORTH AVE CAMPUS CLERY MAP (GEOGRAPAHY).....	27
MERCED CAMPUS CRIME STATISTICS.....	28
MERCED CAMPUS CLERY MAP (GEOGRAPAHY).....	33
BAKERSFIELD CAMPUS CRIME STATISTICS	34
BAKERSFIELD CAMPUS CLERY MAP (GEOGRAPAHY).....	39
DEFINITIONS.....	40
RESIDENTIAL FACILITIES	41

ANNUAL SECURITY REPORT

The Executive Office of Advanced Career Institute is responsible for campus security. The personnel of this department are empowered to enforce Advanced Career Institute's regulations and to investigate incidents on campus. All criminal incidents, accidents, and other emergencies are reported to the local authorities. When necessary, Advanced Career Institute will press charges against the criminal violators.

The school prepares this report to comply with the Jeanne Clery Disclosure of Campus Security Policy and Crime Statistics Act (Clery Act). This report is prepared in cooperation with local law enforcement agencies. Nothing in the law shall be construed to permit a school to retaliate, intimidate, threaten, coerce, or otherwise discriminate against any individual with respect to the implementation of the Clery Act.

Our school attempts to provide students and employees with a safe and secure environment in which to study and work. The school is open during posted hours. Access to campus facilities is generally limited to students, employees and approved guests during regularly scheduled business hours and class times. Employees should verify that the front office is notified of all anticipated visitors. Visitors should be instructed to report to the front office where they will sign in on the Visitor's Log. School facilities are secured during times the school is not open.

CAMPUS SECURITY AUTHORITIES

Advanced Career Institute's commitment to campus safety is guided by the contents of the Jeanne Clery Disclosure of Campus Security Policy and Crime Statistics Act.

Each location has a person responsible for overseeing campus security staff, ensuring the collection of crime reports, and providing timely warning to the campus community:

David Bither, EVP, Corporate Office
(559) 740-0215 ext. 101

Alexandra Rios, FAO, Corporate Office
(559-740-0215 ext. 102

Larry Helmuth, Campus Director, Visalia Campus
(559) 651-1978

Everett Yockey, Campus Director, Fresno Campus
(559) 441-4345

Everett Yockey, Campus Director, Merced Campus
(209) 580-4960

Everett Yockey, Campus Director, Bakersfield Campus
(661) 588-3525

Advanced Career Institute's Annual Security Report is published and posted online at www.Advanced.edu under Consumer Information, Annual Security Report and all current students and employees are notified of its availability in writing. This report includes statistical data on the incidence of crime over the past three years. This data is collected, and reported to the Department of Education.

Prospective employees and students are informed in writing that the report is available at www.Advanced.edu under Consumer Information, Annual Security Report and is provided to them if requested.

CRIME STATISTICS

The crime statistics included in the Annual Security Report are based on incident reports and data collected from the local law enforcement agencies in whose jurisdiction campuses are located, if made available. These statistics include crimes committed on campus, off campus or on the public property that is immediately adjacent to, and accessible from, the campus. These statistics include those reported to a Campus Safety Officer, employee, city police, or county sheriff's department.

PERSONAL SAFETY

While the school attempts to provide a safe and secure environment, students, faculty, staff and campus visitors are ultimately responsible for their safety. Safety is enhanced when students and employees take precautions such as:

- Report all suspicious activity to Campus Security Authorities (CSA) immediately.
- Never take personal safety for granted.
- Avoid walking alone at night. Travel with a friend or companion.
- Avoid parking or walking in secluded or dimly lit areas.
- Limit your alcohol consumption, and leave social functions that get too loud, too crowded, or that have too many people drinking excessively.
- Carry only small amounts of cash.
- Never leave valuables (wallets, purses, books, computers, etc.) unattended.
- Carry your keys with you at all times and don't lend them to anyone.
- Lock your car doors and close the windows when leaving your car.
- Never leave valuables in your car especially if they are easily noticeable.
- Inventory your personal property and make records of the serial numbers of all items of value.
- Never admit anyone without a valid ID badge on campus/school premises.

As the school becomes aware of relevant programs that address responsible practices and procedures that enhance personal safety, when obtained such information will be made available in the Media Center.

REPORTING A CRIME

If a student or employee is aware that a crime has been, or is being, committed on school property or at a school sponsored or recognized event off-campus during the hours that the school is open, the crime should be reported as soon as possible to the Campus Director's Office or any CSA. The Campus Director's Office is located in the front office at each campus. Other emergencies should also be reported to the Campus Director's Office. If the crime has been committed when the school is closed, it should be reported to the Campus Director's Office as soon as possible after school is open. In addition to reporting the crime to the Campus Director's Office, the crime should be reported to local law enforcement authorities. The local Fresno Police Department may be reached at (559) 621-7000, Visalia Police Department at (559) 734-8116, Merced Police

Department at (209) 385-8880 or Bakersfield Police Department at (661) 327-7111. In an emergency, the local Police Department may be contacted by dialing 911.

The Front Office at each campus has authority to determine whether individuals have lawful business at the school and may request identification to make that determination. In addition, they have the authority to ensure that school policies, such as break time and building access, are followed. The school works with local law enforcement agencies and refers criminal incidents to the local police department having jurisdiction over such matters.

The Campus Director will work with local law enforcement, as appropriate, when a crime is reported. Crimes reported to the Campus Director's Office are included in the annual campus crime statistics. In addition, the school requests from the local Police Department crime information not reported to the school Campus Director's Office that is appropriate for inclusion in the annual campus crime statistics. Further, if circumstances warrant, the school community will be notified if an on-going threat is posed related to a reported crime.

If you are the victim of a crime and do not want to pursue action through the school or the criminal justice system, you may still consider making a confidential report. The purpose of a confidential report is to comply with your wish to keep the matter confidential, while taking steps to ensure the future safety of yourself and others. Reports filed in this manner are included in the annual crime statistics for the school.

The school does not tolerate violence or other threatening conduct against any members of the school community. This includes criminal acts against persons or property, as well as harassment based on sex, race, ethnicity, or disability. The school will impose strict disciplinary actions and appropriately involve law enforcement officials should any acts of violence or threatening conduct occur on school facilities or at school-sponsored events. This includes acts of violence against women.

In addition to any criminal sanctions, the school will impose appropriate disciplinary sanctions if the offender is a student or employee of the school. The school Campus Director's Office should be contacted should one wish to file a complaint. Also, note that, in cases of sexual assault complaints:

- ❖ both the accuser and the accused are entitled to the same opportunities to have others present during the disciplinary hearing and
- ❖ both the accuser and the accused shall be informed of the outcome of any disciplinary proceeding based on an allegation of sexual assault.

The school will work with the victim, should it be requested, in making such changes as can reasonably be accommodated relative to the student's academic and living situations.

INVESTIGATIONS

In the event that a student or employee is accused or suspected of committing a crime on campus, or while participating in an institution sponsored activity, the institution will cooperate in full with the appropriate law enforcement agency. It may be necessary to suspend the employee or student during the course of an investigation. The institution will impose the appropriate sanction, up to and including termination, if the accused is found guilty.

SUPPORTIVE SERVICES

Advanced Career Institute is committed to providing appropriate support to employees and students who are the victims of crime on campus. The Campus Director will coordinate these services. Advanced Career Institute does not employ pastoral counselors, professional therapists, or psychological counselors; however, referral to these support services can be arranged in a confidential meeting with the Campus Director.

SEXUAL ASSAULT PREVENTION

Advanced Career Institute prohibits the crimes of dating violence, domestic violence, sexual assault, and stalking, as those terms are defined in [34 CFR 668.46\(a\)](#).

Advanced Career Institute recognizes that students and employees have the right to determine their own personal associations and the level of intimacy in each. However, it is also the ACI's objective that friendships and intimacy be completely voluntary and free from physical, sexual or mental coercion. In order to support this objective, Advanced Career Institute has these policies regarding sex offenses directed against students and/or employees:

1. The offenses of criminal sexual assault, aggravated criminal sexual assault, criminal sexual abuse and aggravated sexual abuse constitute sex offenses under the law.
2. A student or employee who, while on campus, is a sex offense victim is encouraged to immediately contact the Campus Director and/or the local law enforcement agency. If the victim requests assistance from ACI staff in reporting the offense to law enforcement agencies, reasonable support will be given.
3. In the event of a sexual assault or domestic violence, please be aware of the following:
 - ❖ preserve any evidence of the assault (do not drink, bathe, change clothing, or comb hair, as this may destroy evidence that may be needed to prosecute the offender)
 - ❖ go to a place where it is safe from further attack and notify the police
 - ❖ obtain immediate medical attention
 - ❖ seek professional counseling
4. Although the campus does not have on-campus victim services, referral to off campus sex offender victim services is facilitated through the Campus Director
5. Accusations of sex offenses reported to Advanced Career Institute, after investigation determine that the conduct has occurred, may result in academic or employment disciplinary action being taken against the offender. Sanctions include suspension, termination and/ or criminal prosecution.
6. During disciplinary hearings, both the accuser and the accused are entitled to the same opportunities to have others present during the proceeding, including the opportunity to be accompanied to any related meeting or proceeding by an advisor of their choice.
7. Both the accuser and accused will be notified simultaneously and in writing of: the outcome of the proceeding; appeal procedures; any change to the result before it becomes final; and when the result becomes final.
8. A victims' confidentiality will be protected, including record-keeping that excludes personally-identifiable information on victims.

9. Victims of sex offenses will be provided counseling with a referral to the appropriate community health organization.
10. Advanced Career Institute may change the victim student's schedule of courses depending on the nature and seriousness of the sex offense. These decisions will be based on the circumstances of the incident, the needs of the victim and the availability of resources to support the requested change. In an effort to inform and educate the institution's community, programs will be offered that address the issues of rape awareness, acquaintance rape, domestic violence, dating violence, sexual assault, and stalking. These programs will be directed toward prevention through awareness, and are first presented during employee/student orientations and at least annually thereafter.

REGISTERED SEX OFFENDERS

The Jacob Wetterling Act requires states to obtain information concerning registered sex offenders' enrollment or employment at institutions of higher education. Those seeking to obtain information about registered sex offenders should visit the following website: www.nsopr.gov. Further, to the extent the State notifies an educational institution of information concerning registered sex offenders, the Family Educational Rights and Privacy Act (FERPA) does not prevent educational institutions from disclosing such information.

In the State of California, convicted sex offenders must register with the Sex Offender Tracking Program maintained by the California Department of Justice and is provided for the purposes including the protection of the general public. The California Department of Justice is responsible for maintaining this registry, located at: <http://www.meganslaw.ca.gov>.

EMERGENCY NOTIFICATION

It is the intent of Advanced Career Institute to protect students, visitors and employees from serious injury, property loss or loss of life. If a significant emergency or dangerous situation involving an immediate threat to the health and safety of students and employees occurs on campus, Advanced Career Institute will utilize its Emergency Notification System (Text Aim) to send a SMS text message and email to staff and students.

Persons responsible for planning, implementing and communicating urgent notifications are the Campus Director and Emergency Response Team (ERT). The responsibilities of the ERT include assessing the nature and extent of emergency, coordinating appropriate response, facilitating emergency evacuation or lockdown and administering first aid and CPR as a first responder. Some examples of significant emergencies include fire, hazardous material spill or release, disruptive or combative person, riot or civil disturbance, earthquake and bomb threat. Widespread emergencies have the potential to prevent students and employees from reaching the campus and may necessitate its closure. During a widespread emergency, the Campus Director may decide to close the campus, keep the campus open under special conditions, or keep the campus open as usual.

The Campus Director's decision and any related information will be communicated to the campus community as follows:

Campus personnel will record a status message that can be heard on the main campus phone number. The message will be updated as necessary.

- Campus administration will make every reasonable effort to post status signs on the campus.

- Employees and students unable to reach the campus due to safety concerns should communicate their status by leaving a voice message, if possible, with the campus administration.

In addition, methods of immediate internal communication include automated alarm for the fire detection, verbal alert by ERT members, and/or telephone systems. External methods of notification include police or fire-rescue, civil defense system and commercial radio or television. Employee and students are to report emergencies to the Campus Director or front desk to initiate the process of the Emergency Response Team.

Maps are posted in numerous locations throughout the facilities. Employees and students should be aware of how they will evacuate the facilities, no matter where they are located. Basic instructions include evacuating quickly and orderly, without running, to the nearest exit at the sound of the fire alarm, proceeding to the gathering area and waiting for instructions, remaining in the gathering area until given permission to leave or return to the facility. Talking and cell phone use is prohibited. More detailed instructions are located in the Emergency Action Plan in each Office and Classroom.

Evacuation drills are conducted at student orientation for all students.

TIMELY WARNING

Advanced Career Institute takes seriously its responsibility to notify students and employees in a timely manner when any of the following have been reported to the Campus or local police agencies:

- Murder, non-negligent manslaughter, negligent manslaughter
- Forcible and non-forcible sex offenses
- Robbery
- Aggravated assault
- Burglary
- Motor vehicle theft
- Crimes of murder, forcible rape and aggravated assault that show evidence of prejudice based on race, religion, sexual orientation, ethnicity or disability

This timely warning information is provided in an appropriate manner in order to prevent similar crimes from occurring and to protect the personal safety of students and employees. Anyone with information warranting a timely warning should report by phone or in person the circumstances to the Campus Director, who is responsible for issuing these warnings. In the event that a situation arises, either on or off campus, that, in the judgment of the Campus Director, constitutes an ongoing or continuing threat, a campus wide “timely warning” will be issued.

Information is released through security alerts posted through the use of an SMS text messaging system (Text Aim), email and telephone systems. Text Aim will send urgent notifications to staff and students via SMS text message. Authorized users may enter a message, choose the campus location, and choose the recipient group from either, Staff, Students, or both. This message is then sent via text message. Employees and students may opt in or out of the emergency text messaging system. Warnings will be issued through e-mail or via Text Aim to students, faculty, and staff.

EMERGENCY RESPONSE/EVACUATION PROCEDURES

The school maintains an Emergency Action Plan and is posted in the front office and in all classrooms at each campus. The school may also test emergency response and evacuation procedures periodically through drills or exercises. Please contact the Campus Director's Office for more information.

VISALIA CAMPUS CRIME STATISTICS

The following criminal offenses occurred during the calendar years listed.

CRIMINAL OFFENSES	On Campus			Noncampus			Public Property		
	2016	2017	2018	2016	2017	2018	2016	2017	2018
Murder/Non-Negligent Manslaughter	0	0	0	0	0	0	0	0	0
Manslaughter by Negligence	0	0	0	0	0	0	0	0	0
Rape	0	0	0	0	0	0	0	0	0
Fondling	0	0	0	0	0	0	0	0	0
Incest	0	0	0	0	0	0	0	0	0
Statutory Rape	0	0	0	0	0	0	0	0	0
Robbery	0	0	0	0	0	0	0	0	0
Aggravated Assault	0	0	0	0	0	0	0	0	0
Burglary	0	0	0	0	0	0	0	0	0
Motor Vehicle Theft	0	0	0	0	0	0	0	0	0
Arson	0	0	0	0	0	0	0	0	0
HATE CRIMES ON CAMPUS	2018	Race	Religion	Sexual Orientation	Gender	Gender Identity	Disability	Ethnicity	National Origin
Murder/Non-Negligent Manslaughter	0	0	0	0	0	0	0	0	0
Rape	0	0	0	0	0	0	0	0	0
Fondling	0	0	0	0	0	0	0	0	0
Incest	0	0	0	0	0	0	0	0	0
Statutory Rape	0	0	0	0	0	0	0	0	0
Robbery	0	0	0	0	0	0	0	0	0
Aggravated Assault	0	0	0	0	0	0	0	0	0
Burglary	0	0	0	0	0	0	0	0	0
Motor Vehicle Theft	0	0	0	0	0	0	0	0	0
Arson	0	0	0	0	0	0	0	0	0
Simple Assault	0	0	0	0	0	0	0	0	0
Larceny/Theft	0	0	0	0	0	0	0	0	0
Intimidation	0	0	0	0	0	0	0	0	0
Destruction/Damage/Vandalism of Property	0	0	0	0	0	0	0	0	0
HATE CRIMES NONCAMPUS	2018	Race	Religion	Sexual Orientation	Gender	Gender Identity	Disability	Ethnicity	National Origin
Murder/Non-Negligent Manslaughter	0	0	0	0	0	0	0	0	0
Rape	0	0	0	0	0	0	0	0	0
Fondling	0	0	0	0	0	0	0	0	0
Incest	0	0	0	0	0	0	0	0	0
Statutory Rape	0	0	0	0	0	0	0	0	0
Robbery	0	0	0	0	0	0	0	0	0
Aggravated Assault	0	0	0	0	0	0	0	0	0
Burglary	0	0	0	0	0	0	0	0	0

HATE CRIMES NONCAMPUS CONTINUED	2018	Race	Religion	Sexual Orientation	Gender	Gender Identity	Disability	Ethnicity	National Origin
Motor Vehicle Theft	0	0	0	0	0	0	0	0	0
Arson	0	0	0	0	0	0	0	0	0
Simple Assault	0	0	0	0	0	0	0	0	0
Larceny/Theft	0	0	0	0	0	0	0	0	0
Intimidation	0	0	0	0	0	0	0	0	0
Destruction/Damage/Vandalism of Property	0	0	0	0	0	0	0	0	0
HATE CRIMES PUBLIC PROPERTY	2018	Race	Religion	Sexual Orientation	Gender	Gender Identity	Disability	Ethnicity	National Origin
Murder/Non-Negligent Manslaughter	0	0	0	0	0	0	0	0	0
Rape	0	0	0	0	0	0	0	0	0
Fondling	0	0	0	0	0	0	0	0	0
Incest	0	0	0	0	0	0	0	0	0
Statutory Rape	0	0	0	0	0	0	0	0	0
Robbery	0	0	0	0	0	0	0	0	0
Aggravated Assault	0	0	0	0	0	0	0	0	0
Burglary	0	0	0	0	0	0	0	0	0
Motor Vehicle Theft	0	0	0	0	0	0	0	0	0
Arson	0	0	0	0	0	0	0	0	0
Simple Assault	0	0	0	0	0	0	0	0	0
Larceny/Theft	0	0	0	0	0	0	0	0	0
Intimidation	0	0	0	0	0	0	0	0	0
Destruction/Damage/Vandalism of Property	0	0	0	0	0	0	0	0	0
HATE CRIMES ON CAMPUS	2017	Race	Religion	Sexual Orientation	Gender	Gender Identity	Disability	Ethnicity	National Origin
Murder/Non-Negligent Manslaughter	0	0	0	0	0	0	0	0	0
Rape	0	0	0	0	0	0	0	0	0
Fondling	0	0	0	0	0	0	0	0	0
Incest	0	0	0	0	0	0	0	0	0
Statutory Rape	0	0	0	0	0	0	0	0	0
Robbery	0	0	0	0	0	0	0	0	0
Aggravated Assault	0	0	0	0	0	0	0	0	0
Burglary	0	0	0	0	0	0	0	0	0
Motor Vehicle Theft	0	0	0	0	0	0	0	0	0
Arson	0	0	0	0	0	0	0	0	0
Simple Assault	0	0	0	0	0	0	0	0	0
Larceny/Theft	0	0	0	0	0	0	0	0	0
Intimidation	0	0	0	0	0	0	0	0	0
Destruction/Damage/Vandalism of Property	0	0	0	0	0	0	0	0	0

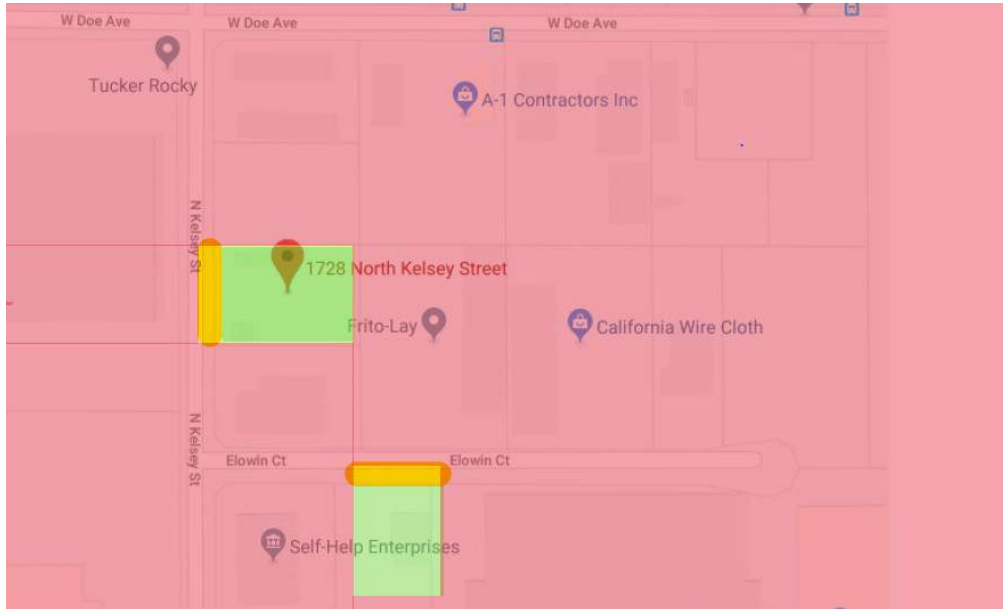
HATE CRIMES NONCAMPUS	2017	Race	Religion	Sexual Orientation	Gender	Gender Identity	Disability	Ethnicity	National Origin
Murder/Non-Negligent Manslaughter	0	0	0	0	0	0	0	0	0
Rape	0	0	0	0	0	0	0	0	0
Fondling	0	0	0	0	0	0	0	0	0
Incest	0	0	0	0	0	0	0	0	0
Statutory Rape	0	0	0	0	0	0	0	0	0
Robbery	0	0	0	0	0	0	0	0	0
Aggravated Assault	0	0	0	0	0	0	0	0	0
Burglary	0	0	0	0	0	0	0	0	0
HATE CRIMES NONCAMPUS CONTINUED	2017	Race	Religion	Sexual Orientation	Gender	Gender Identity	Disability	Ethnicity	National Origin
Motor Vehicle Theft	0	0	0	0	0	0	0	0	0
Arson	0	0	0	0	0	0	0	0	0
Simple Assault	0	0	0	0	0	0	0	0	0
Larceny/Theft	0	0	0	0	0	0	0	0	0
Intimidation	0	0	0	0	0	0	0	0	0
Destruction/Damage/Vandalism of Property	0	0	0	0	0	0	0	0	0
HATE CRIMES PUBLIC PROPERTY	2017	Race	Religion	Sexual Orientation	Gender	Gender Identity	Disability	Ethnicity	National Origin
Murder/Non-Negligent Manslaughter	0	0	0	0	0	0	0	0	0
Rape	0	0	0	0	0	0	0	0	0
Fondling	0	0	0	0	0	0	0	0	0
Incest	0	0	0	0	0	0	0	0	0
Statutory Rape	0	0	0	0	0	0	0	0	0
Robbery	0	0	0	0	0	0	0	0	0
Aggravated Assault	0	0	0	0	0	0	0	0	0
Burglary	0	0	0	0	0	0	0	0	0
Motor Vehicle Theft	0	0	0	0	0	0	0	0	0
Arson	0	0	0	0	0	0	0	0	0
Simple Assault	0	0	0	0	0	0	0	0	0
Larceny/Theft	0	0	0	0	0	0	0	0	0
Intimidation	0	0	0	0	0	0	0	0	0
Destruction/Damage/Vandalism of Property	0	0	0	0	0	0	0	0	0
HATE CRIMES ON CAMPUS	2016	Race	Religion	Sexual Orientation	Gender	Gender Identity	Disability	Ethnicity	National Origin
Murder/Non-Negligent Manslaughter	0	0	0	0	0	0	0	0	0
Rape	0	0	0	0	0	0	0	0	0
Fondling	0	0	0	0	0	0	0	0	0
Incest	0	0	0	0	0	0	0	0	0
Statutory Rape	0	0	0	0	0	0	0	0	0
Robbery	0	0	0	0	0	0	0	0	0
Aggravated Assault	0	0	0	0	0	0	0	0	0
Burglary	0	0	0	0	0	0	0	0	0
Motor Vehicle Theft	0	0	0	0	0	0	0	0	0

HATE CRIMES ONCAMPUS CON TINUED	2016	Race	Religion	Sexual Orientation	Gender	Gender Identity	Disability	Ethnicity	National Origin
Arson	0	0	0	0	0	0	0	0	0
Simple Assault	0	0	0	0	0	0	0	0	0
Larceny/Theft	0	0	0	0	0	0	0	0	0
Intimidation	0	0	0	0	0	0	0	0	0
Destruction/Damage/Vandalism of Property	0	0	0	0	0	0	0	0	0
HATE CRIMES NONCAMPUS	2016	Race	Religion	Sexual Orientation	Gender	Gender Identity	Disability	Ethnicity	National Origin
Murder/Non-Negligent Manslaughter	0	0	0	0	0	0	0	0	0
Rape	0	0	0	0	0	0	0	0	0
Fondling	0	0	0	0	0	0	0	0	0
Incest	0	0	0	0	0	0	0	0	0
Statutory Rape	0	0	0	0	0	0	0	0	0
Robbery	0	0	0	0	0	0	0	0	0
Aggravated Assault	0	0	0	0	0	0	0	0	0
Burglary	0	0	0	0	0	0	0	0	0
Motor Vehicle Theft	0	0	0	0	0	0	0	0	0
Arson	0	0	0	0	0	0	0	0	0
Simple Assault	0	0	0	0	0	0	0	0	0
Larceny/Theft	0	0	0	0	0	0	0	0	0
Intimidation	0	0	0	0	0	0	0	0	0
Destruction/Damage/Vandalism of Property	0	0	0	0	0	0	0	0	0
HATE CRIMES PUBLIC PROPERTY	2016	Race	Religion	Sexual Orientation	Gender	Gender Identity	Disability	Ethnicity	National Origin
Murder/Non-Negligent Manslaughter	0	0	0	0	0	0	0	0	0
Rape	0	0	0	0	0	0	0	0	0
Fondling	0	0	0	0	0	0	0	0	0
Incest	0	0	0	0	0	0	0	0	0
Statutory Rape	0	0	0	0	0	0	0	0	0
Robbery	0	0	0	0	0	0	0	0	0
Aggravated Assault	0	0	0	0	0	0	0	0	0
Burglary	0	0	0	0	0	0	0	0	0
Motor Vehicle Theft	0	0	0	0	0	0	0	0	0
Arson	0	0	0	0	0	0	0	0	0
Simple Assault	0	0	0	0	0	0	0	0	0
Larceny/Theft	0	0	0	0	0	0	0	0	0
Intimidation	0	0	0	0	0	0	0	0	0
Destruction/Damage/Vandalism of Property	0	0	0	0	0	0	0	0	0
VAWA OFFENSES	On Campus			Noncampus			Public Property		
	2016	2017	2018	2016	2017	2018	2016	2017	2018
Domestic Violence	0	0	0	0	0	0	0	0	0
Dating Violence	0	0	0	0	0	0	0	0	0
Stalking	0	0	0	0	0	0	0	0	0

ARREST	On Campus			Noncampus			Public Property		
	2016	2017	2018	2016	2017	2018	2016	2017	2018
Weapons: Carrying, Possessing, etc.	0	0	0	0	0	0	0	0	0
Drug Abuse Violation	0	0	0	0	0	0	0	0	0
Liquor Law Violations	0	0	0	0	0	0	0	0	0
DISCIPLINARY ACTIONS	On Campus			Noncampus			Public Property		
	2016	2017	2018	2016	2017	2018	2016	2017	2018
Weapons: Carrying, Possessing, etc.	0	0	0	0	0	0	0	0	0
Drug Abuse Violation	0	0	0	0	0	0	0	0	0
Liquor Law Violations	0	0	0	0	0	0	0	0	0
UNFOUNDED CRIMES	2016			2017			2018		
	1			0			0		

VISALIA CAMPUS CLERY MAP (GEOGRAPHY)

The preceding crime statistic tables reflect the mandatory reporting offenses as specified in the Jeanne Clery Act. The tables display crime data over the past three calendar years and are separated by crimes occurring in four different geographical locations: 1. On Campus – the main core campus 2. Non-Campus - crimes occurring off of campus property, and 3. Public Property - crimes occurring on the borders of the Campus.



- Public Property
- On Campus
- NonCampus

FRESNO CAMPUS CRIME STATISTICS

The following criminal offenses occurred during the calendar years listed.

CRIMINAL OFFENSES	On Campus			Noncampus			Public Property		
	2016	2017	2018	2016	2017	2018	2016	2017	2018
Murder/Non-Negligent Manslaughter	0	0	0	0	0	0	0	0	0
Manslaughter by Negligence	0	0	0	0	0	0	0	0	0
Rape	0	0	0	0	0	0	0	0	0
Fondling	0	0	0	0	0	0	0	0	0
Incest	0	0	0	0	0	0	0	0	0
Statutory Rape	0	0	0	0	0	0	0	0	0
Robbery	0	0	0	0	0	0	0	0	0
Aggravated Assault	0	0	0	0	0	0	0	0	0
Burglary	0	0	0	0	0	0	0	0	0
Motor Vehicle Theft	0	0	0	0	0	0	0	0	0
Arson	0	0	0	0	0	0	0	0	0
HATE CRIMES ON CAMPUS	2018	Race	Religion	Sexual Orientation	Gender	Gender Identity	Disability	Ethnicity	National Origin
Murder/Non-Negligent Manslaughter	0	0	0	0	0	0	0	0	0
Rape	0	0	0	0	0	0	0	0	0
Fondling	0	0	0	0	0	0	0	0	0
Incest	0	0	0	0	0	0	0	0	0
Statutory Rape	0	0	0	0	0	0	0	0	0
Robbery	0	0	0	0	0	0	0	0	0
Aggravated Assault	0	0	0	0	0	0	0	0	0
Burglary	0	0	0	0	0	0	0	0	0
Motor Vehicle Theft	0	0	0	0	0	0	0	0	0
Arson	0	0	0	0	0	0	0	0	0
Simple Assault	0	0	0	0	0	0	0	0	0
Larceny/Theft	0	0	0	0	0	0	0	0	0
Intimidation	0	0	0	0	0	0	0	0	0
Destruction/Damage/Vandalism of Property	0	0	0	0	0	0	0	0	0
HATE CRIMES NONCAMPUS	2018	Race	Religion	Sexual Orientation	Gender	Gender Identity	Disability	Ethnicity	National Origin
Murder/Non-Negligent Manslaughter	0	0	0	0	0	0	0	0	0
Rape	0	0	0	0	0	0	0	0	0
Fondling	0	0	0	0	0	0	0	0	0
Incest	0	0	0	0	0	0	0	0	0
Statutory Rape	0	0	0	0	0	0	0	0	0
Robbery	0	0	0	0	0	0	0	0	0
Aggravated Assault	0	0	0	0	0	0	0	0	0
Burglary	0	0	0	0	0	0	0	0	0

HATE CRIMES NONCAMPUS CONTINUED	2018	Race	Religion	Sexual Orientation	Gender	Gender Identity	Disability	Ethnicity	National Origin
Motor Vehicle Theft	0	0	0	0	0	0	0	0	0
Arson	0	0	0	0	0	0	0	0	0
Simple Assault	0	0	0	0	0	0	0	0	0
Larceny/Theft	0	0	0	0	0	0	0	0	0
Intimidation	0	0	0	0	0	0	0	0	0
Destruction/Damage/Vandalism of Property	0	0	0	0	0	0	0	0	0
HATE CRIMES PUBLIC PROPERTY	2018	Race	Religion	Sexual Orientation	Gender	Gender Identity	Disability	Ethnicity	National Origin
Murder/Non-Negligent Manslaughter	0	0	0	0	0	0	0	0	0
Rape	0	0	0	0	0	0	0	0	0
Fondling	0	0	0	0	0	0	0	0	0
Incest	0	0	0	0	0	0	0	0	0
Statutory Rape	0	0	0	0	0	0	0	0	0
Robbery	0	0	0	0	0	0	0	0	0
Aggravated Assault	0	0	0	0	0	0	0	0	0
Burglary	0	0	0	0	0	0	0	0	0
Motor Vehicle Theft	0	0	0	0	0	0	0	0	0
Arson	0	0	0	0	0	0	0	0	0
Simple Assault	0	0	0	0	0	0	0	0	0
Larceny/Theft	0	0	0	0	0	0	0	0	0
Intimidation	0	0	0	0	0	0	0	0	0
Destruction/Damage/Vandalism of Property	0	0	0	0	0	0	0	0	0
HATE CRIMES ON CAMPUS	2017	Race	Religion	Sexual Orientation	Gender	Gender Identity	Disability	Ethnicity	National Origin
Murder/Non-Negligent Manslaughter	0	0	0	0	0	0	0	0	0
Rape	0	0	0	0	0	0	0	0	0
Fondling	0	0	0	0	0	0	0	0	0
Incest	0	0	0	0	0	0	0	0	0
Statutory Rape	0	0	0	0	0	0	0	0	0
Robbery	0	0	0	0	0	0	0	0	0
Aggravated Assault	0	0	0	0	0	0	0	0	0
Burglary	0	0	0	0	0	0	0	0	0
Motor Vehicle Theft	0	0	0	0	0	0	0	0	0
Arson	0	0	0	0	0	0	0	0	0
Simple Assault	0	0	0	0	0	0	0	0	0
Larceny/Theft	0	0	0	0	0	0	0	0	0
Intimidation	0	0	0	0	0	0	0	0	0
Destruction/Damage/Vandalism of Property	0	0	0	0	0	0	0	0	0

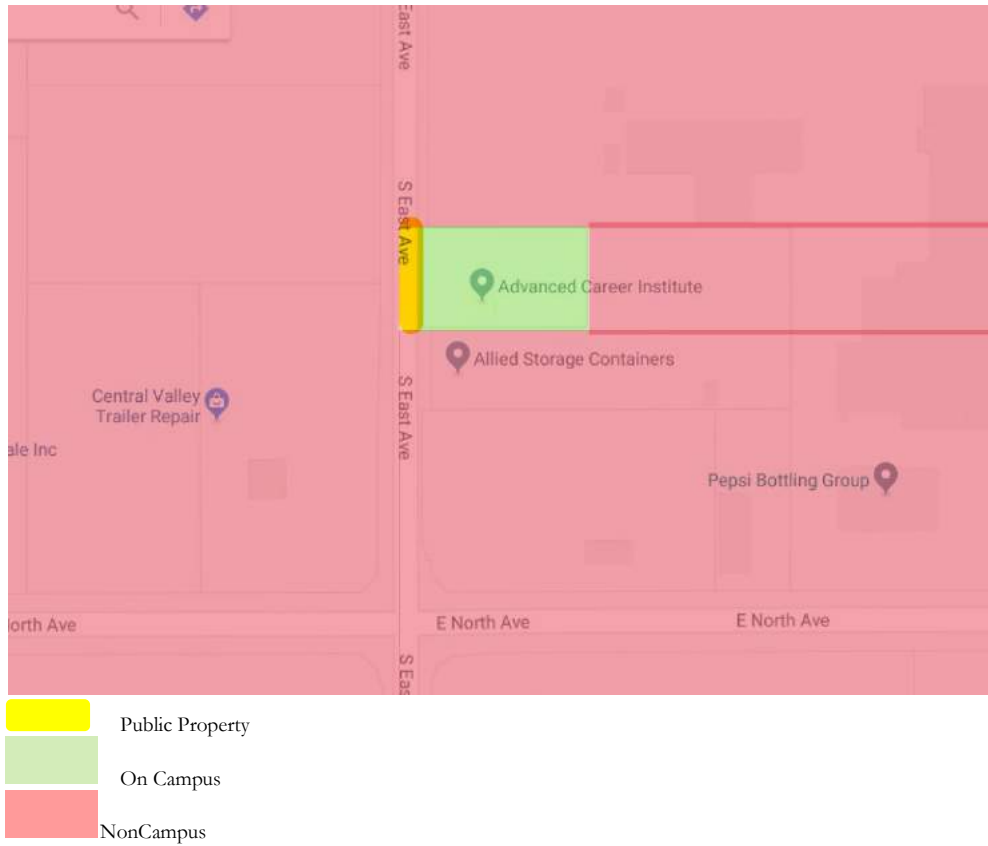
HATE CRIMES NONCAMPUS	2017	Race	Religion	Sexual Orientation	Gender	Gender Identity	Disability	Ethnicity	National Origin
Murder/Non-Negligent Manslaughter	0	0	0	0	0	0	0	0	0
Rape	0	0	0	0	0	0	0	0	0
Fondling	0	0	0	0	0	0	0	0	0
Incest	0	0	0	0	0	0	0	0	0
Statutory Rape	0	0	0	0	0	0	0	0	0
Robbery	0	0	0	0	0	0	0	0	0
Aggravated Assault	0	0	0	0	0	0	0	0	0
Burglary	0	0	0	0	0	0	0	0	0
HATE CRIMES NONCAMPUS CONTINUED	2017	Race	Religion	Sexual Orientation	Gender	Gender Identity	Disability	Ethnicity	National Origin
Motor Vehicle Theft	0	0	0	0	0	0	0	0	0
Arson	0	0	0	0	0	0	0	0	0
Simple Assault	0	0	0	0	0	0	0	0	0
Larceny/Theft	0	0	0	0	0	0	0	0	0
Intimidation	0	0	0	0	0	0	0	0	0
Destruction/Damage/Vandalism of Property	0	0	0	0	0	0	0	0	0
HATE CRIMES PUBLIC PROPERTY	2017	Race	Religion	Sexual Orientation	Gender	Gender Identity	Disability	Ethnicity	National Origin
Murder/Non-Negligent Manslaughter	0	0	0	0	0	0	0	0	0
Rape	0	0	0	0	0	0	0	0	0
Fondling	0	0	0	0	0	0	0	0	0
Incest	0	0	0	0	0	0	0	0	0
Statutory Rape	0	0	0	0	0	0	0	0	0
Robbery	0	0	0	0	0	0	0	0	0
Aggravated Assault	0	0	0	0	0	0	0	0	0
Burglary	0	0	0	0	0	0	0	0	0
Motor Vehicle Theft	0	0	0	0	0	0	0	0	0
Arson	0	0	0	0	0	0	0	0	0
Simple Assault	0	0	0	0	0	0	0	0	0
Larceny/Theft	0	0	0	0	0	0	0	0	0
Intimidation	0	0	0	0	0	0	0	0	0
Destruction/Damage/Vandalism of Property	0	0	0	0	0	0	0	0	0
HATE CRIMES ON CAMPUS	2016	Race	Religion	Sexual Orientation	Gender	Gender Identity	Disability	Ethnicity	National Origin
Murder/Non-Negligent Manslaughter	0	0	0	0	0	0	0	0	0
Rape	0	0	0	0	0	0	0	0	0
Fondling	0	0	0	0	0	0	0	0	0
Incest	0	0	0	0	0	0	0	0	0
Statutory Rape	0	0	0	0	0	0	0	0	0
Robbery	0	0	0	0	0	0	0	0	0
Aggravated Assault	0	0	0	0	0	0	0	0	0
Burglary	0	0	0	0	0	0	0	0	0
Motor Vehicle Theft	0	0	0	0	0	0	0	0	0

HATE CRIMES ONCAMPUS CON TINUED	2016	Race	Religion	Sexual Orientation	Gender	Gender Identity	Disability	Ethnicity	National Origin
Arson	0	0	0	0	0	0	0	0	0
Simple Assault	0	0	0	0	0	0	0	0	0
Larceny/Theft	0	0	0	0	0	0	0	0	0
Intimidation	0	0	0	0	0	0	0	0	0
Destruction/Damage/Vandalism of Property	0	0	0	0	0	0	0	0	0
HATE CRIMES NONCAMPUS	2016	Race	Religion	Sexual Orientation	Gender	Gender Identity	Disability	Ethnicity	National Origin
Murder/Non-Negligent Manslaughter	0	0	0	0	0	0	0	0	0
Rape	0	0	0	0	0	0	0	0	0
Fondling	0	0	0	0	0	0	0	0	0
Incest	0	0	0	0	0	0	0	0	0
Statutory Rape	0	0	0	0	0	0	0	0	0
Robbery	0	0	0	0	0	0	0	0	0
Aggravated Assault	0	0	0	0	0	0	0	0	0
Burglary	0	0	0	0	0	0	0	0	0
Motor Vehicle Theft	0	0	0	0	0	0	0	0	0
Arson	0	0	0	0	0	0	0	0	0
Simple Assault	0	0	0	0	0	0	0	0	0
Larceny/Theft	0	0	0	0	0	0	0	0	0
Intimidation	0	0	0	0	0	0	0	0	0
Destruction/Damage/Vandalism of Property	0	0	0	0	0	0	0	0	0
HATE CRIMES PUBLIC PROPERTY	2016	Race	Religion	Sexual Orientation	Gender	Gender Identity	Disability	Ethnicity	National Origin
Murder/Non-Negligent Manslaughter	0	0	0	0	0	0	0	0	0
Rape	0	0	0	0	0	0	0	0	0
Fondling	0	0	0	0	0	0	0	0	0
Incest	0	0	0	0	0	0	0	0	0
Statutory Rape	0	0	0	0	0	0	0	0	0
Robbery	0	0	0	0	0	0	0	0	0
Aggravated Assault	0	0	0	0	0	0	0	0	0
Burglary	0	0	0	0	0	0	0	0	0
Motor Vehicle Theft	0	0	0	0	0	0	0	0	0
Arson	0	0	0	0	0	0	0	0	0
Simple Assault	0	0	0	0	0	0	0	0	0
Larceny/Theft	0	0	0	0	0	0	0	0	0
Intimidation	0	0	0	0	0	0	0	0	0
Destruction/Damage/Vandalism of Property	0	0	0	0	0	0	0	0	0
VAWA OFFENSES	On Campus			Noncampus			Public Property		
	2016	2017	2018	2016	2017	2018	2016	2017	2018
Domestic Violence	0	0	0	0	0	0	0	0	0
Dating Violence	0	0	0	0	0	0	0	0	0
Stalking	0	0	0	0	0	0	0	0	0

ARREST	On Campus			Noncampus			Public Property		
	2016	2017	2018	2016	2017	2018	2016	2017	2018
Weapons: Carrying, Possessing, etc.	0	0	0	0	0	0	0	0	0
Drug Abuse Violation	0	0	0	0	0	0	0	0	0
Liquor Law Violations	0	0	0	0	0	0	0	0	0
DISCIPLINARY ACTIONS	On Campus			Noncampus			Public Property		
	2016	2017	2018	2016	2017	2018	2016	2017	2018
Weapons: Carrying, Possessing, etc.	0	0	0	0	0	0	0	0	0
Drug Abuse Violation	0	0	0	0	0	0	0	0	0
Liquor Law Violations	0	0	0	0	0	0	0	0	0
UNFOUNDED CRIMES	2016			2017			2018		
	0			0			0		

FRESNO CAMPUS CLERY MAP (GEOGRAPHY)

The preceding crime statistic tables reflect the mandatory reporting offenses as specified in the Jeanne Clery Act. The tables display crime data over the past three calendar years and are separated by crimes occurring in four different geographical locations: 1. On Campus – the main core campus 2. Non-Campus - crimes occurring off of campus property, and 3. Public Property - crimes occurring on the borders of the Campus.



NORTH AVE CRIME STATISTICS

The following criminal offenses occurred during the calendar years listed.

CRIMINAL OFFENSES	On Campus			Noncampus			Public Property		
	2016	2017	2018	2016	2017	2018	2016	2017	2018
Murder/Non-Negligent Manslaughter	0	0	0	0	0	0	0	0	0
Manslaughter by Negligence	0	0	0	0	0	0	0	0	0
Rape	0	0	0	0	0	0	0	0	0
Fondling	0	0	0	0	0	0	0	0	0
Incest	0	0	0	0	0	0	0	0	0
Statutory Rape	0	0	0	0	0	0	0	0	0
Robbery	0	0	0	0	0	0	0	0	0
Aggravated Assault	0	0	0	0	0	0	0	0	0
Burglary	0	0	0	0	0	0	0	0	0
Motor Vehicle Theft	0	0	0	0	0	0	0	0	0
Arson	0	0	0	0	0	0	0	0	0
HATE CRIMES ON CAMPUS	2018	Race	Religion	Sexual Orientation	Gender	Gender Identity	Disability	Ethnicity	National Origin
Murder/Non-Negligent Manslaughter	0	0	0	0	0	0	0	0	0
Rape	0	0	0	0	0	0	0	0	0
Fondling	0	0	0	0	0	0	0	0	0
Incest	0	0	0	0	0	0	0	0	0
Statutory Rape	0	0	0	0	0	0	0	0	0
Robbery	0	0	0	0	0	0	0	0	0
Aggravated Assault	0	0	0	0	0	0	0	0	0
Burglary	0	0	0	0	0	0	0	0	0
Motor Vehicle Theft	0	0	0	0	0	0	0	0	0
Arson	0	0	0	0	0	0	0	0	0
Simple Assault	0	0	0	0	0	0	0	0	0
Larceny/Theft	0	0	0	0	0	0	0	0	0
Intimidation	0	0	0	0	0	0	0	0	0
Destruction/Damage/Vandalism of Property	0	0	0	0	0	0	0	0	0
HATE CRIMES NONCAMPUS	2018	Race	Religion	Sexual Orientation	Gender	Gender Identity	Disability	Ethnicity	National Origin
Murder/Non-Negligent Manslaughter	0	0	0	0	0	0	0	0	0
Rape	0	0	0	0	0	0	0	0	0
Fondling	0	0	0	0	0	0	0	0	0
Incest	0	0	0	0	0	0	0	0	0
Statutory Rape	0	0	0	0	0	0	0	0	0
Robbery	0	0	0	0	0	0	0	0	0
Aggravated Assault	0	0	0	0	0	0	0	0	0
Burglary	0	0	0	0	0	0	0	0	0

HATE CRIMES NONCAMPUS CONTINUED	2018	Race	Religion	Sexual Orientation	Gender	Gender Identity	Disability	Ethnicity	National Origin
Motor Vehicle Theft	0	0	0	0	0	0	0	0	0
Arson	0	0	0	0	0	0	0	0	0
Simple Assault	0	0	0	0	0	0	0	0	0
Larceny/Theft	0	0	0	0	0	0	0	0	0
Intimidation	0	0	0	0	0	0	0	0	0
Destruction/Damage/Vandalism of Property	0	0	0	0	0	0	0	0	0
HATE CRIMES PUBLIC PROPERTY	2018	Race	Religion	Sexual Orientation	Gender	Gender Identity	Disability	Ethnicity	National Origin
Murder/Non-Negligent Manslaughter	0	0	0	0	0	0	0	0	0
Rape	0	0	0	0	0	0	0	0	0
Fondling	0	0	0	0	0	0	0	0	0
Incest	0	0	0	0	0	0	0	0	0
Statutory Rape	0	0	0	0	0	0	0	0	0
Robbery	0	0	0	0	0	0	0	0	0
Aggravated Assault	0	0	0	0	0	0	0	0	0
Burglary	0	0	0	0	0	0	0	0	0
Motor Vehicle Theft	0	0	0	0	0	0	0	0	0
Arson	0	0	0	0	0	0	0	0	0
Simple Assault	0	0	0	0	0	0	0	0	0
Larceny/Theft	0	0	0	0	0	0	0	0	0
Intimidation	0	0	0	0	0	0	0	0	0
Destruction/Damage/Vandalism of Property	0	0	0	0	0	0	0	0	0
HATE CRIMES ON CAMPUS	2017	Race	Religion	Sexual Orientation	Gender	Gender Identity	Disability	Ethnicity	National Origin
Murder/Non-Negligent Manslaughter	0	0	0	0	0	0	0	0	0
Rape	0	0	0	0	0	0	0	0	0
Fondling	0	0	0	0	0	0	0	0	0
Incest	0	0	0	0	0	0	0	0	0
Statutory Rape	0	0	0	0	0	0	0	0	0
Robbery	0	0	0	0	0	0	0	0	0
Aggravated Assault	0	0	0	0	0	0	0	0	0
Burglary	0	0	0	0	0	0	0	0	0
Motor Vehicle Theft	0	0	0	0	0	0	0	0	0
Arson	0	0	0	0	0	0	0	0	0
Simple Assault	0	0	0	0	0	0	0	0	0
Larceny/Theft	0	0	0	0	0	0	0	0	0
Intimidation	0	0	0	0	0	0	0	0	0
Destruction/Damage/Vandalism of Property	0	0	0	0	0	0	0	0	0

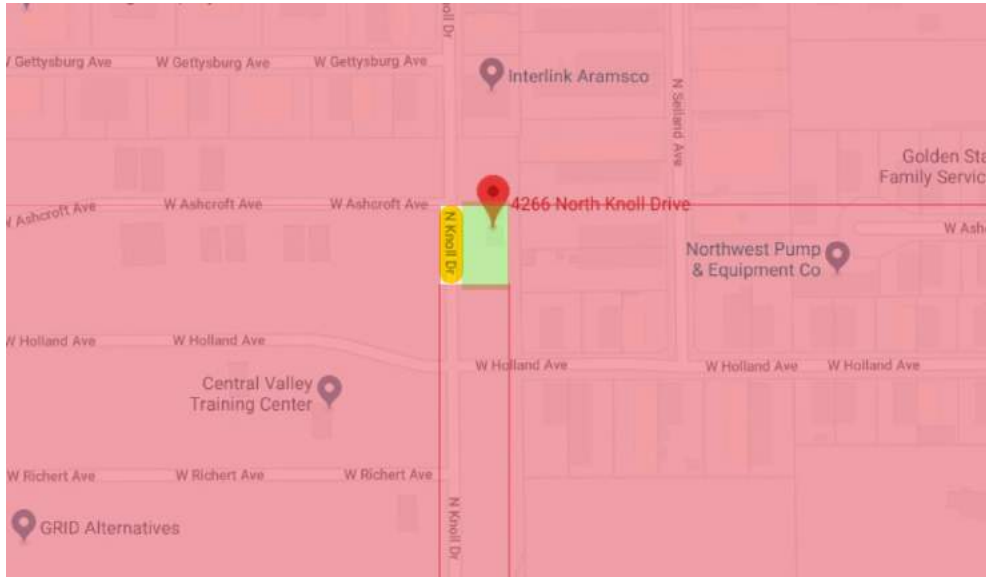
HATE CRIMES NONCAMPUS	2017	Race	Religion	Sexual Orientation	Gender	Gender Identity	Disability	Ethnicity	National Origin
Murder/Non-Negligent Manslaughter	0	0	0	0	0	0	0	0	0
Rape	0	0	0	0	0	0	0	0	0
Fondling	0	0	0	0	0	0	0	0	0
Incest	0	0	0	0	0	0	0	0	0
Statutory Rape	0	0	0	0	0	0	0	0	0
Robbery	0	0	0	0	0	0	0	0	0
Aggravated Assault	0	0	0	0	0	0	0	0	0
Burglary	0	0	0	0	0	0	0	0	0
HATE CRIMES NONCAMPUS CONTINUED	2017	Race	Religion	Sexual Orientation	Gender	Gender Identity	Disability	Ethnicity	National Origin
Motor Vehicle Theft	0	0	0	0	0	0	0	0	0
Arson	0	0	0	0	0	0	0	0	0
Simple Assault	0	0	0	0	0	0	0	0	0
Larceny/Theft	0	0	0	0	0	0	0	0	0
Intimidation	0	0	0	0	0	0	0	0	0
Destruction/Damage/Vandalism of Property	0	0	0	0	0	0	0	0	0
HATE CRIMES PUBLIC PROPERTY	2017	Race	Religion	Sexual Orientation	Gender	Gender Identity	Disability	Ethnicity	National Origin
Murder/Non-Negligent Manslaughter	0	0	0	0	0	0	0	0	0
Rape	0	0	0	0	0	0	0	0	0
Fondling	0	0	0	0	0	0	0	0	0
Incest	0	0	0	0	0	0	0	0	0
Statutory Rape	0	0	0	0	0	0	0	0	0
Robbery	0	0	0	0	0	0	0	0	0
Aggravated Assault	0	0	0	0	0	0	0	0	0
Burglary	0	0	0	0	0	0	0	0	0
Motor Vehicle Theft	0	0	0	0	0	0	0	0	0
Arson	0	0	0	0	0	0	0	0	0
Simple Assault	0	0	0	0	0	0	0	0	0
Larceny/Theft	0	0	0	0	0	0	0	0	0
Intimidation	0	0	0	0	0	0	0	0	0
Destruction/Damage/Vandalism of Property	0	0	0	0	0	0	0	0	0
HATE CRIMES ON CAMPUS	2016	Race	Religion	Sexual Orientation	Gender	Gender Identity	Disability	Ethnicity	National Origin
Murder/Non-Negligent Manslaughter	0	0	0	0	0	0	0	0	0
Rape	0	0	0	0	0	0	0	0	0
Fondling	0	0	0	0	0	0	0	0	0
Incest	0	0	0	0	0	0	0	0	0
Statutory Rape	0	0	0	0	0	0	0	0	0
Robbery	0	0	0	0	0	0	0	0	0
Aggravated Assault	0	0	0	0	0	0	0	0	0
Burglary	0	0	0	0	0	0	0	0	0
Motor Vehicle Theft	0	0	0	0	0	0	0	0	0

HATE CRIMES ONCAMPUS CON TINUED	2016	Race	Religion	Sexual Orientation	Gender	Gender Identity	Disability	Ethnicity	National Origin
Arson	0	0	0	0	0	0	0	0	0
Simple Assault	0	0	0	0	0	0	0	0	0
Larceny/Theft	0	0	0	0	0	0	0	0	0
Intimidation	0	0	0	0	0	0	0	0	0
Destruction/Damage/Vandalism of Property	0	0	0	0	0	0	0	0	0
HATE CRIMES NONCAMPUS	2016	Race	Religion	Sexual Orientation	Gender	Gender Identity	Disability	Ethnicity	National Origin
Murder/Non-Negligent Manslaughter	0	0	0	0	0	0	0	0	0
Rape	0	0	0	0	0	0	0	0	0
Fondling	0	0	0	0	0	0	0	0	0
Incest	0	0	0	0	0	0	0	0	0
Statutory Rape	0	0	0	0	0	0	0	0	0
Robbery	0	0	0	0	0	0	0	0	0
Aggravated Assault	0	0	0	0	0	0	0	0	0
Burglary	0	0	0	0	0	0	0	0	0
Motor Vehicle Theft	0	0	0	0	0	0	0	0	0
Arson	0	0	0	0	0	0	0	0	0
Simple Assault	0	0	0	0	0	0	0	0	0
Larceny/Theft	0	0	0	0	0	0	0	0	0
Intimidation	0	0	0	0	0	0	0	0	0
Destruction/Damage/Vandalism of Property	0	0	0	0	0	0	0	0	0
HATE CRIMES PUBLIC PROPERTY	2016	Race	Religion	Sexual Orientation	Gender	Gender Identity	Disability	Ethnicity	National Origin
Murder/Non-Negligent Manslaughter	0	0	0	0	0	0	0	0	0
Rape	0	0	0	0	0	0	0	0	0
Fondling	0	0	0	0	0	0	0	0	0
Incest	0	0	0	0	0	0	0	0	0
Statutory Rape	0	0	0	0	0	0	0	0	0
Robbery	0	0	0	0	0	0	0	0	0
Aggravated Assault	0	0	0	0	0	0	0	0	0
Burglary	0	0	0	0	0	0	0	0	0
Motor Vehicle Theft	0	0	0	0	0	0	0	0	0
Arson	0	0	0	0	0	0	0	0	0
Simple Assault	0	0	0	0	0	0	0	0	0
Larceny/Theft	0	0	0	0	0	0	0	0	0
Intimidation	0	0	0	0	0	0	0	0	0
Destruction/Damage/Vandalism of Property	0	0	0	0	0	0	0	0	0
VAWA OFFENSES	On Campus			Noncampus			Public Property		
	2016	2017	2018	2016	2017	2018	2016	2017	2018
Domestic Violence	0	0	0	0	0	0	0	0	0
Dating Violence	0	0	0	0	0	0	0	0	0
Stalking	0	0	0	0	0	0	0	0	0

ARREST	On Campus			Noncampus			Public Property		
	2016	2017	2018	2016	2017	2018	2016	2017	2018
Weapons: Carrying, Possessing, etc.	0	0	0	0	0	0	0	0	0
Drug Abuse Violation	0	0	0	0	0	0	0	0	0
Liquor Law Violations	0	0	0	0	0	0	0	0	0
DISCIPLINARY ACTIONS	On Campus			Noncampus			Public Property		
	2016	2017	2018	2016	2017	2018	2016	2017	2018
Weapons: Carrying, Possessing, etc.	0	0	0	0	0	0	0	0	0
Drug Abuse Violation	0	0	0	0	0	0	0	0	0
Liquor Law Violations	0	0	0	0	0	0	0	0	0
UNFOUNDED CRIMES	2016			2017			2018		
	0			0			0		

NORTH AVE CAMPUS CLERY MAP (GEOGRAPHY)

The preceding crime statistic tables reflect the mandatory reporting offenses as specified in the Jeanne Clery Act. The tables display crime data over the past three calendar years and are separated by crimes occurring in four different geographical locations: 1. On Campus – the main core campus 2. Non-Campus - crimes occurring off of campus property, and 3. Public Property - crimes occurring on the borders of the Campus.



- Public Property
- On Campus
- NonCampus

MERCED CAMPUS CRIME STATISTICS

The following criminal offenses occurred during the calendar years listed.

CRIMINAL OFFENSES	On Campus			Noncampus			Public Property		
	2016	2017	2018	2016	2017	2018	2016	2017	2018
Murder/Non-Negligent Manslaughter	0	0	0	0	0	0	0	0	0
Manslaughter by Negligence	0	0	0	0	0	0	0	0	0
Rape	0	0	0	0	0	0	0	0	0
Fondling	0	0	0	0	0	0	0	0	0
Incest	0	0	0	0	0	0	0	0	0
Statutory Rape	0	0	0	0	0	0	0	0	0
Robbery	0	0	0	0	0	0	0	0	0
Aggravated Assault	0	0	0	0	0	0	0	0	0
Burglary	0	0	0	0	0	0	0	0	0
Motor Vehicle Theft	0	0	0	0	0	0	0	0	0
Arson	0	0	0	0	0	0	0	0	0
HATE CRIMES ON CAMPUS	2018	Race	Religion	Sexual Orientation	Gender	Gender Identity	Disability	Ethnicity	National Origin
Murder/Non-Negligent Manslaughter	0	0	0	0	0	0	0	0	0
Rape	0	0	0	0	0	0	0	0	0
Fondling	0	0	0	0	0	0	0	0	0
Incest	0	0	0	0	0	0	0	0	0
Statutory Rape	0	0	0	0	0	0	0	0	0
Robbery	0	0	0	0	0	0	0	0	0
Aggravated Assault	0	0	0	0	0	0	0	0	0
Burglary	0	0	0	0	0	0	0	0	0
Motor Vehicle Theft	0	0	0	0	0	0	0	0	0
Arson	0	0	0	0	0	0	0	0	0
Simple Assault	0	0	0	0	0	0	0	0	0
Larceny/Theft	0	0	0	0	0	0	0	0	0
Intimidation	0	0	0	0	0	0	0	0	0
Destruction/Damage/Vandalism of Property	0	0	0	0	0	0	0	0	0
HATE CRIMES NONCAMPUS	2018	Race	Religion	Sexual Orientation	Gender	Gender Identity	Disability	Ethnicity	National Origin
Murder/Non-Negligent Manslaughter	0	0	0	0	0	0	0	0	0
Rape	0	0	0	0	0	0	0	0	0
Fondling	0	0	0	0	0	0	0	0	0
Incest	0	0	0	0	0	0	0	0	0
Statutory Rape	0	0	0	0	0	0	0	0	0
Robbery	0	0	0	0	0	0	0	0	0
Aggravated Assault	0	0	0	0	0	0	0	0	0
Burglary	0	0	0	0	0	0	0	0	0

HATE CRIMES NONCAMPUS CONTINUED	2018	Race	Religion	Sexual Orientation	Gender	Gender Identity	Disability	Ethnicity	National Origin
Motor Vehicle Theft	0	0	0	0	0	0	0	0	0
Arson	0	0	0	0	0	0	0	0	0
Simple Assault	0	0	0	0	0	0	0	0	0
Larceny/Theft	0	0	0	0	0	0	0	0	0
Intimidation	0	0	0	0	0	0	0	0	0
Destruction/Damage/Vandalism of Property	0	0	0	0	0	0	0	0	0
HATE CRIMES PUBLIC PROPERTY	2018	Race	Religion	Sexual Orientation	Gender	Gender Identity	Disability	Ethnicity	National Origin
Murder/Non-Negligent Manslaughter	0	0	0	0	0	0	0	0	0
Rape	0	0	0	0	0	0	0	0	0
Fondling	0	0	0	0	0	0	0	0	0
Incest	0	0	0	0	0	0	0	0	0
Statutory Rape	0	0	0	0	0	0	0	0	0
Robbery	0	0	0	0	0	0	0	0	0
Aggravated Assault	0	0	0	0	0	0	0	0	0
Burglary	0	0	0	0	0	0	0	0	0
Motor Vehicle Theft	0	0	0	0	0	0	0	0	0
Arson	0	0	0	0	0	0	0	0	0
Simple Assault	0	0	0	0	0	0	0	0	0
Larceny/Theft	0	0	0	0	0	0	0	0	0
Intimidation	0	0	0	0	0	0	0	0	0
Destruction/Damage/Vandalism of Property	0	0	0	0	0	0	0	0	0
HATE CRIMES ON CAMPUS	2017	Race	Religion	Sexual Orientation	Gender	Gender Identity	Disability	Ethnicity	National Origin
Murder/Non-Negligent Manslaughter	0	0	0	0	0	0	0	0	0
Rape	0	0	0	0	0	0	0	0	0
Fondling	0	0	0	0	0	0	0	0	0
Incest	0	0	0	0	0	0	0	0	0
Statutory Rape	0	0	0	0	0	0	0	0	0
Robbery	0	0	0	0	0	0	0	0	0
Aggravated Assault	0	0	0	0	0	0	0	0	0
Burglary	0	0	0	0	0	0	0	0	0
Motor Vehicle Theft	0	0	0	0	0	0	0	0	0
Arson	0	0	0	0	0	0	0	0	0
Simple Assault	0	0	0	0	0	0	0	0	0
Larceny/Theft	0	0	0	0	0	0	0	0	0
Intimidation	0	0	0	0	0	0	0	0	0
Destruction/Damage/Vandalism of Property	0	0	0	0	0	0	0	0	0

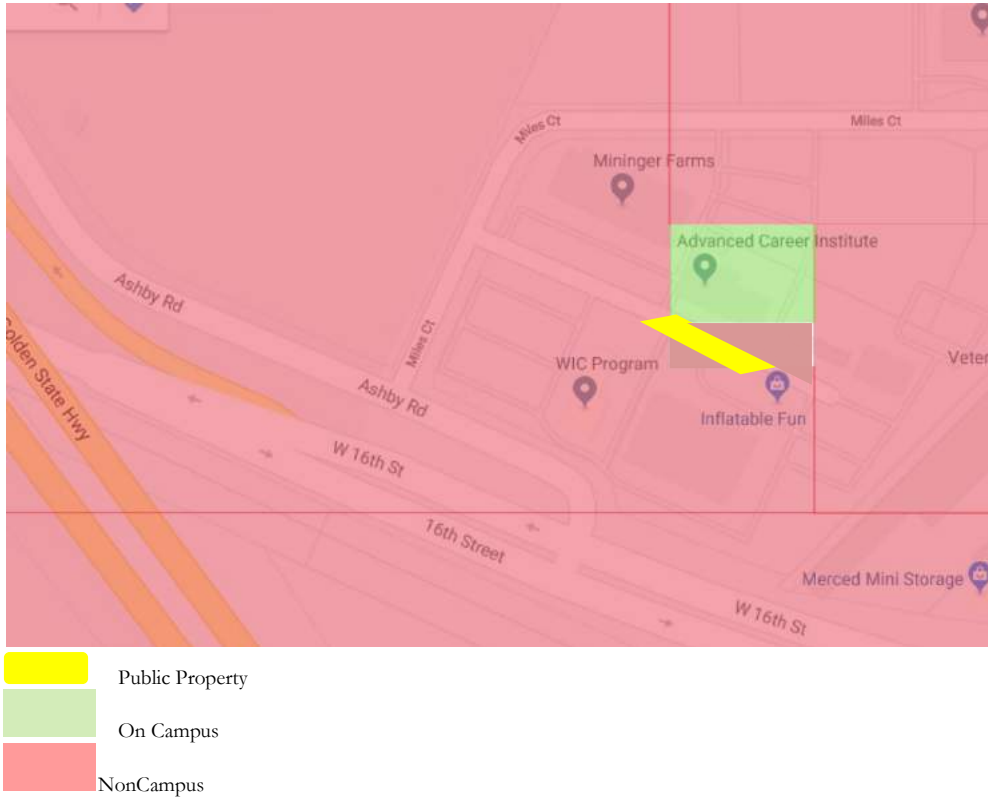
HATE CRIMES NONCAMPUS	2017	Race	Religion	Sexual Orientation	Gender	Gender Identity	Disability	Ethnicity	National Origin
Murder/Non-Negligent Manslaughter	0	0	0	0	0	0	0	0	0
Rape	0	0	0	0	0	0	0	0	0
Fondling	0	0	0	0	0	0	0	0	0
Incest	0	0	0	0	0	0	0	0	0
Statutory Rape	0	0	0	0	0	0	0	0	0
Robbery	0	0	0	0	0	0	0	0	0
Aggravated Assault	0	0	0	0	0	0	0	0	0
Burglary	0	0	0	0	0	0	0	0	0
HATE CRIMES NONCAMPUS CONTINUED	2017	Race	Religion	Sexual Orientation	Gender	Gender Identity	Disability	Ethnicity	National Origin
Motor Vehicle Theft	0	0	0	0	0	0	0	0	0
Arson	0	0	0	0	0	0	0	0	0
Simple Assault	0	0	0	0	0	0	0	0	0
Larceny/Theft	0	0	0	0	0	0	0	0	0
Intimidation	0	0	0	0	0	0	0	0	0
Destruction/Damage/Vandalism of Property	0	0	0	0	0	0	0	0	0
HATE CRIMES PUBLIC PROPERTY	2017	Race	Religion	Sexual Orientation	Gender	Gender Identity	Disability	Ethnicity	National Origin
Murder/Non-Negligent Manslaughter	0	0	0	0	0	0	0	0	0
Rape	0	0	0	0	0	0	0	0	0
Fondling	0	0	0	0	0	0	0	0	0
Incest	0	0	0	0	0	0	0	0	0
Statutory Rape	0	0	0	0	0	0	0	0	0
Robbery	0	0	0	0	0	0	0	0	0
Aggravated Assault	0	0	0	0	0	0	0	0	0
Burglary	0	0	0	0	0	0	0	0	0
Motor Vehicle Theft	0	0	0	0	0	0	0	0	0
Arson	0	0	0	0	0	0	0	0	0
Simple Assault	0	0	0	0	0	0	0	0	0
Larceny/Theft	0	0	0	0	0	0	0	0	0
Intimidation	0	0	0	0	0	0	0	0	0
Destruction/Damage/Vandalism of Property	0	0	0	0	0	0	0	0	0
HATE CRIMES ON CAMPUS	2016	Race	Religion	Sexual Orientation	Gender	Gender Identity	Disability	Ethnicity	National Origin
Murder/Non-Negligent Manslaughter	0	0	0	0	0	0	0	0	0
Rape	0	0	0	0	0	0	0	0	0
Fondling	0	0	0	0	0	0	0	0	0
Incest	0	0	0	0	0	0	0	0	0
Statutory Rape	0	0	0	0	0	0	0	0	0
Robbery	0	0	0	0	0	0	0	0	0
Aggravated Assault	0	0	0	0	0	0	0	0	0
Burglary	0	0	0	0	0	0	0	0	0
Motor Vehicle Theft	0	0	0	0	0	0	0	0	0

HATE CRIMES ONCAMPUS CON TINUED	2016	Race	Religion	Sexual Orientation	Gender	Gender Identity	Disability	Ethnicity	National Origin
Arson	0	0	0	0	0	0	0	0	0
Simple Assault	0	0	0	0	0	0	0	0	0
Larceny/Theft	0	0	0	0	0	0	0	0	0
Intimidation	0	0	0	0	0	0	0	0	0
Destruction/Damage/Vandalism of Property	0	0	0	0	0	0	0	0	0
HATE CRIMES NONCAMPUS	2016	Race	Religion	Sexual Orientation	Gender	Gender Identity	Disability	Ethnicity	National Origin
Murder/Non-Negligent Manslaughter	0	0	0	0	0	0	0	0	0
Rape	0	0	0	0	0	0	0	0	0
Fondling	0	0	0	0	0	0	0	0	0
Incest	0	0	0	0	0	0	0	0	0
Statutory Rape	0	0	0	0	0	0	0	0	0
Robbery	0	0	0	0	0	0	0	0	0
Aggravated Assault	0	0	0	0	0	0	0	0	0
Burglary	0	0	0	0	0	0	0	0	0
Motor Vehicle Theft	0	0	0	0	0	0	0	0	0
Arson	0	0	0	0	0	0	0	0	0
Simple Assault	0	0	0	0	0	0	0	0	0
Larceny/Theft	0	0	0	0	0	0	0	0	0
Intimidation	0	0	0	0	0	0	0	0	0
Destruction/Damage/Vandalism of Property	0	0	0	0	0	0	0	0	0
HATE CRIMES PUBLIC PROPERTY	2016	Race	Religion	Sexual Orientation	Gender	Gender Identity	Disability	Ethnicity	National Origin
Murder/Non-Negligent Manslaughter	0	0	0	0	0	0	0	0	0
Rape	0	0	0	0	0	0	0	0	0
Fondling	0	0	0	0	0	0	0	0	0
Incest	0	0	0	0	0	0	0	0	0
Statutory Rape	0	0	0	0	0	0	0	0	0
Robbery	0	0	0	0	0	0	0	0	0
Aggravated Assault	0	0	0	0	0	0	0	0	0
Burglary	0	0	0	0	0	0	0	0	0
Motor Vehicle Theft	0	0	0	0	0	0	0	0	0
Arson	0	0	0	0	0	0	0	0	0
Simple Assault	0	0	0	0	0	0	0	0	0
Larceny/Theft	0	0	0	0	0	0	0	0	0
Intimidation	0	0	0	0	0	0	0	0	0
Destruction/Damage/Vandalism of Property	0	0	0	0	0	0	0	0	0
VAWA OFFENSES	On Campus			Noncampus			Public Property		
	2016	2017	2018	2016	2017	2018	2016	2017	2018
Domestic Violence	0	0	0	0	0	0	0	0	0
Dating Violence	0	0	0	0	0	0	0	0	0
Stalking	0	0	0	0	0	0	0	0	0

ARREST	On Campus			Noncampus			Public Property		
	2016	2017	2018	2016	2017	2018	2016	2017	2018
Weapons: Carrying, Possessing, etc.	0	0	0	0	0	0	0	0	0
Drug Abuse Violation	0	0	0	0	0	0	0	0	0
Liquor Law Violations	0	0	0	0	0	0	0	0	0
DISCIPLINARY ACTIONS	On Campus			Noncampus			Public Property		
	2016	2017	2018	2016	2017	2018	2016	2017	2018
Weapons: Carrying, Possessing, etc.	0	0	0	0	0	0	0	0	0
Drug Abuse Violation	0	0	0	0	0	0	0	0	0
Liquor Law Violations	0	0	0	0	0	0	0	0	0
UNFOUNDED CRIMES	2016			2017			2018		
	0			0			0		

MERCED CAMPUS CLERY MAP (GEOGRAPHY)

The preceding crime statistic tables reflect the mandatory reporting offenses as specified in the Jeanne Clery Act. The tables display crime data over the past three calendar years and are separated by crimes occurring in four different geographical locations: 1. On Campus – the main core campus 2. Non-Campus - crimes occurring off of campus property, and 3. Public Property - crimes occurring on the borders of the Campus.



BAKERSFIELD CAMPUS CRIME STATISTICS

The following criminal offenses occurred during the calendar years listed.

CRIMINAL OFFENSES	On Campus			Noncampus			Public Property		
	2016	2017	2018	2016	2017	2018	2016	2017	2018
Murder/Non-Negligent Manslaughter	-	-	0	-	-	0	-	-	0
Manslaughter by Negligence	-	-	0	-	-	0	-	-	0
Rape	-	-	0	-	-	0	-	-	0
Fondling	-	-	0	-	-	0	-	-	0
Incest	-	-	0	-	-	0	-	-	0
Statutory Rape	-	-	0	-	-	0	-	-	0
Robbery	-	-	0	-	-	0	-	-	0
Aggravated Assault	-	-	0	-	-	0	-	-	0
Burglary	-	-	0	-	-	0	-	-	0
Motor Vehicle Theft	-	-	0	-	-	0	-	-	0
Arson	-	-	0	-	-	0	-	-	0
HATE CRIMES ON CAMPUS	2018	Race	Religion	Sexual Orientation	Gender	Gender Identity	Disability	Ethnicity	National Origin
Murder/Non-Negligent Manslaughter	0	0	0	0	0	0	0	0	0
Rape	0	0	0	0	0	0	0	0	0
Fondling	0	0	0	0	0	0	0	0	0
Incest	0	0	0	0	0	0	0	0	0
Statutory Rape	0	0	0	0	0	0	0	0	0
Robbery	0	0	0	0	0	0	0	0	0
Aggravated Assault	0	0	0	0	0	0	0	0	0
Burglary	0	0	0	0	0	0	0	0	0
Motor Vehicle Theft	0	0	0	0	0	0	0	0	0
Arson	0	0	0	0	0	0	0	0	0
Simple Assault	0	0	0	0	0	0	0	0	0
Larceny/Theft	0	0	0	0	0	0	0	0	0
Intimidation	0	0	0	0	0	0	0	0	0
Destruction/Damage/Vandalism of Property	0	0	0	0	0	0	0	0	0
HATE CRIMES NONCAMPUS	2018	Race	Religion	Sexual Orientation	Gender	Gender Identity	Disability	Ethnicity	National Origin
Murder/Non-Negligent Manslaughter	0	0	0	0	0	0	0	0	0
Rape	0	0	0	0	0	0	0	0	0
Fondling	0	0	0	0	0	0	0	0	0
Incest	0	0	0	0	0	0	0	0	0
Statutory Rape	0	0	0	0	0	0	0	0	0
Robbery	0	0	0	0	0	0	0	0	0
Aggravated Assault	0	0	0	0	0	0	0	0	0
Burglary	0	0	0	0	0	0	0	0	0

HATE CRIMES NONCAMPUS CONTINUED	2018	Race	Religion	Sexual Orientation	Gender	Gender Identity	Disability	Ethnicity	National Origin
Motor Vehicle Theft	0	0	0	0	0	0	0	0	0
Arson	0	0	0	0	0	0	0	0	0
Simple Assault	0	0	0	0	0	0	0	0	0
Larceny/Theft	0	0	0	0	0	0	0	0	0
Intimidation	0	0	0	0	0	0	0	0	0
Destruction/Damage/Vandalism of Property	0	0	0	0	0	0	0	0	0
HATE CRIMES PUBLIC PROPERTY	2018	Race	Religion	Sexual Orientation	Gender	Gender Identity	Disability	Ethnicity	National Origin
Murder/Non-Negligent Manslaughter	0	0	0	0	0	0	0	0	0
Rape	0	0	0	0	0	0	0	0	0
Fondling	0	0	0	0	0	0	0	0	0
Incest	0	0	0	0	0	0	0	0	0
Statutory Rape	0	0	0	0	0	0	0	0	0
Robbery	0	0	0	0	0	0	0	0	0
Aggravated Assault	0	0	0	0	0	0	0	0	0
Burglary	0	0	0	0	0	0	0	0	0
Motor Vehicle Theft	0	0	0	0	0	0	0	0	0
Arson	0	0	0	0	0	0	0	0	0
Simple Assault	0	0	0	0	0	0	0	0	0
Larceny/Theft	0	0	0	0	0	0	0	0	0
Intimidation	0	0	0	0	0	0	0	0	0
Destruction/Damage/Vandalism of Property	0	0	0	0	0	0	0	0	0
HATE CRIMES ON CAMPUS	2017	Race	Religion	Sexual Orientation	Gender	Gender Identity	Disability	Ethnicity	National Origin
Murder/Non-Negligent Manslaughter	-	-	-	-	-	-	-	-	-
Rape	-	-	-	-	-	-	-	-	-
Fondling	-	-	-	-	-	-	-	-	-
Incest	-	-	-	-	-	-	-	-	-
Statutory Rape	-	-	-	-	-	-	-	-	-
Robbery	-	-	-	-	-	-	-	-	-
Aggravated Assault	-	-	-	-	-	-	-	-	-
Burglary	-	-	-	-	-	-	-	-	-
Motor Vehicle Theft	-	-	-	-	-	-	-	-	-
Arson	-	-	-	-	-	-	-	-	-
Simple Assault	-	-	-	-	-	-	-	-	-
Larceny/Theft	-	-	-	-	-	-	-	-	-
Intimidation	-	-	-	-	-	-	-	-	-
Destruction/Damage/Vandalism of Property	-	-	-	-	-	-	-	-	-

HATE CRIMES NONCAMPUS	2017	Race	Religion	Sexual Orientation	Gender	Gender Identity	Disability	Ethnicity	National Origin
Murder/Non-Negligent Manslaughter	-	-	-	-	-	-	-	-	-
Rape	-	-	-	-	-	-	-	-	-
Fondling	-	-	-	-	-	-	-	-	-
Incest	-	-	-	-	-	-	-	-	-
Statutory Rape	-	-	-	-	-	-	-	-	-
Robbery	-	-	-	-	-	-	-	-	-
Aggravated Assault	-	-	-	-	-	-	-	-	-
Burglary	-	-	-	-	-	-	-	-	-
HATE CRIMES NONCAMPUS CONTINUED	2017	Race	Religion	Sexual Orientation	Gender	Gender Identity	Disability	Ethnicity	National Origin
Motor Vehicle Theft	-	-	-	-	-	-	-	-	-
Arson	-	-	-	-	-	-	-	-	-
Simple Assault	-	-	-	-	-	-	-	-	-
Larceny/Theft	-	-	-	-	-	-	-	-	-
Intimidation	-	-	-	-	-	-	-	-	-
Destruction/Damage/Vandalism of Property	-	-	-	-	-	-	-	-	-
HATE CRIMES PUBLIC PROPERTY	2017	Race	Religion	Sexual Orientation	Gender	Gender Identity	Disability	Ethnicity	National Origin
Murder/Non-Negligent Manslaughter	-	-	-	-	-	-	-	-	-
Rape	-	-	-	-	-	-	-	-	-
Fondling	-	-	-	-	-	-	-	-	-
Incest	-	-	-	-	-	-	-	-	-
Statutory Rape	-	-	-	-	-	-	-	-	-
Robbery	-	-	-	-	-	-	-	-	-
Aggravated Assault	-	-	-	-	-	-	-	-	-
Burglary	-	-	-	-	-	-	-	-	-
Motor Vehicle Theft	-	-	-	-	-	-	-	-	-
Arson	-	-	-	-	-	-	-	-	-
Simple Assault	-	-	-	-	-	-	-	-	-
Larceny/Theft	-	-	-	-	-	-	-	-	-
Intimidation	-	-	-	-	-	-	-	-	-
Destruction/Damage/Vandalism of Property	-	-	-	-	-	-	-	-	-
HATE CRIMES ON CAMPUS	2016	Race	Religion	Sexual Orientation	Gender	Gender Identity	Disability	Ethnicity	National Origin
Murder/Non-Negligent Manslaughter	-	-	-	-	-	-	-	-	-
Rape	-	-	-	-	-	-	-	-	-
Fondling	-	-	-	-	-	-	-	-	-
Incest	-	-	-	-	-	-	-	-	-
Statutory Rape	-	-	-	-	-	-	-	-	-
Robbery	-	-	-	-	-	-	-	-	-
Aggravated Assault	-	-	-	-	-	-	-	-	-
Burglary	-	-	-	-	-	-	-	-	-
Motor Vehicle Theft	-	-	-	-	-	-	-	-	-

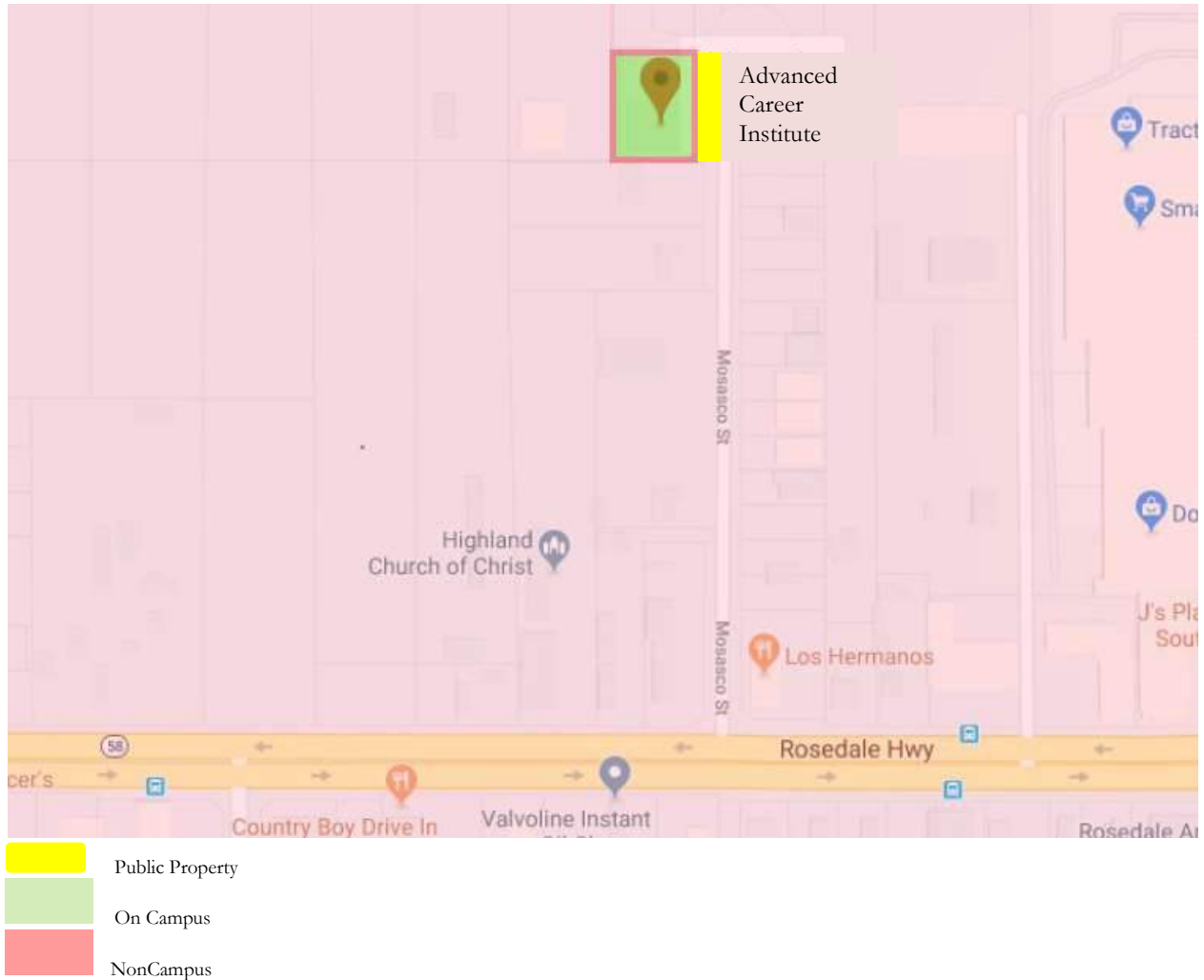
HATE CRIMES ONCAMPUS CON TINUED	2016	Race	Religion	Sexual Orientation	Gender	Gender Identity	Disability	Ethnicity	National Origin
Arson	-	-	-	-	-	-	-	-	-
Simple Assault	-	-	-	-	-	-	-	-	-
Larceny/Theft	-	-	-	-	-	-	-	-	-
Intimidation	-	-	-	-	-	-	-	-	-
Destruction/Damage/Vandalism of Property	-	-	-	-	-	-	-	-	-
HATE CRIMES NONCAMPUS	2016	Race	Religion	Sexual Orientation	Gender	Gender Identity	Disability	Ethnicity	National Origin
Murder/Non-Negligent Manslaughter	-	-	-	-	-	-	-	-	-
Rape	-	-	-	-	-	-	-	-	-
Fondling	-	-	-	-	-	-	-	-	-
Incest	-	-	-	-	-	-	-	-	-
Statutory Rape	-	-	-	-	-	-	-	-	-
Robbery	-	-	-	-	-	-	-	-	-
Aggravated Assault	-	-	-	-	-	-	-	-	-
Burglary	-	-	-	-	-	-	-	-	-
Motor Vehicle Theft	-	-	-	-	-	-	-	-	-
Arson	-	-	-	-	-	-	-	-	-
Simple Assault	-	-	-	-	-	-	-	-	-
Larceny/Theft	-	-	-	-	-	-	-	-	-
Intimidation	-	-	-	-	-	-	-	-	-
Destruction/Damage/Vandalism of Property	-	-	-	-	-	-	-	-	-
HATE CRIMES PUBLIC PROPERTY	2016	Race	Religion	Sexual Orientation	Gender	Gender Identity	Disability	Ethnicity	National Origin
Murder/Non-Negligent Manslaughter	-	-	-	-	-	-	-	-	-
Rape	-	-	-	-	-	-	-	-	-
Fondling	-	-	-	-	-	-	-	-	-
Incest	-	-	-	-	-	-	-	-	-
Statutory Rape	-	-	-	-	-	-	-	-	-
Robbery	-	-	-	-	-	-	-	-	-
Aggravated Assault	-	-	-	-	-	-	-	-	-
Burglary	-	-	-	-	-	-	-	-	-
Motor Vehicle Theft	-	-	-	-	-	-	-	-	-
Arson	-	-	-	-	-	-	-	-	-
Simple Assault	-	-	-	-	-	-	-	-	-
Larceny/Theft	-	-	-	-	-	-	-	-	-
Intimidation	-	-	-	-	-	-	-	-	-
Destruction/Damage/Vandalism of Property	-	-	-	-	-	-	-	-	-
VAWA OFFENSES	On Campus			Noncampus			Public Property		
	2016	2017	2018	2016	2017	2018	2016	2017	2018
Domestic Violence	-	-	0	-	-	0	-	-	0
Dating Violence	-	-	0	-	-	0	-	-	0
Stalking	-	-	0	-	-	0	-	-	0

ARREST	On Campus			Noncampus			Public Property		
	2016	2017	2018	2016	2017	2018	2016	2017	2018
Weapons: Carrying, Possessing, etc.	-	-	0	-	-	0	-	-	0
Drug Abuse Violation	-	-	0	-	-	0	-	-	0
Liquor Law Violations	-	-	0	-	-	0	-	-	0
DISCIPLINARY ACTIONS	On Campus			Noncampus			Public Property		
	2016	2017	2018	2016	2017	2018	2016	2017	2018
Weapons: Carrying, Possessing, etc.	-	-	0	-	-	0	-	-	0
Drug Abuse Violation	-	-	0	-	-	0	-	-	0
Liquor Law Violations	-	-	0	-	-	0	-	-	0
UNFOUNDED CRIMES	2016			2017			2018		
	-			-			0		

- These crime statistics were not available prior to 2018. The Bakersfield Campus is a new campus opened in July 2018 and will not have a full year of data available until 2019.

BAKERSFIELD CAMPUS CLERY MAP (GEOGRAPHY)

The preceding crime statistic tables reflect the mandatory reporting offenses as specified in the Jeanne Clery Act. The tables display crime data over the past three calendar years and are separated by crimes occurring in four different geographical locations: 1. On Campus – the main core campus 2. Non-Campus - crimes occurring off of campus property, and 3. Public Property - crimes occurring on the borders of the Campus.



DEFINITIONS

Consent: The term “consent” means a willingness to participate in a mutually agreed upon sexual activity indicated by words and/or actions which are informed, freely and actively given, and mutually understood.

Sexual Assault: An offense classified as a forcible or non-forcible sex offense under the uniform crime reporting system of the Federal Bureau of Investigation. In Pennsylvania, sexual assault is defined by Title 18 as a person engaging in sexual intercourse or deviate sexual intercourse with a complainant without the complainants consent.

Rape: The penetration, no matter how slight, of the vagina or anus with any body part or object, or oral penetration by a sex organ of another person, without consent of the victim. Rape also occurs when a person engages in sexual intercourse with a person by forcible compulsion or the threat of forcible compulsion that would prevent resistance by a person of reasonable resolution, or when a person is unconscious or where the person knows that the victim is unaware that the act is occurring. This definition includes any gender of victim or perpetrator

Dating Violence: Violence by a person who is or has been in a social relationship of a romantic or intimate nature with the victim; and where the existence of such a relationship shall be determined based on a consideration of the length and type of relationship; and the frequency of interaction between the persons involved in the relationship. Dating violence is currently not specifically defined by Pennsylvania State statute.

Domestic Violence: A felony or misdemeanor crime of violence committed by a current or former spouse or intimate partner of the victim, by a person with whom the victim shares a child in common, by a person who is cohabitating with or has cohabitated with the victim as a spouse or intimate partner; by a person similarly situated to a spouse of the victim under the domestic or family violence laws of the jurisdiction receiving grant monies (under VAWA), or by any other person against an adult or youth victim who is protected from that person’s acts under the domestic or family violence laws of the jurisdiction. Domestic Violence is currently not specifically defined by Pennsylvania state statute, however family abuse is. Abuse is defined as the occurrence of one or more of the following acts between family or household members, sexual or intimate partners or persons who share biological parenthood:

- (1) Attempting to cause or intentionally, knowingly or recklessly causing bodily injury, serious bodily injury, rape, involuntary deviate sexual intercourse, sexual assault, statutory sexual assault, aggravated indecent assault, indecent assault or incest with or without a deadly weapon.
- (2) Placing another in reasonable fear of imminent serious bodily injury.
- (3) The infliction of false imprisonment pursuant to 18 Pa.C.S. §2903 (relating to false imprisonment).
- (4) Physically or sexually abusing minor children, including such terms as defined in Chapter 63 (relating to child protective services).
- (5) Knowingly engaging in a course of conduct or repeatedly committing acts toward another person, including following the person, without proper authority, under circumstances which place the person in reasonable fear of bodily injury. The definition of this paragraph applies only to proceedings commenced under this title and is inapplicable to any criminal prosecutions commenced under Title 18 (relating to crimes and offenses).

Stalking: Engaging in a course of conduct directed at a specific person that would cause a reasonable person to fear for his or her safety or the safety of others; or to suffer substantial emotional distress. A person commits the crime of stalking when the person either:

- (1) engages in a course of conduct or repeatedly commits acts toward another person, including following the person without proper authority, under circumstances which demonstrate either an intent to place such other person in reasonable fear of bodily injury or to cause substantial emotional distress to such other person; or
- (2) engages in a course of conduct or repeatedly communicates to another person under circumstances which demonstrate or communicate either an intent to place such other person in reasonable fear of bodily injury or to cause substantial emotional distress to such other person.

Hate Crime: A hate crime is a criminal offense committed against a person or property which is motivated, in whole or in part, by the offender's bias. Bias is a performed negative opinion or attitude toward a group of persons based on their race, gender, religion, disability, sexual orientation or ethnicity/national origin.

The school reports all hate crime statistics separately for the categories of criminal offenses listed in the chart above. Additionally, hate crimes statistics are also reported separately for the following offenses:

- **Larceny-theft:** is the unlawful taking, carrying, leading, or riding away of property from the possession or constructive possession of another. Constructive possession is the condition in which a person does not have physical custody or possession but is in a position to exercise dominion or control over a thing.
- **Simple Assault:** is an unlawful physical attack by one person upon another where neither the offender displays a weapon, nor the victim suffers obvious severe or aggravated bodily injury involving apparent broken bones, loss of teeth, possible internal injury, severe laceration, or loss of consciousness.
- **Intimidation:** is to unlawfully place another person in reasonable fear of bodily harm through the use of threatening words and/or other conduct, but without displaying a weapon or subjecting the victim to actual physical attack.
- **Destructive/Damage/Vandalism of Property:** Is to willfully or maliciously destroy, damage, deface or otherwise injury real or personal property without the consent of the owner or the person having custody or control of it.

There were no reported hate crimes for the years 2015, 2016, or 2017

RESIDENTIAL FACILITIES

Advanced Career Institute does not have any school-operated residential facilities for students.